

# Test Jacks 4 mm System

## Type

### KD 10

4mm Insulated Adapter, nickel plated brass, for two 4mm plugs

### KUN 10

4mm Insulated Adapter, tin plated brass jack and screw terminal max 1.5mm<sup>2</sup>

Pin Diameter

4 mm

4 mm

PART NO. / Housing color

● 930109100  
● 930109101

● 930189100  
● 930189101

## Technical Data

Contact Type jack Ø 4 mm  
 Connection Type jack (Ø 4 mm)  
 Voltage Rating 30 VAC / 60 VDC  
 Measurement Category (IEC61010) CAT I  
 Current Rating\* 10 A  
 Contact Resistance 5 mOhm  
 Mounting Type -

### Material Specifications

Jack Body nickel plated brass  
 Contact Spring -  
 Housing PS

### Environmental Conditions

Temperature Range -25°C to +70 °C (-13 to 158°F)

### Flamability Rating

Housing UL 94 HB

jack Ø 4 mm  
 screw terminal max. 1.5mm<sup>2</sup>  
 30 VAC / 60 VDC  
 CAT I  
 16 A  
 3 mOhm  
 -

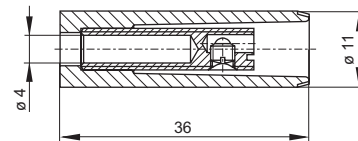
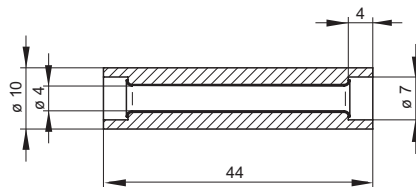
tin plated brass  
 -  
 PS

-25°C to +70 °C (-13 to 158°F)

UL 94 HB

## Drawing

Measurements are shown in millimeters.  
 Multiply by 0.03937 to convert to inches.



\* Please consider derating graph on page 80.