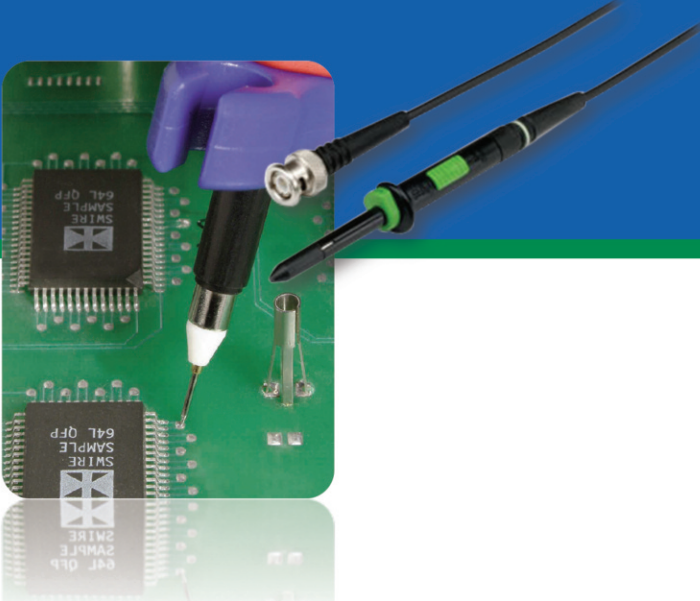


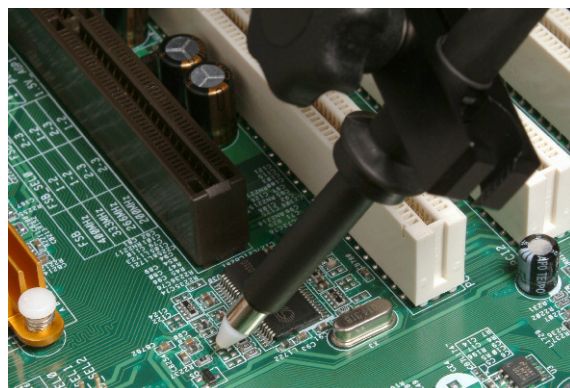
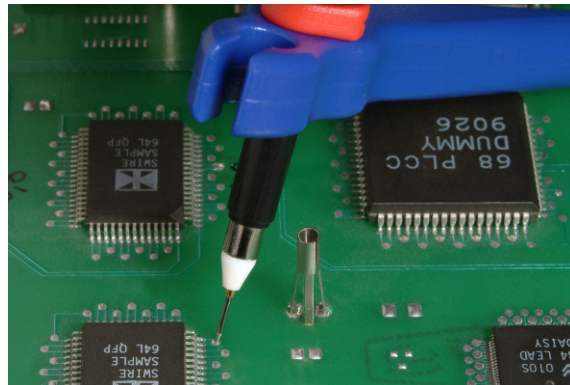
Oscilloscope Test Probes

High Frequency Measurement



Altech High Frequency Test Probes are for direct connection to oscilloscopes. The line consists of a standard 5mm series with adjustable probe ratio and 2.5mm series with fixed 10:1 ratio.

- 10:1 probe ratio
- Exchangable spring tip
- Low Input Capacitance



Type

TKO 5 - PMS 221A

Passive High Impedance Miniature Test Probe with 150 MHz Bandwidth and Probe Ratio 10:1 (Switchable, 20 MHz @ Probe Ratio 1:1). The probe is adjustable for low frequencies.

Features:

- Modular Probe
- Coaxial Design
- Coaxial Reed Switch
- New IC contact system for 0.003" to 0.004" grids
- Interchangeable Spring Contact Tip for reliable Contacting

PART NO.

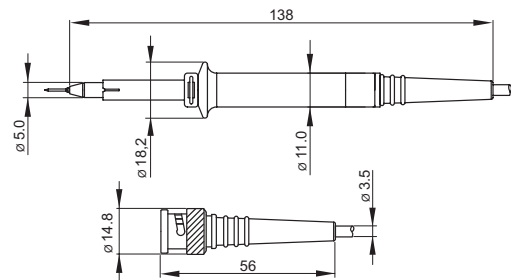
974312000

Technical Data

Probe Ratio	1:1	10:1
Input Resistance	-	10 MΩ
Input Capacitance	78 pF inkl. Oszi.	13 pF
Oscilloscope Input	1 MΩ AC/DC	1 MΩ AC/DC
Probe bandwidth	20 MHz	150 MHz
Risetime	18 nsec	2,4 nsec
Compensation Range		15 ... 40 pF
Measurement category	55 V eff. CAT II	300 V rms CAT II
Pollution degree	2	2
Safety standard	IEC 61010-031	
Cable length	1.2 m (3.94 ft.)	

Drawing

Measurements are shown in millimeters. Multiply by 0.03937 to convert to inches.



Contents



- Test Probe
- Manual
- Ground Lead 0.22m (0.72")
- Spring Tip 0.8mm (0.003")
- Solid Tip CuBe 0.8mm (0.003")
- Ground Blade 5.0mm (0.016")
- Isolation Cover 5.0mm (0.016")
- Protection Cover 5.0mm (0.016")
- IC covers 0.8 to 1.27mm (0.003-0.004")
- Spring Hook 5.0mm (0.016")
- Adjustment Tool T