

Altech introduces a **LARGER RANGE** of Extremely Cost Competitive Terminal Blocks

SCREW CLAMP

Feed Through

- Single Level
- Multi Connection
- Double Level
- Triple Level
- Ground/ Earth

Disconnect & Test

- Slider Style
- Blade Style
- Lever Style

Fuse

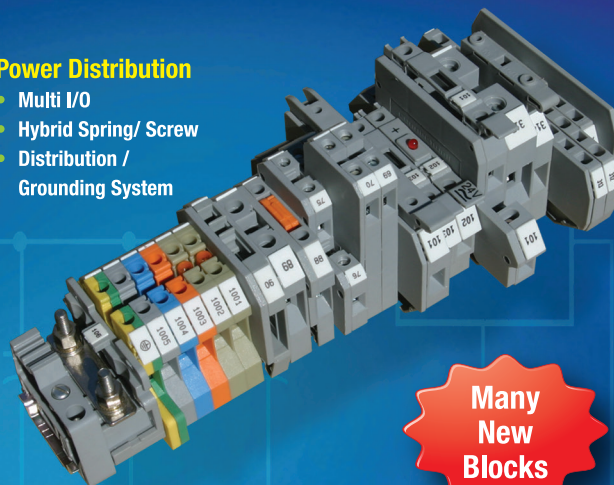
- 5x20mm/ 5x25mm Fuse
- Double Level Fuse Terminal
- 6.35x25.4mm (1/4" x 1") Fuse
- Component Carrier
- Fuse Holder

Special Application

- 1000V High Voltage
- Thermocouple
- Tab Connection
- Spring Loaded
- Electronic Components

Power Distribution

- Multi I/O
- Hybrid Spring/ Screw
- Distribution / Grounding System



Many
New
Blocks

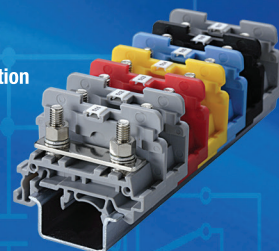
NEW

Easy to modify
Push-in Jumpers



SPRING CLAMP

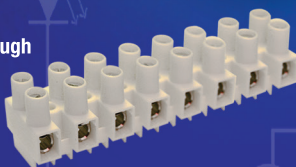
- Single Level Feed Through
- Multi Connection
- Ground/ Earth
- Double Level
- Electronic Component
- 5x20mm/ 5x25mm Fuse
- Component Carrier
- Disconnect
- Side Entry
- Pluggable
- Hybrid Distribution



Many
Accessories

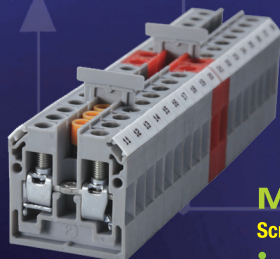
TERMINAL STRIPS - EUROSTRIP STYLE

- 300V Flat Base, Feed Through
- 600V Standoff Feet, Feed Through
- Pluggable
- Middle Barrier, Feed Through
- Accessories Terminal Strips



STUD / RING LUG

- Ring Lug Barrier Terminal Blocks
- Ring Lug Stud Terminal Blocks
- Ring Lug Hinge Terminal Blocks
- Ring Lug Power Terminal Blocks
- High Current Power Terminal Blocks



MINI/ PANEL MOUNT

Screw Clamp Terminal Blocks

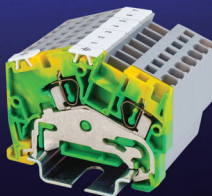
- 15mm Mini Rail
- Panel Mount

Spring Clamp Terminal Blocks

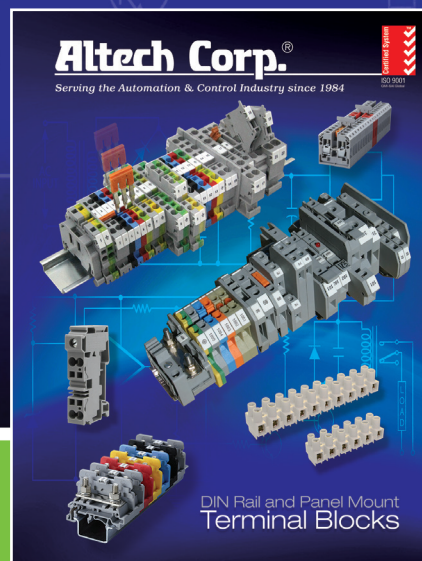
- 15mm Mini Rail
- Panel/ DIN Rail Mount
- Micro Panel Mount

ANGULAR

- Feed-Through
- Multi-Connection
- Multi-Level
- Ground/ Earth



MOUNTING
& MARKING
SOLUTIONS



Altech Corp.

Serving the Automation & Control Industry since 1984



DIN Rail and Panel Mount
Terminal Blocks

Altech Corp.

Contact info@altechcorp.com
908.806.9400
www.altechcorp.com

New 136 page catalog
now available in
print and on the web.