

INTRODUCING

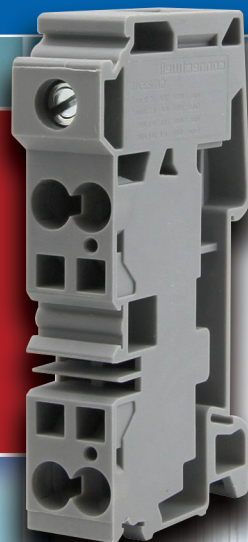
The Altech Hybrid Power Distribution Block
UNIQUE IN THE INDUSTRY

SAVE SPACE • TIME • COST

With a **16.0 mm** width, this block ...

Cat No. CXDB35/10
(sold in 1 pole)

- Saves valuable panel space
- Saves installation time
- Saves Cost



**3 Pole
CIRCUIT BREAKER
Solution
Example**

1 Input: 600V / 115A; 14-2 AWG wire size
SCREW CLAMP TERMINAL

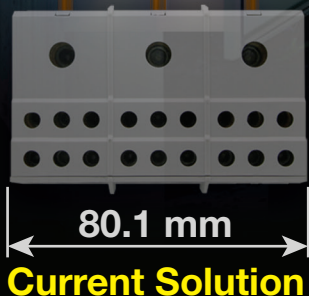
4 Outputs: 600V / 41A; 24-8 AWG wire size
SPRING CLAMP TERMINAL

Amount of outputs are **EXPANDABLE**.

Can be used with many
different products and applications.

NEW CLEAN SOLUTION

ONLY 48 mm WIDE



Many Other **NEW** Products
COMING SOON!

Altech Corp.®

Contact info@altechcorp.com
908.806.9400
www.altechcorp.com

