

Your search is over!

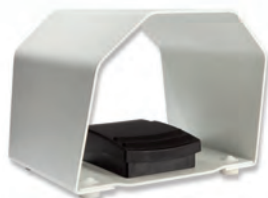
Altech offers Innovative Foot Switch Designs for many applications.

Medical

Designed to your specifications.

- Available in 1, 2 and 3 pedal designs
- Robust and slip resistant
- High quality materials, such as Aluminum cast alloy and reinforced polyamide
- Environmental protection level up to IP X8 per IEC/EN 60529
- Easily cleaned and hygienic
- Ergonomic design with intuitive actuation
- Custom colors and markings available

Large Selection Available



Industrial

Great for your heavy duty applications.

Internationally approved Foot Switches accommodate demanding industrial applications. Due to the sturdy design of the die cast aluminum housing, the foot switch is an exceptional value for strict environments. They can be easily customized with nameplates, imprints, cord sets, connectors and strain reliefs.

WIDE RANGE OF **RAL** COLORS AVAILABLE

	RAL 1018		RAL 5015		RAL 7001
	RAL 3000		RAL 5018		RAL 7016
	RAL 3003		RAL 5021		RAL 7021
	RAL 3027		RAL 5023		RAL 7035
	RAL 4001		RAL 6000		RAL 9005
	RAL 5002		RAL 6033		RAL 9010



Standard color - RAL 3000



Altech Corp.®

FootSwitches@altechcorp.com
908.806.9400 • www.altechcorp.com

