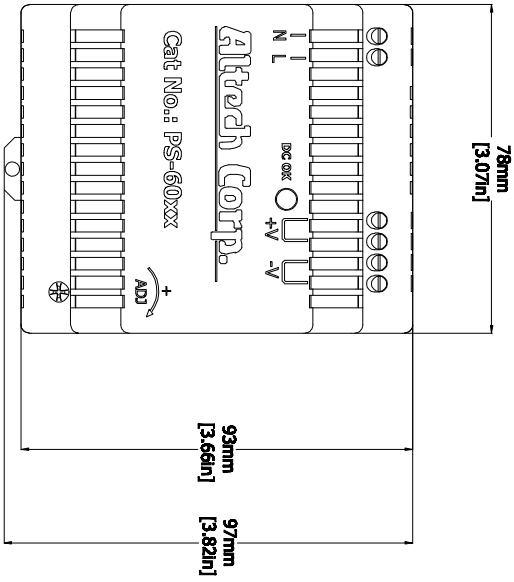
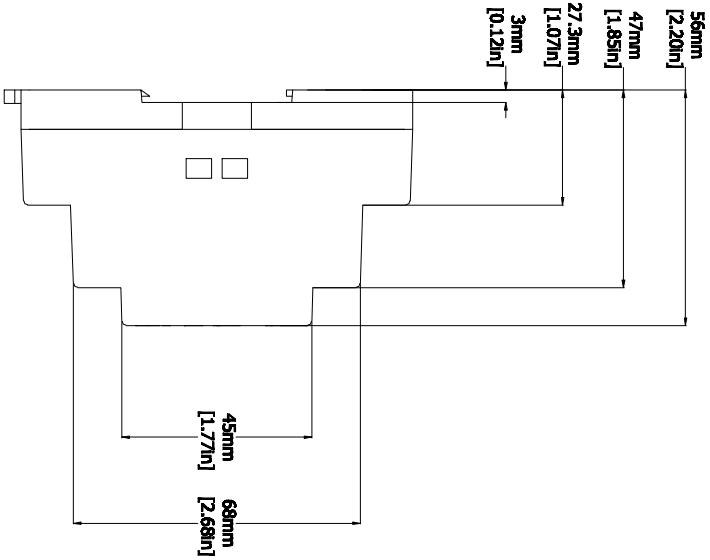
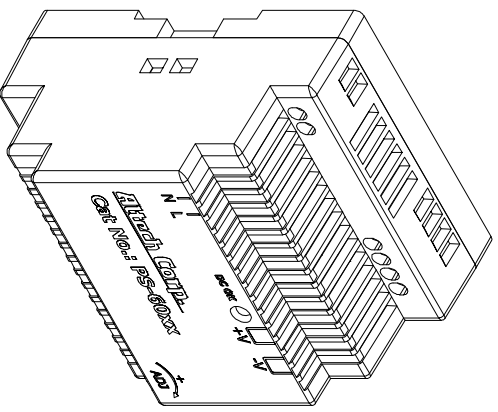
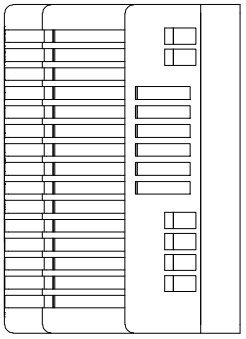


REVISIONS FOR DWG # 20-PS60-PS60				
REV	CH. NO.	DESCRIPTION	DATE	REVISED BY
-	-	ORIGINAL DESIGN	7/17/07	PHIL E.



UNLESS OTHERWISE SPECIFIED  
 • ALL DIMENSIONS ARE IN MILLIMETERS  
 • THIRD ANGLE PROJECTION

TOLERANCE  
 XX ±1mm  
 XX.X ±0.5mm  
 XX.XX ±0.2mm  
 ALL - mm

This Drawing is the property of  
**Altrach Corp.**  
 35 Royal Road  
 Flemington NJ 08822-6000  
 (908) 806-9400 • Fax (908) 806-9490

AND IS A CONFIDENTIAL DISCLOSURE  
 THAN WITHOUT CONSIDERATION OTHER  
 THAN THE BORROWER'S AGREEMENT  
 THAT IT SHALL NOT BE REPRODUCED,  
 COPIED, LENT, OR DISPOSED OF  
 DIRECTLY OR INDIRECTLY NOR USED  
 FOR ANY PURPOSE OTHER THAN THAT  
 FOR WHICH IT IS SPECIFICALLY  
 FURNISHED.

TITLE: 60W Single Phase DIN Rail Power Supply PS-60 Series		DRAWING NO.: 20-PS60-PS60		REV.:
DRAWN BY: P. ERNSTBERGER	7/17/07	SCALE: -	SHEET: 1	OF: 1
CHECKED BY: L. XYORGPAL	7/17/07			
RELEASED BY: L. XYORGPAL	7/17/07			