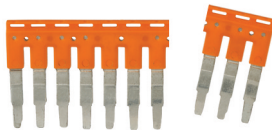


ACCESSORIES

Jumpers / Short Links

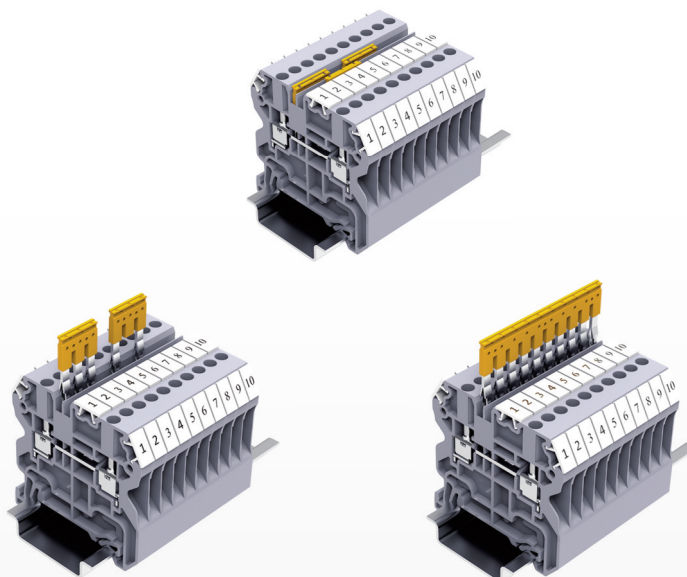


Terminal Block Series	Poles	Cat. No.	Std. Pk.
<b>CY2.5 Series</b> <b>CYG2.5 Series</b>	2 Pole	JX2.5/2	100
	3 Pole	JX2.5/3	50
	4 Pole	JX2.5/4	50
	5 Pole	JX2.5/5	50
	6 Pole	JX2.5/6	10
	7 Pole	JX2.5/7	10
	8 Pole	JX2.5/8	10
10 Pole	JX2.5/10	10	

<b>CY4 Series</b> <b>CYG4 Series</b>	2 Pole	JX4/2	100
	3 Pole	JX4/3	50
<b>CYF4</b> <b>CYK4</b>	4 Pole	JX4/4	50
	8 Pole	JX4/8	10
<b>CYDL Series</b>	10 Pole	JX4/10	10
	16 Pole	JX4/16	10

<b>CY6 Series</b> <b>CYG6 Series</b>	2 Pole	JY6/2	100
---	--------	-------	-----

<b>CY10 Series</b> <b>CYG10 Series</b>	2 Pole	JY10/2	10
---	--------	--------	----



2 Jumper Channels

Endplates

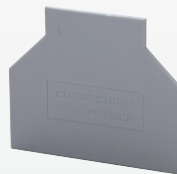


Terminal Block	Cat. No.	Dimensions	Std. Pk.
<b>CY2.5 / CYG2.5</b> <b>CY4 / CYG4</b> <b>CY6 / CYG6</b> <b>CY10 / CYG10</b>	EPCY2.5/10	41.3 x 50 x 1.5 mm	50

<b>CY4/3</b>	EPCY4/3	43 x 58 x 1.5 mm	50
--------------	---------	------------------	----

<b>CY4/4</b>	EPCY4/4	43 x 65 x 1.5 mm	50
--------------	---------	------------------	----

Partition Plates



Terminal Block	Cat. No.	Dimensions	Std. Pk.
<b>CY2.5 / CYG2.5</b> <b>CY4 / CYG4</b> <b>CY6 / CYG6</b> <b>CY10 / CYG10</b>	PPCY2.5/10	42 x 59 x 2 mm	50

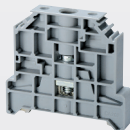
End Stops

**CA802**



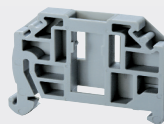
Cat. No.	Dimensions	Std. Pk.
<b>CA802</b>	45 x 32 x 8 mm	50

**CA202**



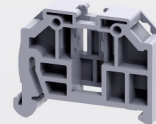
Cat. No.	Dimensions	Std. Pk.
<b>CA202</b>	44.5 x 50 x 9.5 mm	50

**CA103**  
(screwless snap-on)



Cat. No.	Dimensions	Std. Pk.
<b>CA103</b>	41 x 35 x 6mm	50

**CA104**  
(screwless snap-on)



Cat. No.	Dimensions	Std. Pk.
<b>CA104</b>	36 x 41 x 10 mm	50