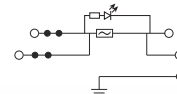
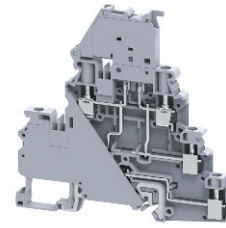
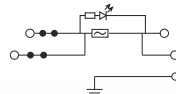
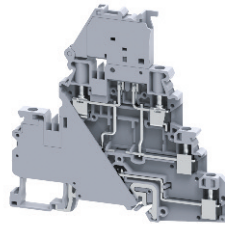
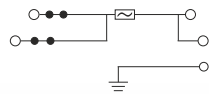
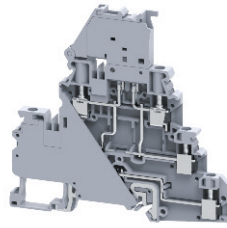


CYDLGF4LR

CYDLGF4LRL6-60V

CYDLGF4LRL110-240V



Dimensions & Weight

	CYDLGF4LR	CYDLGF4LRL6-60V	CYDLGF4LRL110-240V
Fuse Block, 5x20mm with 4 Connection Points Bottom: Ground 2x2 Jumper Channels		Fuse Block, 5x20mm , LED with 4 Connection Points Bottom: Ground 2x2 Jumper Channels	Fuse Block, 5x20mm , LED with 4 Connection Points Bottom: Ground 2x2 Jumper Channels
Width	6 mm	6 mm	6 mm
Length	94.5 mm	94.5 mm	94.5 mm
Height w DIN Rail	35 x 7.5 mm 35 x 15 mm	90.9 mm 98.4 mm	90.9 mm 98.4 mm
Weight per piece	41.5 g	35.4 g	35.4 g

Technical Data/Ratings

Approvals	C UL US E220514		C SF US 60947-7-1		IEC 60947-7-1	
Wire Size (solid / stranded)	24-10 AWG		0.2-4 mm ²		24-10 AWG 0.2-4 mm ²	
Voltage Rating	300 V		1000V AC/DC		300 V 500V AC/DC	
Current Rating Fuse	10 A		10 A		10 A 10 A	
Torque	4.5 lb-in		0.5 Nm		4.5 lb-in 0.5 Nm	
Insulation Material	Polyamide 66		Polyamide 66		Polyamide 66	

Fuse Specifications

Fuse Type	5x20 / 5x25 mm	5x20 / 5x25 mm	5x20 / 5x25 mm
LED Indicator Voltage	-	6-60V AC/DC	110-240V AC/DC

Installation Instructions

Wire Stripping Length	9 mm	9 mm	9 mm
Screwdriver	Flat Head 0.6 x 3.5 mm	Flat Head 0.6 x 3.5 mm	Flat Head 0.6 x 3.5 mm

Terminal Blocks

	Cat. No.	Std. Pk.	Cat. No.	Std. Pk.	Cat. No.	Std. Pk.
Grey (standard)	CYDLGF4LR	50	CYDLGF4LRL6-60L	50	CYDLGF4LRL110-240V	50
Blue BU	CYDLGF4LR/BU	50	CYDLGF4LRL6-60L/BU	50	CYDLGF4LRL110-240V/BU	50
Black BL	CYDLGF4LR/BL	50	CYDLGF4LRL6-60L/BL	50	CYDLGF4LRL110-240V/BL	50

Additional colors available.



Accessories

	Cat. No.	Std. Pk.	Cat. No.	Std. Pk.	Cat. No.	Std. Pk.
DIN Rail	2511120 CA701-15/S	20 20	2511120 CA701-15/S	20 20	2511120 CA701-15/S	20 20
End Stop	CA702 CA802 CA202	50 50 50	CA702 CA802 CA202	50 50 50	CA702 CA802 CA202	50 50 50
Shorting Link/ Jumpers	JX4/2 JX4/3 JX4/4 — — — — JX4/8 JX4/10 JX4/16	100 50 50 — — — — 10 10 10	JX4/2 JX4/3 JX4/4 — — — — JX4/8 JX4/10 JX4/16	100 50 50 — — — — 10 10 10	JX4/2 JX4/3 JX4/4 — — — — JX4/8 JX4/10 JX4/16	100 50 50 — — — — 10 10 10
Marking Tag Warning Label	MT6 WLX4	1 Pk. (100 tags) 1 Pk. (100 tags)	MT6 WLX4	1 Pk. (100 tags) 1 Pk. (100 tags)	MT6 WLX4	1 Pk. (100 tags) 1 Pk. (100 tags)

FEATURES

- Modified version of **CYDLGF4** with 2 equipotential Connections on each side
- 5x20mm fuse link
- Bottom Level Grounding Terminal
- 6mm wide compact design
- 2x2 internal jumper channels
- **CYDLGF4LRL** version with LED for blown fuse indication
- Blocks can be used in AC & DC applications

APPLICATIONS

- Tight Space Fuse applications
- Multi-wire fuse applications
- Control Systems with fuse applications