

CY SERIES

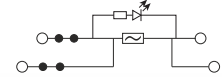
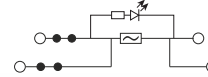
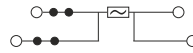
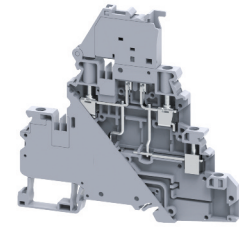
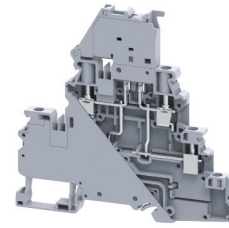
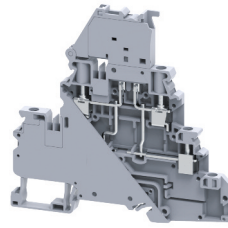
SCREW TERMINAL BLOCKS

Multi-Level Fuse Blocks, 5x20mm, 4 Connection Points

CYDLF4LR

CYDLF4LRL6-60V

CYDLF4LRL110-240V



Fuse Block, 5x20mm
with 4 Connection Points
2x2 Jumper Channels

Fuse Block, 5x20mm , LED
with 4 Connection Points
2x2 Jumper Channels

Fuse Block, 5x20mm , LED
with 4 Connection Points
2x2 Jumper Channels

Dimensions & Weight

| Width | 6 mm | |
|-------------------|-------------|---------|
| Length | 94.5 mm | |
| Height w DIN Rail | 35 x 7.5 mm | 90.9 mm |
| | 35 x 15 mm | 98.4 mm |
| Weight per piece | 34.9 g | |

Technical Data/Ratings

| Approvals | | | | | | |
|------------------------------|--------------|-----------------------|--------------|-----------------------|--------------|-----------------------|
| Wire Size (solid / stranded) | 24-10 AWG | 0.2-4 mm ² | 24-10 AWG | 0.2-4 mm ² | 24-10 AWG | 0.2-4 mm ² |
| Voltage Rating | 300 V | 1000V AC/DC | 300 V | 1000V AC/DC | 300 V | 500V AC/DC |
| Current Rating | 10 A | 10 A | 10 A | 10 A | 10 A | 10 A |
| Torque | 4.5 lb-in | 0.5 Nm | 4.5 lb-in | 0.5 Nm | 4.5 lb-in | 0.5 Nm |
| Insulation Material | Polyamide 66 | | Polyamide 66 | | Polyamide 66 | |

Fuse Specifications

| | | | |
|-----------------------|----------------|----------------|----------------|
| Fuse Type | 5x20 / 5x25 mm | 5x20 / 5x25 mm | 5x20 / 5x25 mm |
| LED Indicator Voltage | - | 6-60V AC/DC | 110-240V AC/DC |

Installation Instructions

| | | | |
|-----------------------|------------------------|------------------------|------------------------|
| Wire Stripping Length | 9 mm | 9 mm | 9 mm |
| Screwdriver | Flat Head 0.6 x 3.5 mm | Flat Head 0.6 x 3.5 mm | Flat Head 0.6 x 3.5 mm |

Terminal Blocks

| | Cat. No. | Std. Pk. | Cat. No. | Std. Pk. | Cat. No. | Std. Pk. |
|-----------------|-------------|----------|-------------------|----------|----------------------|----------|
| Grey (standard) | CYDLF4LR | 50 | CYDLF4LRL6-60L | 50 | CYDLF4LRL110-240V | 50 |
| Blue BU | CYDLF4LR/BU | 50 | CYDLF4LRL6-60L/BU | 50 | CYDLF4LRL110-240V/BU | 50 |
| Black BL | CYDLF4LR/BL | 50 | CYDLF4LRL6-60L/BL | 50 | CYDLF4LRL110-240V/BL | 50 |

Additional colors available.



Accessories

| | Cat. No. | Std. Pk. | Cat. No. | Std. Pk. | Cat. No. | Std. Pk. |
|---------------------------|----------------|------------------|----------------|------------------|----------------|------------------|
| DIN Rail | 2511120 | 20 | 2511120 | 20 | 2511120 | 20 |
| | CA701-15/S | 20 | CA701-15/S | 20 | CA701-15/S | 20 |
| End Stop | CA702 | 50 | CA702 | 50 | CA702 | 50 |
| | CA802 | 50 | CA802 | 50 | CA802 | 50 |
| | CA202 | 50 | CA202 | 50 | CA202 | 50 |
| Shorting Link/ Jumpers | 2 pole JX4/2 | 100 | 2 pole JX4/2 | 100 | 2 pole JX4/2 | 100 |
| | 3 pole JX4/3 | 50 | 3 pole JX4/3 | 50 | 3 pole JX4/3 | 50 |
| | 4 pole JX4/4 | 50 | 4 pole JX4/4 | 50 | 4 pole JX4/4 | 50 |
| | 5 pole - | - | 5 pole - | - | 5 pole - | - |
| | 6 pole - | - | 6 pole - | - | 6 pole - | - |
| | 7 pole - | - | 7 pole - | - | 7 pole - | - |
| | 8 pole JX4/8 | 10 | 8 pole JX4/8 | 10 | 8 pole JX4/8 | 10 |
| | 10 pole JX4/10 | 10 | 10 pole JX4/10 | 10 | 10 pole JX4/10 | 10 |
| | 16 pole JX4/16 | 10 | 16 pole JX4/16 | 10 | 16 pole JX4/16 | 10 |
| Marking Tag | MT6 | 1 Pk. (100 tags) | MT6 | 1 Pk. (100 tags) | MT6 | 1 Pk. (100 tags) |
| Warning Label | WLX4 | 1 Pk. (100 tags) | WLX4 | 1 Pk. (100 tags) | WLX4 | 1 Pk. (100 tags) |