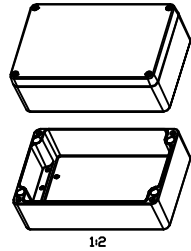
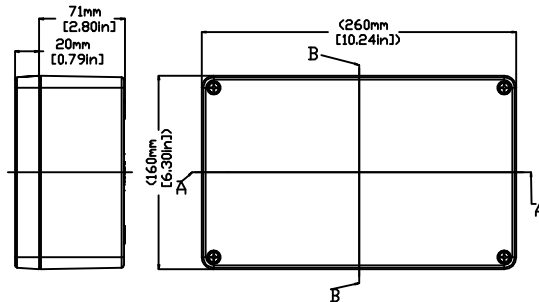
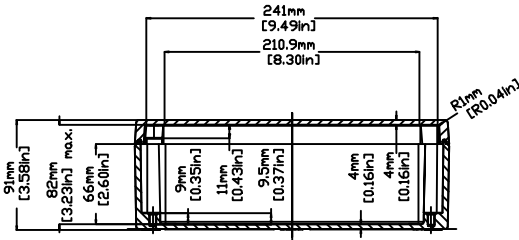


REVISIONS FOR DWG # 3EN-3IS-AL-AL2616-9

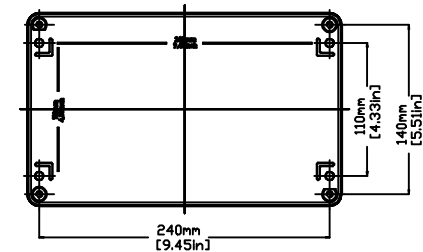
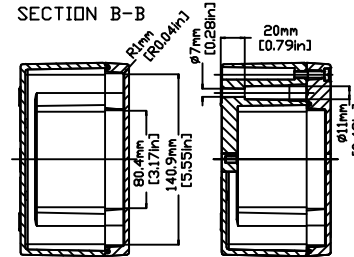
| REV | CH.NO. | DESCRIPTION | DATE | REVISED BY |
|-----|--------|-----------------|----------|------------|
| - | - | ORIGINAL DESIGN | 08/01/11 | ROLAND G |



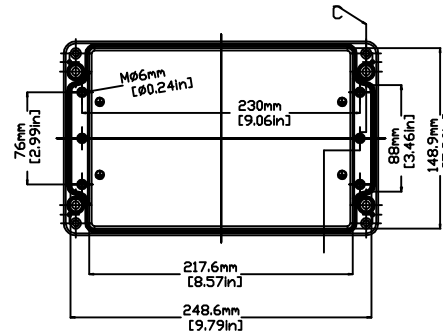
SECTION A-A



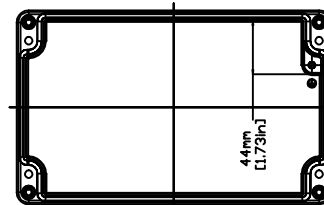
SECTION C-C



BOTTOM VIEW



INTERIOR VIEW WITHOUT LID



INTERIOR VIEW OF LID

UNLESS OTHERWISE SPECIFIED
 • ALL DIMENSIONS ARE IN MILLIMETERS
 • THIRD ANGLE PROJECTION

| TOLERANCE | Symbol | XX mm |
|-----------|--------|-------|
| XX.X | ± | XX mm |
| XX.XX | ± | XX mm |
| ALL | ± | XX mm |

THIRD ANGLE PROJECTION

This Drawing is the property of

Altrech Corp.

35 Royal Road
 Flemington NJ 08822-6000
 (908) 806-9400 • Fax (908) 806-9490

AND IS A CONFIDENTIAL DISCLOSURE
 LENT WITHOUT CONSIDERATION OTHER
 THAN THE BORROWER'S AGREEMENT
 THAT IT SHALL NOT BE REPRODUCED,
 COPIED, LENT, OR DISPOSED OF
 DIRECTLY OR INDIRECTLY NOR USED
 FOR ANY PURPOSE OTHER THAN THAT
 FOR WHICH IT IS SPECIFICALLY
 FURNISHED.

TITLE: ALUMINUM ENCLOSURE
 AL 2616-9 (150-012)

| | | | | | |
|------------------------------|------------|--------------|---------------------|--------|---------|
| DRAWN BY: ROLAND GYORGYAL | 08/01/2011 | DRAWING NO.: | 3EN-3IS-AL-AL2616_9 | REV.: | - |
| CHECKED BY: JEFF ROYE | 08/01/2011 | SCALE: | - | SHEET: | 1 OF: 1 |
| RELEASED BY: LASZLO G. | 08/01/2011 | | | | |