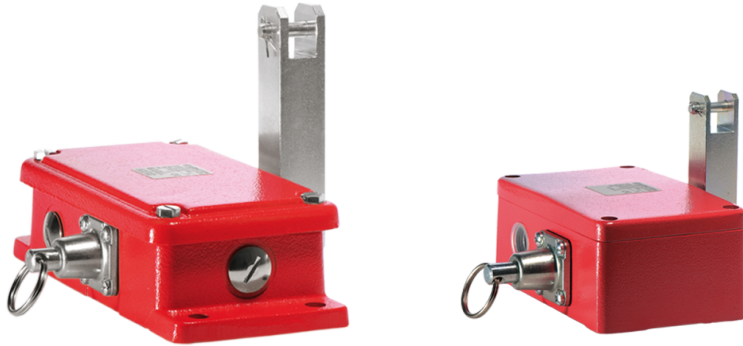


Double Sided Rope Pull Switches

Latching with Remote Release

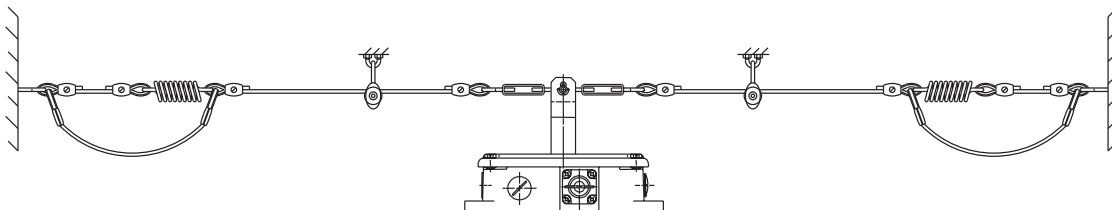


BERNSTEIN double-spanned rope pull switches (Si1 and Si2) are also used in emergency stop applications. When the cable is pulled the switching lever is deflected in the corresponding direction and the system shut down.

The switches are available in two metal versions, the Si1 and Si2.

These types of rope pull switch are ideally suited for applications with high temperature fluctuations and long cable spans. With their sturdy enclosure, the Si1 and Si2 are the perfect switches for harsh environments.

Two cables spanned in opposite directions are attached to the switching device. The countersprings are secured to the wall at the ends of the cables. Provided the change in temperature is the same at all points along the cable, the springs will effectively compensate for the change in cable length.



Technical data		Si1	Si2
Electrical data			
Rated insulation voltage U_i		250 V AC	400 V AC
Rated operating voltage U_e		250 V	240 V
Conventional thermal current		10 A	10 A
Utilisation category		AC-15, U_e / I_e 240 V / 3 A	AC-15, U_e / I_e 240 V / 3 A
Positive opening action	⊕	as per IEC/EN 60947-5-1, Addendum K	as per IEC/EN 60947-5-1, Addendum K
Short-circuit protection		Fuse 6 A gL/gG	Fuse 10 A gL/gG
Protection class		I	I
Mechanical data			
Enclosure		Aluminium sand casting	Cast iron
Cover		Aluminium sand casting	Cast iron
Actuation		Lever (GRP)	Lever (GRP)
Ambient temperature		- 30°C to + 80°C	- 30°C to + 80°C
Contact type		2 NC / 2 NO contact (Zb)	2 NC / 2 NO contact (Zb)
Mechanical service life (up to) ^①		1 x 10 ⁶ switching cycles	1 x 10 ⁶ switching cycles
Switching frequency max.		≤ 10 / min.	≤ 10 / min.
Mounting		4 x M8	4 x M8
B10d (up to) ^①		2 mill.	2 mill.
Type of connection		8 Screw connections (M3, 5)	8 Screw connections (M3, 5)
Conductor cross sections		Single-wire 0.5 – 1.5 mm ² or Stranded wire with ferrule 0.5 – 1.5 mm ²	Single-wire 0.5 – 1.5 mm ² or Stranded wire with ferrule 0.5 – 1.5 mm ²
Cable entry		1 x M20 x 1.5	3 x M20 x 1.5
Weight		≈ 1.62 kg	≈ 4.21 kg
Installation position		Any	Any
Protection class		IP65 conforming to EN 60529	IP65 conforming to EN 60529
Standards			
VDE 0660 T100, DIN EN 60947-1, IEC 60947-1			
VDE 0660 T200, DIN EN 60947-5-1, IEC 60947-5-1			

^① Depending on switching system. See Table on Pages 72 – 75.

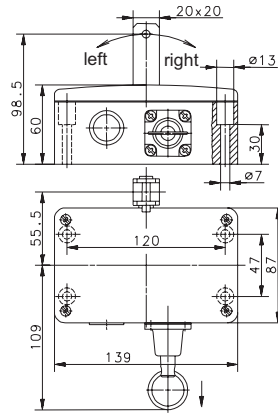
Product selection

Designation	Article number	Max. span length
SI1-U2Z AK R-RAST	6014735001	2 x 50 m
SI1-U1Z/U1Z AK R-RAST	6014735025	2 x 50 m
SI2-U2Z AK R-RAST	6015735002	2 x 50 m

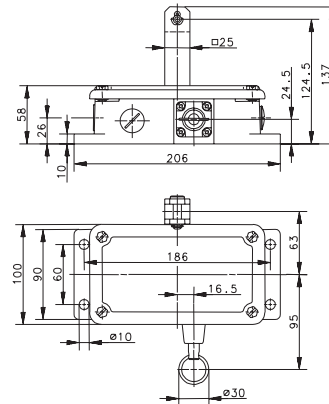
Double Sided Rope Pull Switches

Latching with Remote Release

SI1



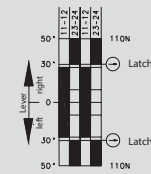
SI2



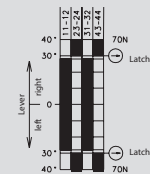
Variant 1

Article No.
Designation
Max. span

6014735001
SI1-U2Z AK R-RAST
2 x 50 m



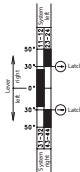
6015735002
SI2-U2Z AK R-RAST
2 x 50 m



Variant 2

Article No.
Designation
Max. span

6014735025
SI1-U1Z/U1Z AK R-RAST
2 x 50 m



Variant 3

Article No.
Designation
Max. span

Article No.
Designation
Max. span

Technical Data

Rated insulation voltage U_i max.
Rated operating voltage U_e max
Conventional thermal current I_{the}
Utilisation category U_e/I_e

250 V AC
240 V
10 A
AC-15, 240 V/3 A

400 V AC
240 V
10 A
AC-15, 240 V/3 A

Approvals



SI1



SI2