

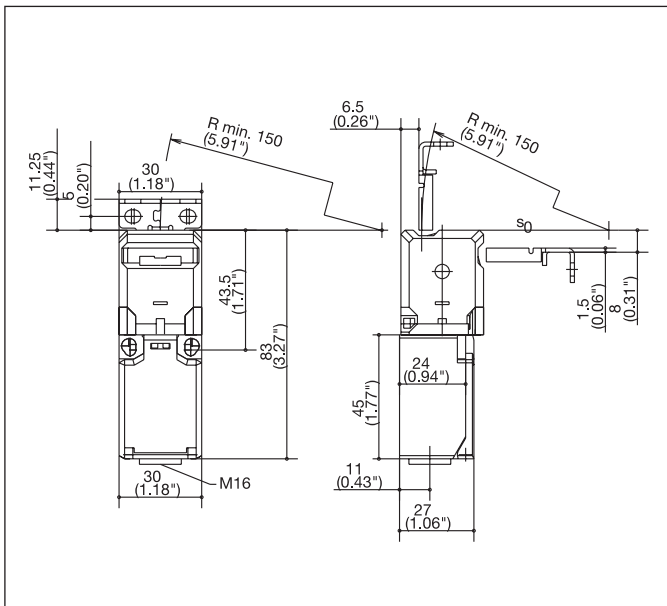
# SKT - Series

Very Small Plastic Body

Key Operated Safety Switch



## SKT



Safety switches with separate actuator are positive opening position switches. In terms of design, the switching element and actuator are separated. On actuation, the switching element and actuator are either brought together or separated. The positive opening NC contact is always open when the actuator is withdrawn. These switches are assigned to Type 2.

BERNSTEIN offers various versions of these Type 2 switches. The differences and advantages of the individual switch groups are outlined in the following.

The SKT is the smallest safety switch with a separate actuator. It is particularly suited for applications that require an extremely slim and short switch design. Its rotary head, two actuator openings and various switching functions underscore its versatility in extremely confined spaces.

Added to this, the SKT features other options to meet any requirements:

- **Integrated eject function (FE):**

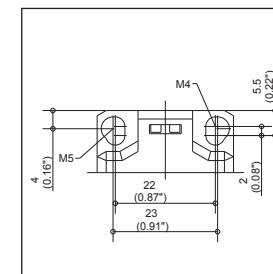
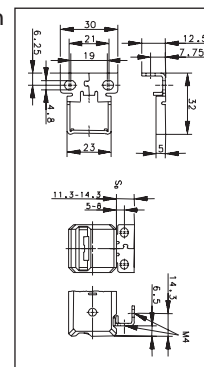
The actuator is ejected if the door is not locked securely. Consequently, the safety contact is opened, thus preventing the machine from starting up. In addition, this function makes it apparent that the door still needs to be locked.

- **Actuating force (up to 50 N):**

The standard actuating force is 10 N. Depending on the switch variant, an actuating force of 50 N can also be selected. In many applications, hatches and doors need to be secured to prevent them being opened unintentionally. This is achieved by means of bolts, fasteners or other latching mechanisms. The SKI safety switch should be selected for applications requiring increased actuating force.

- **Universal Hinged Actuator (MRU):**

The MRU actuator is ideally suited for applications where the installation conditions severely restrict the actuating travel or radius. It has an adjustable actuating radius in the horizontal and vertical plane.



R<sub>min</sub> 150 mm  
Actuating forces FE to FI50

### Technical data

#### Electrical data

Rated insulation voltage	U <sub>i</sub> max.	250 V
Rated operating voltage	U <sub>e</sub> max.	240 V AC
Conventional thermal current	I <sub>the</sub>	10 A
Utilization category		AC-15, U <sub>e</sub> /I <sub>e</sub> 240 V / 3 A; DC-13, U <sub>e</sub> /I <sub>e</sub> 250 V / 0.27 A

#### Mechanical data

Switching frequency	≤ 30/min
Mechanical service life Standard	1 x 10 <sup>6</sup> switching cycles
Mechanical service life increased actuator holding force	1 x 10 <sup>5</sup> switching cycles
B10d (up to) <sup>①</sup>	2 Mill.
Short-circuit protection	Fuse 6 A gL/gG
Protection class	II, Insulated
Ambient temperature	-30 °C to + 80 °C
Protection class	IP65 conforming to IEC/EN 60529
Type of connection	Screw connections
Conductor cross sections	Single-wire 0.5 – 1.5 mm <sup>2</sup> or Stranded wire with ferrule 0.5 – 1.5 mm <sup>2</sup>
Enclosure	Thermoplastic, glass fibre-reinforced (UL94-V0)
Cable entry	M16 x 1.5

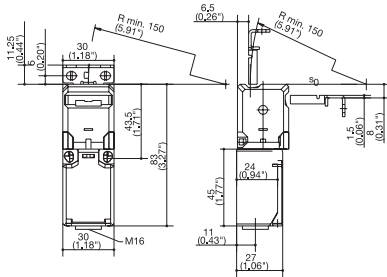
#### Standards

VDE 0660 T100, DIN EN 60947-1, IEC 60947-1  
VDE 0660 T200, DIN EN 60947-5-1, IEC 60947-5-1

① Depending on switching system. See Table on Pages 72 – 75.

# SKT Safety Switches with Separate Actuator

**SKT**



**Switching operation**      **Standard**      **High actuating force**      **Radius actuation**

**1 NC / 1 NO contact**      **6016419059**  
SKT-U1Z M3

**1 NC contacts**

**2 NC contacts**      **6016469066**  
SKT-A2Z M3

**2 NC / 1 NO contact**  
**Overlapping**

**Approvals**      

**Special features / variants**  
(on request)

- Replacement actuator for:  
**3112850340**