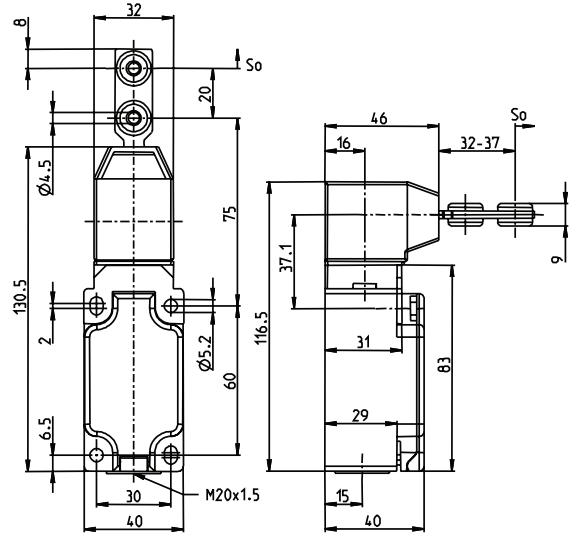


## ENK Series - Plastic Body Industrial Format



These keyed operated safety interlock switches from the ENK series correspond to Type 2.

This means that you can use Type 1 and Type 2 position switches corresponding from one series of switches for all your applications.

This results in many advantages:

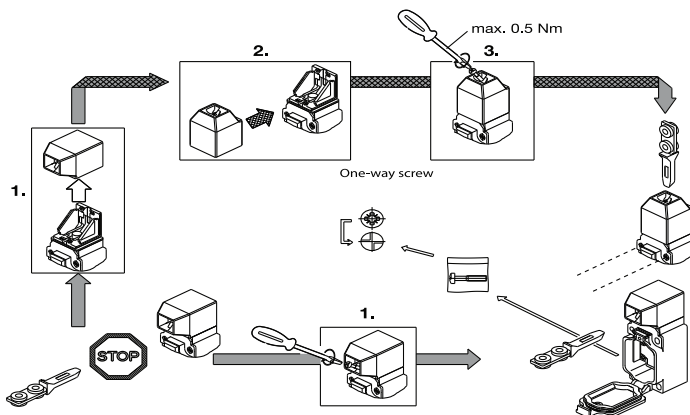
- **Standardization:**

Switches of one family have the same mounting dimensions and the same electrical properties.

- **Reduced costs:**

The ENK series are used in large quantities. This not only reflects the quality of the products but also means lower prices compared to special designs used in small quantities.

### Variable VTU head

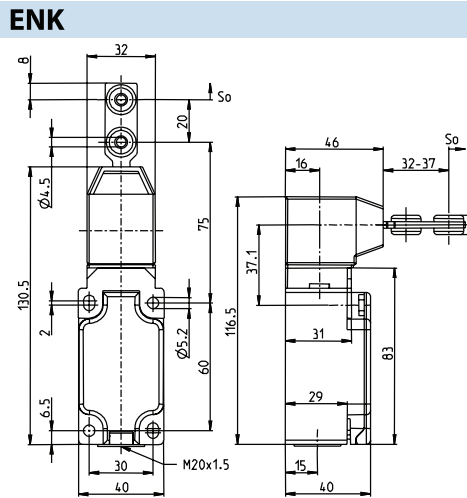


Repositioning the actuator head either in horizontal or vertical direction results in 8 approach actuator directions.

Technical data		
<b>Electrical data</b>		
Rated insulation voltage	$U_i$	400 V AC
Conventional thermal current (up to) <sup>1</sup>	$I_{the}$	10 A
Rated operating voltage	$U_o$	240 V
Utilization category (up to) <sup>1</sup>		AC-15, $U_o / I_o$ 240 V / 3 A
Forced disconnection	$p$	conforming to IEC/EN 60947-5-1, Addendum K
Short-circuit protection (up to) <sup>1</sup>		Fuse 10 A gL/gG
Protection class		II, Insulated
<b>Mechanical data</b>		
Enclosure		Thermoplastic, glass fibre-reinforced
Cover		Thermoplastic, glass fibre-reinforced
Actuation		Separate actuator, (St/PA), Actuator (PA6 GV/Zn-GD)
Ambient temperature		-30°C to +80°C
Mechanical service life		1 x 10 <sup>6</sup> switching cycles
B10d		2 mill.
Switching frequency		max. 30/min.
Mounting		4 x M5
Type of connection		Screw connections
Conductor cross sections		Single-wire 0.5 - 1.5 mm <sup>2</sup> or Stranded wire with ferrule 0.5 - 1.5 mm
Cable entry		1 x M20 x 1.5
Weight		≈ 0.23 kg
Installation position		Any
Protection class		IP65 conforming to EN 60529
<b>Standards</b>		
VDE 0660 T100, DIN EN 60947-1, IEC 60947-1		
VDE 0660 T200, DIN EN 60947-5-1, IEC 60947-5-1		

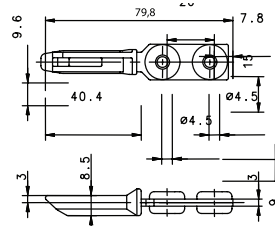
<sup>1</sup> Depending on switching system -see technical information for details

ENK Series



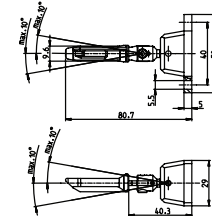
Replacement actuator keys:

A1 ACTUATOR KEY  
391.1702.228



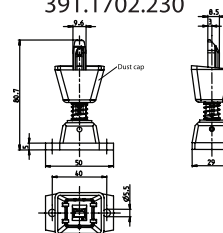
15.7" Minimum Bend Radius

A2 ACTUATOR KEY  
391.1702.229



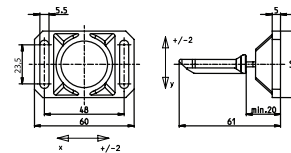
5.9" Minimum Bend Radius

A3 ACTUATOR KEY  
391.1702.230



15.7" Minimum Bend Radius

A4 ACTUATOR KEY  
391.1702.231



13.8" Minimum Bend Radius

Switching Operation	Slow Action	High Activation Force	Radius Activation
1 NC / 1 NO Contacts	601.6619.132 ENK-U1Z VTU 	-	-
1 NC Contacts	-	-	-
2 NC Contacts	601.6669.133 ENK-A2Z VTU 	-	-
2 NC / 1 NO Contacts Overlapping	601.6669.154 ENK-UV15Z VTU 	-	-

Technical Information

	Slow Action	High Activation Force	Radius Activation
Maximum Switching Voltage	240V		
Max. Switching Amps (up to)*	10A		
B10d (up to)*	20 Million		
Mechanical Service Life (up to)*	10 x 10 <sup>6</sup>		
Switching Frequency	≤ 30/min		
Operating Temperature	-30 °C to +80 °C		
Protection Rating	IP65		
Utilization Category (up to)*	AC-15, Ue/Ue 240V 3A		
Rate Insulation Voltage	250VAC		

\* Depending on switching system - see technical information for details

