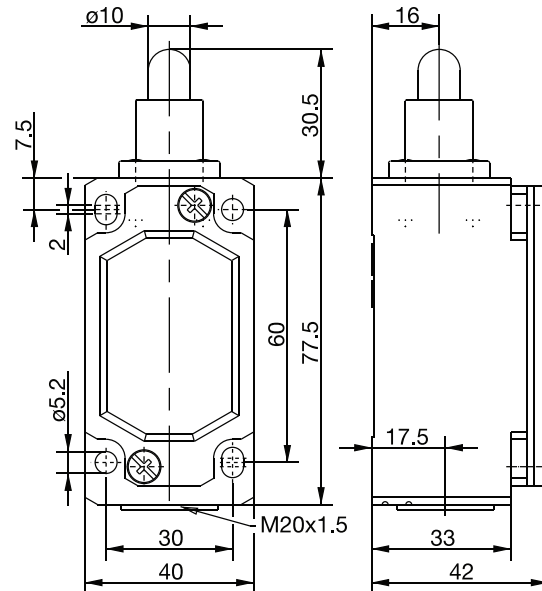


ENM2 Series



Recommended use

With its standard enclosure size, the ENM2 limit switch is a perfect series for use in industrial and safety applications, where a rugged and durable switch is required.

Product advantages

- Standard switch conforming to DIN EN 50041
- Standard actuator conforming to DIN EN 50041, Type A, B, C, D
- Protection class IP65 to VDE 0470 T1
- Enclosure: Aluminum pressure die-casting
- Cover: Sheet aluminum
- Actuator can be repositioned by 4 x 90°
- Cable entry M20 x 1.5
- Connection designation conforming to DIN EN 50013
- Metal actuators for high loads

Options

- AS interface versions on request
- Preassembled with customer-specific cables and connectors on request

Design layout

- Slow-action and snap-action contacts
- Versions: 1 NC /1NO, 2 NC, overlapping contacts
- All NC contacts with \ominus in the circuit diagram are positively opening contacts
- Type: Zb (galvanically isolated changeover contact)

Mounting

- Two M5 adjustment screws with slots
- Two M5 screws for safety applications without additional securing element

Installation advantages

- Screw connections with self-lifting clamping plates
- Easy-to-change switching system thanks to snap-in retainer (depending on type)
- Finely adjustable switching point with adjusting screw
- Captive cover screws
- Enlarged connection space
- Earthing surface on same level as switching system

Technical data

Electrical data	
Rated insulation voltage (up to) ¹	U _i max. 400 V AC
Conventional thermal current (up to) ¹	I _{the} 10 A
Rated operating voltage	U _e max. 240 V
Utilization category (up to) ¹	A300, AC-15, U _e /I _e 240 V/3 A
Short-circuit protection (up to) ¹	Fuse 10 A gL/gG
Protection class	I
Mechanical data	
Enclosure material	Aluminum pressure die-casting
Ambient temperature	-30 °C to +80 °C
Mechanical service life (up to) ¹	10 x 10 ⁶ switching cycles
B10d (up to) ¹	20 Mill.
Switching frequency	≤ 100/min.
Type of connection	Screw connections
Conductor cross sections	Single-wire 0.5 - 1.5 mm ² or Stranded wire with ferrule 0.5 - 1.5 mm ²
Cable entry	1 x M20 x 1.5
Protection class	IP65 conforming to IEC/EN 60529
Standards	
VDE 0660 T100, DIN EN 60947-1, IEC 60947-1 VDE 0660 T200, DIN EN 60947-5-1, IEC 60947-5-1	

¹ Depending on switching system. See Table on Pages 76-79.

Drawing dimensions in mm