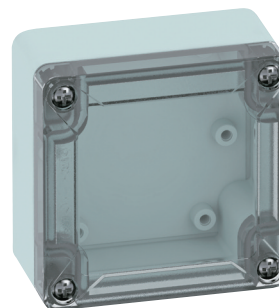
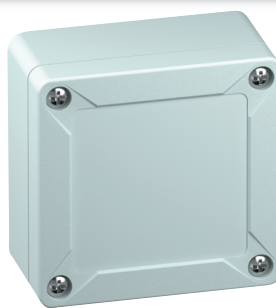


TG88-6 – ABS and Polycarbonate – 84 x 82 x 55 mm (3.31 x 3.23 x 2.17 in.)

Standard Features

- **Protection Level:** IP67 (UL TYPE 4X/12*)
- **Technical:**
 - Smooth Sidewalls
 - Gray or Transparent Cover
 - Standard or Quick Turn Screws
 - 60 x 58 x 0.4 mm Recess in Cover
 - Integrated Cover Retainer
- **UL Recognized Enclosure Materials:** ABS or Polycarbonate
- **Transparent Cover Material:** Polycarbonate
- **Gasket Material:** Polyurethane
- **Color:** Light Gray
- **Material Temperature Range:**
 - ABS: -40°C to 80°C (-40°F to 176°F)
 - Polycarbonate: -40°C to 120°C (-40°F to 248°F)
- **Accessories:** See section below



* UL TYPE 4X (Polycarbonate, standard screws)
UL TYPE 12 (Polycarbonate, quick turn screws)

TG

| Ordering Information | Cat. No. w/ Standard Screws | Cat. No. w/ Quick Turn Screws | Type | Length | Dimensions mm (in) | | Std. Pk. |
|----------------------|-----------------------------|-------------------------------|--------------|------------------|--------------------|------------------|----------|
| | | | | | Width | Height | |
| ABS | | | | | | | |
| Gray cover | DISCONTINUED | 100-403-01 | TGABS88-6-o | 84 mm (3.31 in.) | 82 mm (3.23 in.) | 55 mm (2.17 in.) | 1 |
| Transparent cover | | 101-003-01 | TGABS88-6-to | 84 mm (3.31 in.) | 82 mm (3.23 in.) | 55 mm (2.17 in.) | 1 |
| Polycarbonate | | | | | | | |
| Gray cover | 200-403-91 | 200-403-01 | TGPC88-6-o | 84 mm (3.31 in.) | 82 mm (3.23 in.) | 55 mm (2.17 in.) | 1 |
| Transparent cover | 201-003-91 | 201-003-01 | TGPC88-6-to | 84 mm (3.31 in.) | 82 mm (3.23 in.) | 55 mm (2.17 in.) | 1 |

Accessories

| Ordering Information | Cat. No. | Type | Std. Pk. |
|--------------------------|----------|----------|----------|
| Mounting Plate (plastic) | 186-003 | TGMPI-88 | 1 |
| Mounting Plate (steel) | 187-003 | TGMPS-88 | 1 |
| DIN Rail – TS35-68 | 198-068 | NS35-68 | 1 |
| DIN Rail - TS15-68 | 197-069 | TS15-68 | 1 |
| Mounting Tab Kit | 182-002 | TGABL | 1 |

Please refer to pages 149-152 additional accessories and detailed information

