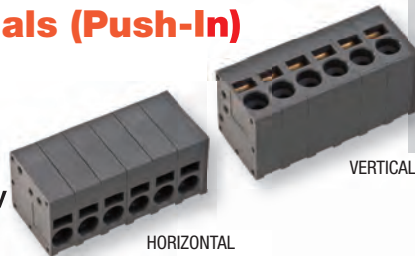


# PCB Power Terminals (Push-In)

5.00 mm Pin Spacing

- Push-In Technology
- 20A
- Various Colors
- Standard Color: Dark Gray



**AK4200/xx-5.0-H**

HORIZONTAL

**AK4200/xx-5.0-V**

VERTICAL

## Electrical Ratings

Usergroup		B	C	D	-	
Rated Voltage		300V	-	300V	250V	
Rated Current		20A	-	10A	24A	
Wire Size	<i>solid</i>	24-12AWG	-	24-12AWG	0.2mm <sup>2</sup> -2.5mm <sup>2</sup>	
	<i>stranded</i>	24-12AWG	-	24-12AWG	0.2mm <sup>2</sup> -2.5mm <sup>2</sup>	

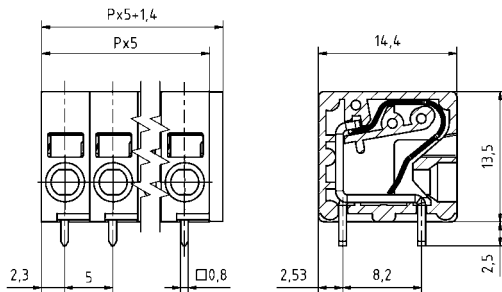
## Ordering Information - Horizontal, Gray - RAL7012

No. Poles	Order #	Type #	Length (mm)	Std. Pack
1	<b>39.8101</b>	AK4200/1-5.0-H-G	6.40	100
2	<b>39.8102</b>	AK4200/2-5.0-H-G	11.40	50
3	<b>39.8103</b>	AK4200/3-5.0-H-G	16.40	50
4	<b>39.8104</b>	AK4200/4-5.0-H-G	21.40	50
5	<b>39.8105</b>	AK4200/5-5.0-H-G	26.40	50
6	<b>39.8106</b>	AK4200/6-5.0-H-G	31.40	50
7	<b>39.8107</b>	AK4200/7-5.0-H-G	36.40	50
8	<b>39.8108</b>	AK4200/8-5.0-H-G	41.40	50
9	<b>39.8109</b>	AK4200/9-5.0-H-G	46.40	50
10	<b>39.8110</b>	AK4200/10-5.0-H-G	51.40	50
11	<b>39.8111</b>	AK4200/10-5.0-H-G	56.40	50
12	<b>39.8112</b>	AK4200/12-5.0-H-G	61.40	50

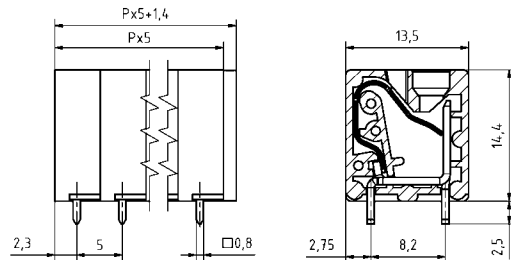
## Ordering Information - Vertical, Gray - RAL7012

No. Poles	Order #	Type #	Length (mm)	Std. Pack
1	<b>39.8151</b>	AK4200/1-5.0-V-G	6.40	100
2	<b>39.8152</b>	AK4200/2-5.0-V-G	11.40	50
3	<b>39.8153</b>	AK4200/3-5.0-V-G	16.40	50
4	<b>39.8154</b>	AK4200/4-5.0-V-G	21.40	50
5	<b>39.8155</b>	AK4200/5-5.0-V-G	26.40	50
6	<b>39.8156</b>	AK4200/6-5.0-V-G	31.40	50
7	<b>39.8157</b>	AK4200/7-5.0-V-G	36.40	50
8	<b>39.8158</b>	AK4200/8-5.0-V-G	41.40	50
9	<b>39.8159</b>	AK4200/9-5.0-V-G	46.40	50
10	<b>39.8160</b>	AK4200/10-5.0-V-G	51.40	50
11	<b>39.8161</b>	AK4200/10-5.0-V-G	56.40	50
12	<b>39.8162</b>	AK4200/12-5.0-V-G	61.40	50

## Dimensions (mm)



## Dimensions (mm)



## Material Specifications

Spring Clamp	Stainless Steel
Solder Tab	Copper Alloy
Insulating Material	PA 6.6
Flammability Class	UL94V-0
Operating Temperature	-30°C - +105°C

## Wave Solder Process

Soldering Temperature	265°C
Peak Soldering Time	3-4s

## Installation Data

Stripping Length	10mm
PCB Hole Size	1.1mm

## Other Colors Available

- BLACK, RAL 9011**
- GREEN, RAL 6018**
- ORANGE, RAL 2011**
- RED, RAL 3003**
- BLUE, RAL 5015**

PUSH-IN

PCB POWER TERMINALS  
PUSH-IN

TENSION SPRING

PLUGGABLE  
PUSH-IN