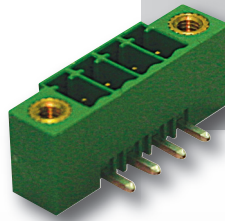


# PCB Plug-In Header

3.50 mm Pin Spacing

- Horizontal Header
- 11A Current Rating
- Screw Flange



# PHxx-3,50-K

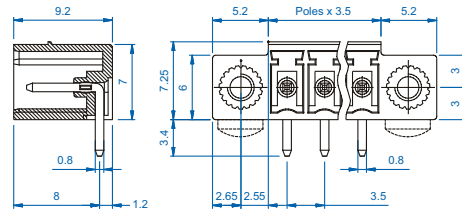
## Electrical Ratings

		UL E178356		IEC		VDE	
Usergroup		B	C	D	-		
Rated Voltage		300V	-	300V	160V		
Rated Current		11A	-	11A	8A		
Wire Size		-		-		-	
<i>solid</i>		-	-	-	-		
<i>stranded</i>		-	-	-	-		

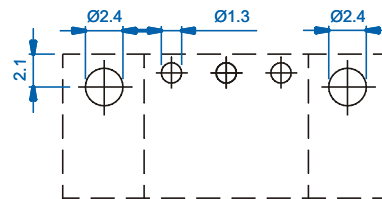
## Ordering Information (3.50 mm Spacing)

No. Poles	Order #	Length (mm)	Std. Pack
2	PH02-3,50-K	17.4	100
3	PH03-3,50-K	20.9	100
4	PH04-3,50-K	24.4	50
5	PH05-3,50-K	27.9	50
6	PH06-3,50-K	31.4	50
7	PH07-3,50-K	34.9	50
8	PH08-3,50-K	38.4	50
9	PH09-3,50-K	41.9	50
10	PH10-3,50-K	45.4	50
11	PH11-3,50-K	48.9	50
12	PH12-3,50-K	52.4	50
13	PH13-3,50-K	55.9	20
14	PH14-3,50-K	59.4	20
15	PH15-3,50-K	62.9	20
16	PH16-3,50-K	66.4	20
17	PH17-3,50-K	69.9	20
18	PH18-3,50-K	73.4	20
19	PH19-3,50-K	76.9	20
20	PH20-3,50-K	80.4	20
21	PH21-3,50-K	83.9	20
22	PH22-3,50-K	87.4	20
23	PH23-3,50-K	90.9	20
24	PH24-3,50-K	94.4	20

## Dimensions (mm)



## Drilling Diagram



## Material Specifications

Solder Tab	Tin-Plated Copper Alloy
Insulating Material	Polyamide
Flammability Class	V0 UL94
Operating Temperature	-30°C - +105°C

## Installation Data

PCB Hole Size	1.3 mm
Flange Thread	M2.5
Recommended	Parker
Mounting Screw	ISO1481-ST 2,2x4,5(6,5) C

## Mating Plugs

SHxx-3,50-K	SVFxx-3,50-K	SVPxx-3,50-K
-------------	--------------	--------------