

Fork Type Jumper



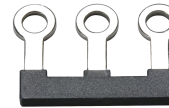
Insulated Fork Type Jumper



Ring Lug Jumper



Insulated Ring Lug Jumper



Internal Jumper



Alternate Jumper for STH4DT Series



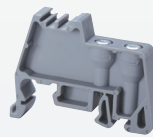
| Terminal Block Series | Poles   | Cat. No.   | Std. Pk. | Cat. No.   | Std. Pk. | Cat. No.   | Std. Pk. | Cat. No.   | Std. Pk. | Cat. No. | Std. Pk. | Cat. No. | Std. Pk.                         |
|-----------------------|---------|------------|----------|------------|----------|------------|----------|------------|----------|----------|----------|----------|----------------------------------|
| CBS3U                 | 2 Pole  | CA512/15-2 | 100      | CA514/15-2 | 100      | CA512/17-2 | 100      | CA514/17-2 | 100      | CA728/2  | 50       |          |                                  |
| CSB3/N3U              | 3 Pole  | CA512/15-3 | 50       | CA514/15-3 | 50       | CA512/17-3 | 50       | CA514/17-3 | 50       | CA728/3  | 50       |          | N/A                              |
| CSB3/N3UL             | 4 Pole  | CA512/15-4 | 50       | CA514/15-4 | 50       | CA512/17-4 | 50       | CA514/17-4 | 50       | CA728/4  | 50       |          | N/A                              |
| STH3                  | 10 Pole |            |          |            |          |            |          |            |          | CA728/10 | 10       |          |                                  |
| CBS4U                 | 2 Pole  | CA512/2-2  | 100      | CA514/2-2  | 100      | CA512/4-2  | 100      | CA514/4-2  | 100      | CA772/2  | 100      |          |                                  |
| CBS5U                 | 3 Pole  | CA512/2-3  | 50       | CA514/2-3  | 50       | CA512/4-3  | 50       | CA514/4-3  | 50       | CA772/3  | 50       |          | N/A                              |
| CSB4/N4UL             | 4 Pole  | CA512/2-4  | 50       | CA514/2-4  | 50       | CA512/4-4  | 50       | CA514/4-4  | 50       | CA772/4  | 50       |          | N/A                              |
| CSB5/N5U              | 10 Pole |            |          |            |          |            |          |            |          | CA772/10 | 10       |          |                                  |
| CSTSN4U               |         |            |          |            |          |            |          |            |          |          |          |          |                                  |
| CSTSN5U               | 2 Pole  | CA512/1-2  | 100      | CA514/1-2  | 100      | CA512/3-2  | 100      | CA514/3-2  | 100      |          |          |          | N/A                              |
| CSTSN6U               | 3 Pole  | CA512/1-3  | 50       | CA514/1-3  | 50       | CA512/3-3  | 50       | CA514/3-3  | 50       |          |          |          | N/A                              |
| CSTSB4U               | 4 Pole  | CA512/1-4  | 50       | CA514/1-4  | 50       | CA512/3-4  | 50       | CA514/3-4  | 50       |          |          |          | N/A                              |
| CSTSB5U               |         |            |          |            |          |            |          |            |          |          |          |          |                                  |
|                       | 2 Pole  | CA512/7-2  | 100      | CA514/7-2  | 100      | CA512/8-2  | 100      | CA514/8-2  | 100      |          |          |          |                                  |
| CSTSN6U               | 3 Pole  | CA512/7-3  | 50       | CA514/7-3  | 50       | CA512/8-3  | 50       | CA514/8-3  | 50       |          |          |          | N/A                              |
|                       | 4 Pole  | CA512/7-4  | 50       | CA514/7-4  | 50       | CA512/8-4  | 50       | CA514/8-4  | 50       |          |          |          | N/A                              |
| STH4                  | 2 Pole  | CA512/13-2 | 100      | CA514/13-2 | 100      | CA512/14-2 | 100      | CA514/14-2 | 100      |          |          |          |                                  |
| STH4DT                | 3 Pole  | CA512/13-3 | 50       | CA514/13-3 | 50       | CA512/14-3 | 50       | CA514/14-3 | 50       |          |          |          | N/A                              |
| STH4DTFT              | 4 Pole  | CA512/13-4 | 50       | CA514/13-4 | 50       | CA512/14-4 | 50       | CA514/14-4 | 50       |          |          |          | CA514/14-3A 10<br>CA514/14-4A 10 |
|                       | 2 Pole  |            |          |            |          |            |          |            |          | CA774/2  | 100      |          |                                  |
| STH6                  | 3 Pole  | N/A        |          | N/A        |          | N/A        |          | N/A        |          | CA774/3  | 50       |          |                                  |
|                       | 4 Pole  |            |          |            |          |            |          |            |          | CA774/4  | 50       |          |                                  |

END STOPS

CA802



CA707



CA202

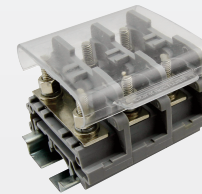


| Cat. No | Dimensions     | Std. Pk. |
|---------|----------------|----------|
| CA802   | 32 x 45 x 8 mm | 50       |

| Cat. No | Dimensions     | Std. Pk. |
|---------|----------------|----------|
| CA702   | 34 x 45 x 9 mm | 50       |

| Cat. No | Dimensions         | Std. Pk. |
|---------|--------------------|----------|
| CA202   | 44.5 x 50 x 9.5 mm | 50       |

ENDPLATES / PROTECTIVE COVERS



For CBS, CSB, CSTS Series

| Terminal Block | Cat. No  | Dimensions         | Std. Pk. |
|----------------|----------|--------------------|----------|
| CBS Series     | EPCBS3U  | 26.2 x 49 x 1.5 mm | 50       |
| CSB Series     |          |                    |          |
| CSTSN Series   | EPCSTSU  | 31 x 50 x 1.5 mm   | 50       |
| CSTSB Series   |          |                    |          |
| STH3           | EPSTH3   | 34 x 47 x 1.5 mm   | 50       |
| STH4           | EPSTH4   | 39.5 x 46 x 1.5 mm | 50       |
| STH6           | EPSTH6   | 51 x 63.5 x 1.5 mm | 50       |
| STH4DT         | EPSTH4DT | 37.5 x 86 x 1.5 mm | 50       |

| Length | Cat. No.  | Std. Pk. |
|--------|-----------|----------|
| 100mm  | CSTSPC1-2 | 10       |
| 200mm  | CSTSPC1-3 | 10       |
| 300mm  | CSTSPC1-4 | 10       |