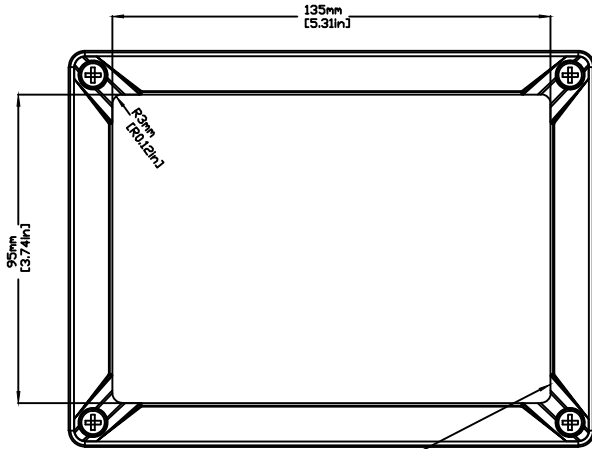
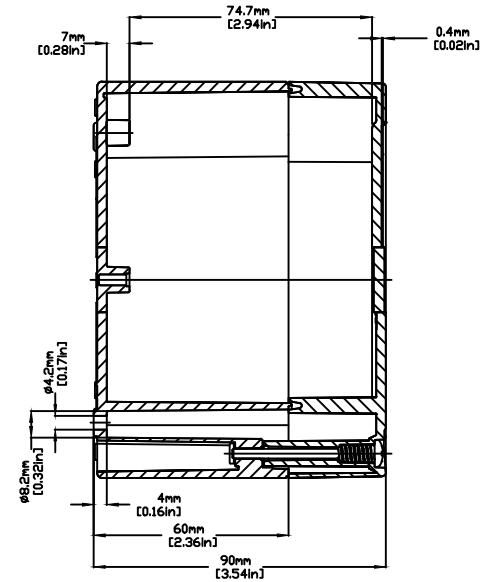
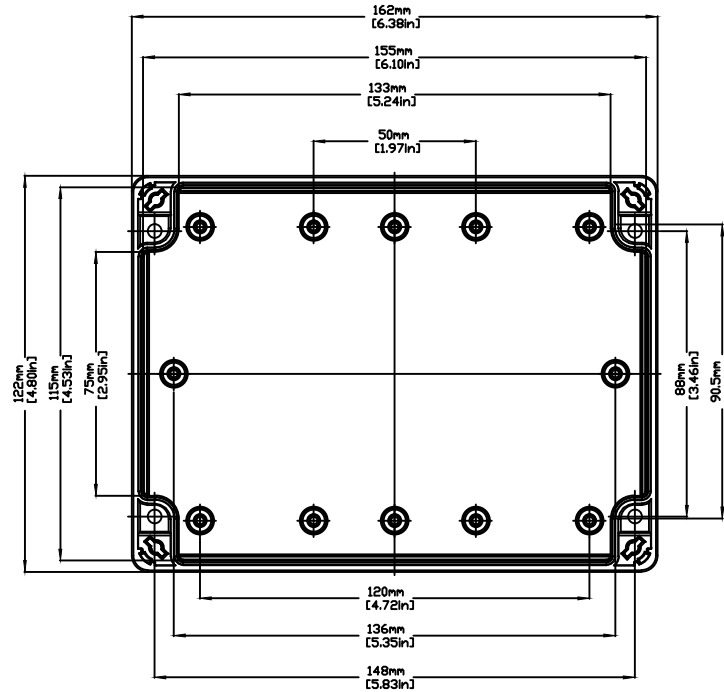


REVISIONS FOR DWG # 3EN-3IS-TG-TG1612\_9

REV	CH.NO.	DESCRIPTION	DATE	REVISED BY
-	-	ORIGINAL DESIGN	08/01/11	ROLAND G
A	1	ADDED STANDOFFS	08/30/13	ROLAND G



T=0.4mm/0.02in  
RECESS AREA FOR LABEL



UNLESS OTHERWISE SPECIFIED  
• ALL DIMENSIONS ARE IN MILLIMETERS  
• THIRD ANGLE PROJECTION

This Drawing is the property of

**Altrech Corp.**

35 Royal Road  
Flemington NJ 08822-6000  
(908) 806-9400 • Fax (908) 806-9490

AND IS A CONFIDENTIAL DISCLOSURE  
LENT WITHOUT CONSIDERATION OTHER  
THAN THE BORROWER'S AGREEMENT  
THAT IT SHALL NOT BE REPRODUCED,  
COPIED, LENT, OR DISPOSED OF  
DIRECTLY OR INDIRECTLY NOR USED  
FOR ANY PURPOSE OTHER THAN THAT  
FOR WHICH IT IS SPECIFICALLY  
FURNISHED.

TITLE: ABS/POLYCARBONATE ENCLOSURE  
TG 1612-9

DRAWN BY:  
ROLAND GYORGYPAL 08/01/2011  
CHECKED BY:  
JEFF ROYE 08/01/2011  
RELEASED BY:  
LASZLO G. 08/01/2011

DRAWING NO.:  
3EN-3IS-TG-TG1612\_9  
SCALE: -

REV.:  
-  
SHEET: 1 OF: 1

C-ITEM