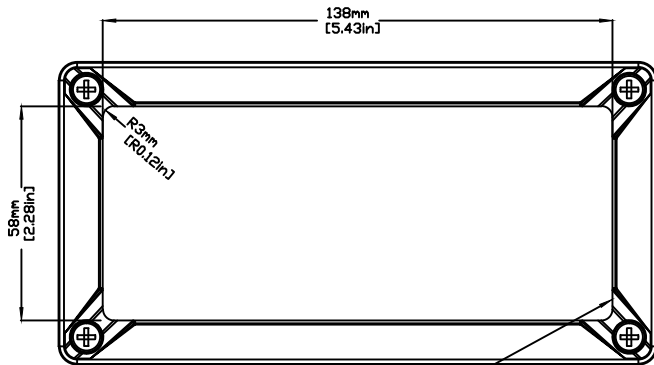
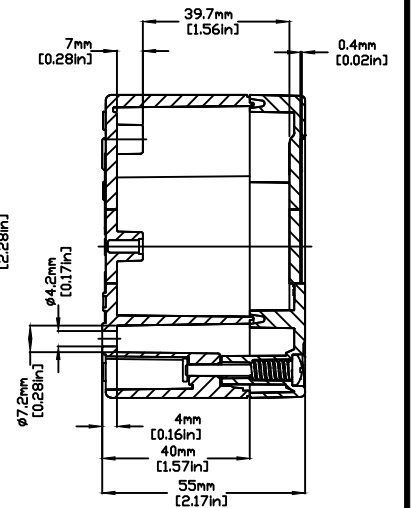
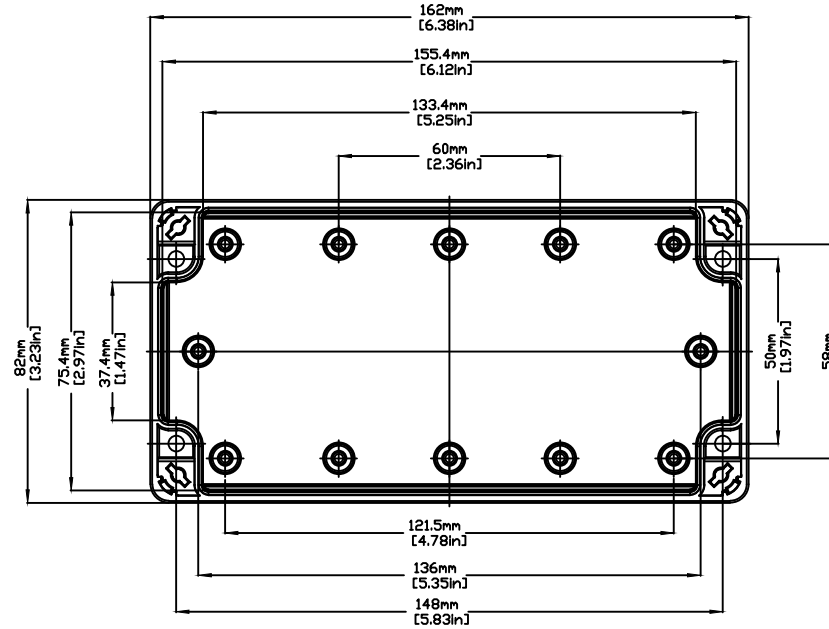


REVISIONS FOR DWG # 3EN-3IS-TG-TG1608_6

REV	CH.NO.	DESCRIPTION	DATE	REVISED BY
-	-	ORIGINAL DESIGN	08/01/11	ROLAND G
A	1	ADDED STANDOFFS	08/30/13	ROLAND G



T=0.4mm/0.02in
RECESS AREA FOR LABEL



UNLESS OTHERWISE SPECIFIED
• ALL DIMENSIONS ARE IN MILLIMETERS
• THIRD ANGLE PROJECTION

This Drawing is the property of

Altrech Corp.

35 Royal Road
Flemington NJ 08822-6000
(908) 806-9400 • Fax (908) 806-9490

AND IS A CONFIDENTIAL DISCLOSURE
LENT WITHOUT CONSIDERATION OTHER
THAN THE BORROWER'S AGREEMENT
THAT IT SHALL NOT BE REPRODUCED,
COPIED, LENT, OR DISPOSED OF
DIRECTLY OR INDIRECTLY NOR USED
FOR ANY PURPOSE OTHER THAN THAT
FOR WHICH IT IS SPECIFICALLY
FURNISHED.

TITLE: ABS/POLYCARBONATE ENCLOSURE
TG 1608-6

DRAWN BY: ROLAND GYORGYPAL	08/01/2011	DRAWING NO.:	3EN-3IS-TG-TG1608_6	REV.:	A
CHECKED BY: JEFF ROYE	08/01/2011	SCALE: -	SHEET: 1	OF: 1	
RELEASED BY: LASZLO G.	08/01/2011				

C-ITEM