

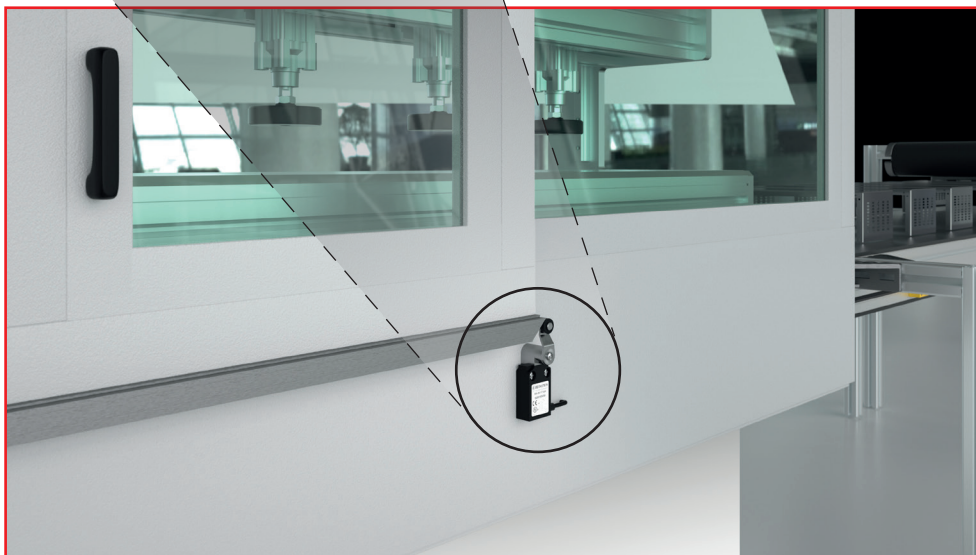


## Advantages

- Ultra-flat design (only 16mm deep)
- Fits in a wide variety of applications
- Extremely reliability
- Simple and quick installation
- Horizontal and vertical cable exits

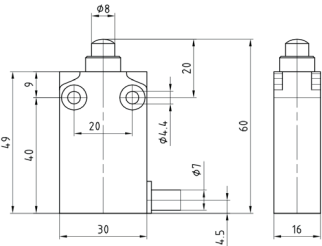
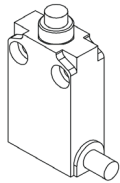
## Application Examples

- Monitoring of safety gates, hatches or protective hoods
- Position monitoring of moving parts
- Object detection in conveying technology
- End position control of components
- Position monitoring on rolling doors
- Monitoring of sliding doors



# I49 Series Limit Switches

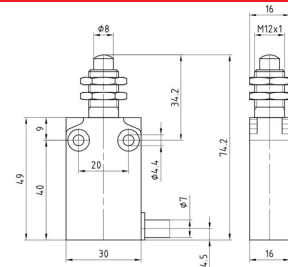
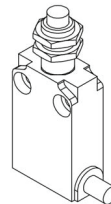
## IW



### Actuator Type

Actuator Type	Metal Plunger	
Slow Action - Horizontal Cable	608.9102.049	I49-U1Z IW
Slow Action - Vertical Cable	608.9102.059	I49-U1Z IW
Snap Action - Horizontal Cable	608.9152.048	I49-SU1Z IW
Snap Action - Vertical Cable	608.9152.058	I49-SU1Z IW

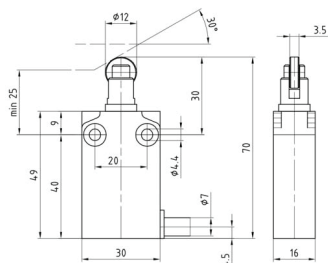
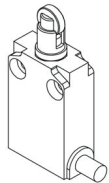
## IWF



### Actuator Type

Actuator Type	Metal Plunger	
Slow Action - Horizontal Cable	608.9102.051	I49-U1Z IWF
Slow Action - Vertical Cable	608.9102.063	I49-U1Z IWF
Snap Action - Horizontal Cable	608.9152.050	I49-SU1Z IWF
Snap Action - Vertical Cable	608.9152.062	I49-SU1Z IWF

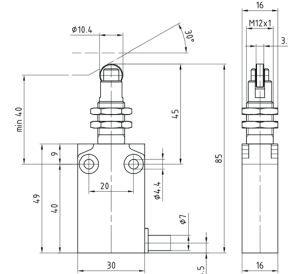
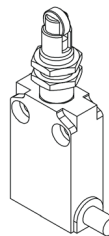
## RIW



### Actuator Type

Actuator Type	Metal Plunger	
Slow Action - Horizontal Cable	608.9117.053	I49-U1Z RIW
Slow Action - Vertical Cable	608.9117.061	I49-U1Z RIW
Snap Action - Horizontal Cable	608.9167.052	I49-SU1Z RIW
Snap Action - Vertical Cable	608.9167.060	I49-SU1Z RIW

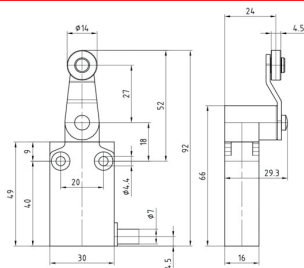
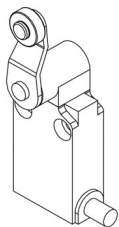
## RIWF



### Actuator Type

Actuator Type	Metal Plunger	
Slow Action - Horizontal Cable	608.9117.055	I49-U1Z RIWF
Slow Action - Vertical Cable	608.9117.065	I49-U1Z RIWF
Snap Action - Horizontal Cable	608.9167.054	I49-SU1Z RIWF
Snap Action - Vertical Cable	608.9167.064	I49-SU1Z RIWF

## AH



### Actuator Type

Actuator Type	Metal Plunger	
Slow Action - Horizontal Cable	608.9135.057	I49-U1Z AH
Slow Action - Vertical Cable	608.9135.067	I49-U1Z AH
Snap Action - Horizontal Cable	608.9185.056	I49-SU1Z AH
Snap Action - Vertical Cable	608.9185.066	I49-SU1Z AH

## Technical Information

Contact Arrangement	1NC/1NO Slow or Snap Action NC Contact Positively Driven
Connection	Prewired 3.2 Foot (1 M) cable
Rated Operating Voltage	To 240V
Utilisation/Current Rating	AC-15; 24V/10A; 240V/3A DC-13; 24V/2.8A; 125V/.22A
Switching Frequency	≤ 60/min.
Temperature Rating	-13° to +158°F (-25° to +70°C)
Protection Rating	IP67 acc. to IEC/EN 60529; Type 1 enclosure ("indoor use only") acc. to UL50
Enclosure	Double insulation, Plastic Casing
Wiring Code	NC = Black/Black; NO = Blue/Brown
Approval	UL Listed

**Learn More @**

[www.altechcorp.com/bernstein/LimitSwitches.html](http://www.altechcorp.com/bernstein/LimitSwitches.html)

Altech Corporation  
35 Royal Road  
Flemington, NJ 08822-6000  
P 908.806.9400 • F 908.806.9490  
www.altechcorp.com

Altech Corp.® 585-2000  
Printed April 2016