



Many machines require direct access to the operating or man machine interface panels to control programming and run functions. In some cases visual inspection of specific parts of the machine may also be necessary, creating the need to move the panel to a better viewing position. BERNSTEIN's Suspension Systems are designed to allow the machine operator or programmer free access to position the control or MMI panel within viewing distance of a large portion of the machine.

All the BERNSTEIN Suspension Systems feature a modular design, which allows the different length parts and fittings to be combined to create a system which will meet the customer's specific application requirements.

Bernstein offers five different systems, which are designed to accommodate different load and application requirements.

## CS-2000 SL45/60 (up to 99 lbs)

- Load Bearing Capacity up to 99 lbs. (at a 3.2 foot length)
- Simple Quick One Man Installation
- Easy to Mounting and Alignment
- Light Weight Cast Aluminum Construction
- Two Extrusion Profiles Available; IP 65 Protection Rating
- 22 Connection Fittings
- In Light Grey or Dark Grey



## CS-3000 neXt (up to 110 lbs)

- Load Bearing Capacity up to 110 lbs. (at a 3.2 foot length)
- Simple Quick One Man Installation
- Easy to Mounting and Alignment
- Light Weight Cast Aluminum Construction
- Can be used in combination with the CS-3000
- 22 Connection Fittings
- In Light Grey or Dark Grey

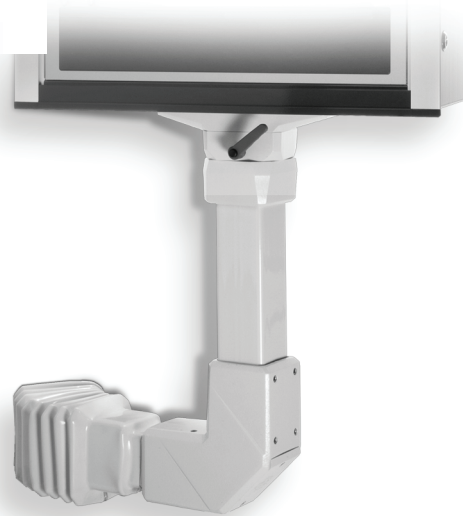
## CS-3000 (up to 275 lbs)

- Load Bearing Capacity up to 275 lbs. (at a 3.2 foot length)
- Simple Quick One Man Installation
- Easy to Mounting and Alignment
- Light Weight Cast Aluminum Construction
- Can be used in combination with the CS-3000 neXt
- 22 Connection Fittings
- In Light Grey or Dark Grey



## CS-2000 SYSTEM 80 (up to 330 lbs)

- Load Bearing Capacity up to 330 lbs. (at a 3.2 foot length)
- Simple Quick One Man Installation
- Easy to Mounting and Alignment
- Realignment without Dismantling
- Simple Cable Installations with Smooth Inner Transitions
- Cast Steel and Aluminum Components
- Bearing Free, Maintenance Free Joints and Couplings
- Clean Lines and Smooth transitions
- All Rotary Components Offer Adjustable Torque
- 20 Different Connection Fittings



## CS480NR Stainless Steel (up to 90 lbs)

- Load Bearing Capacity up to 90 lbs. (at a 3.2 foot length)
- Stainless Steel Construction
- IP 66/NEMA 4X Protection Rating
- Designed For Easy Cleaning in Wash Down Areas
- Factory Bent Tubes Available
- 12 Connection Fittings

## Custom Aluminum Control Enclosures

These custom build enclosures are made to you exact specifications.  
Available with custom front plate cutouts and locking hinged or fixed front and rear panels

### CC-3000 Series

- Up to 24" x 24" x 10"
- IP65 Protection Rating
- Choice of Colors and Surface Finishes
- Integrated Handles Available
- Fixed or Hinged Front and Rear Panels
- Solid or Hinged Split Frame Available
- Optional Keyboard Accessories
- Custom Front Panel with Internal or External Mounting



### CC-5000 Series

- Up to 40" x 40" x 13"
- Modern Functional Design
- IP65 Protection Rating
- Choice of Colors and Surface Finishes
- Integrated Handles Available
- Fixed or Hinged Front and Rear Panels
- Built In Hinged Split Frame Option
- Keyboard Accessories Available
- Custom Front Panel with Internal or External Mounting



## Learn More @

[www.altechcorp.com/bernstein/ControlEnclosures.html](http://www.altechcorp.com/bernstein/ControlEnclosures.html)

Altech Corporation  
35 Royal Road  
Flemington, NJ 08822-6000  
P 908.806.9400 • F 908.806.9490  
[www.altechcorp.com](http://www.altechcorp.com)

Altech Corp.® 550-2000  
Printed November 2015