

This section provides Instructions for installing the ASR - Soft.

The ASR – SOFT Installation Program creates directories as needed, creates files on your hard drive, and creates ASR-Soft icon on your desktop.

Note: You must have Administrator privileges on your PC in order to install or uninstall the software.

Installation on Windows® XP:

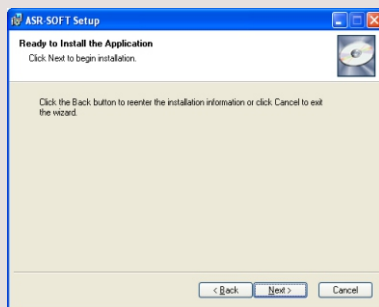
- 1 Insert the ASR-soft CD into the CD-ROM drive of your computer/laptop. The installation wizard starts automatically and a Welcome screen appears, as shown below. In case the Auto run feature is disabled in your Windows® settings, use Windows® explorer to access the 'setup.msi' file. Double-click the icon 'setup.msi' and the welcome screen appears.

If you have downloaded the folder containing the ASR-Soft Setup then the installation process has to be done manually. For this, double-click the 'setup.msi' file in the folder and continue the installation process once the Welcome screen appears.

In the Welcome screen, click the Next button to continue.



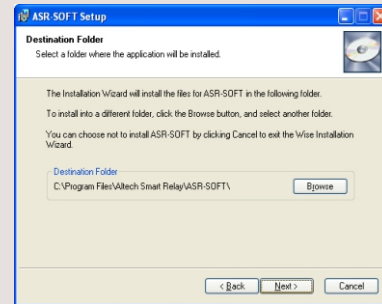
- 3 Click on "Next" to start installation.



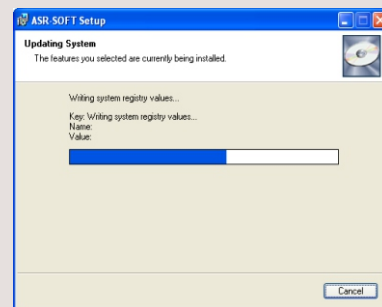
- 5 Then Driver Installation window will display. Click on "Install" to start installation.



- 2 When prompted for the destination directory as shown below, user can either select the default directory (C:\Program Files\Altech Smart Relay\ASR-SOFT) or enter another destination directory for the installation files.



- 4 A dialog box indicating the status of the progress of installation will display.



- 6 When the Installation is finished, select "Yes" to restart your PC. After this, the screen "ASR-Soft has been successfully installed" will appear on your PC and it restarts.



- 7 After your PC has restarted, you can run the ASR –SOFT.