



# INSTALLING USB DRIVERS

---

## ***Quick Guide***

In order to establish communication between the Device and PC, it is necessary to install the appropriate USB driver.

## Installation Procedure:

**Note:- Driver Installation requires Administrative Privileges on your PC.**

1. Open "USB to Serial Cable Driver" folder which contains executable from following path

For 32 bit operating system: C:\Program Files\XXXX\USB to Serial Cable Driver\CP210xVCPInstaller\_x86.exe

For 64 bit operating system: C:\Program Files(x86)\XXXX \USB to Serial Cable Driver\CP210xVCPInstaller\_x64.exe

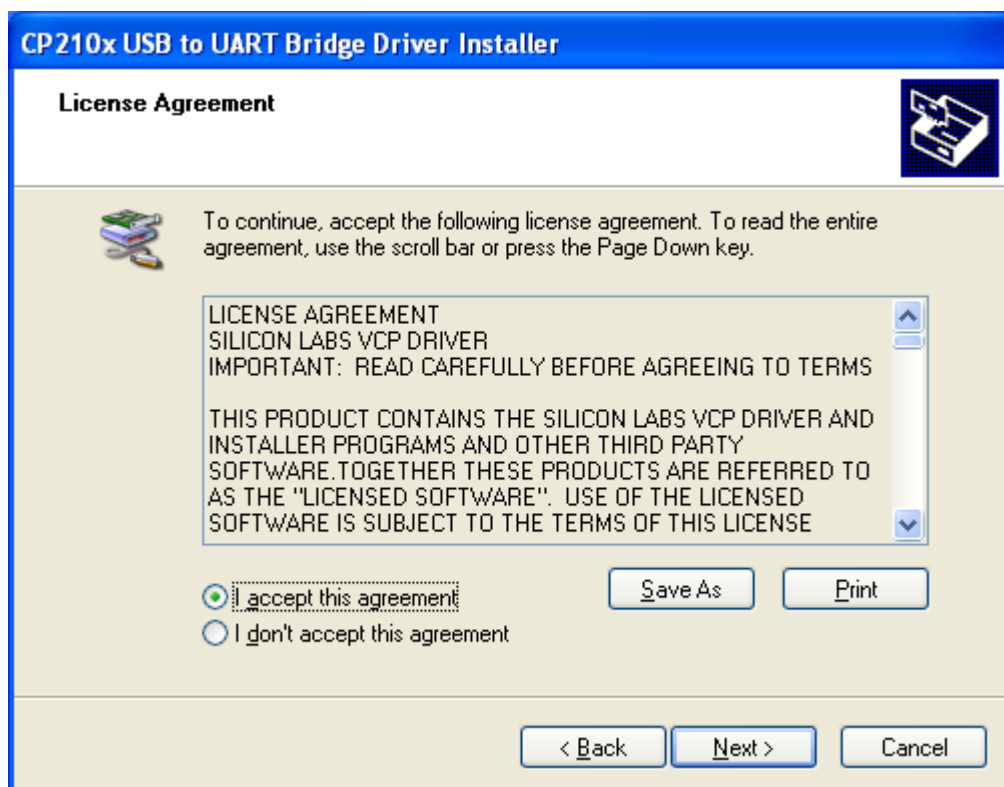
Where "XXXX" is name of Application.

**Note:** Above all paths are valid only when software is installed on Default installation path. If Default installation path is changed during installation, then go to respective installation path.

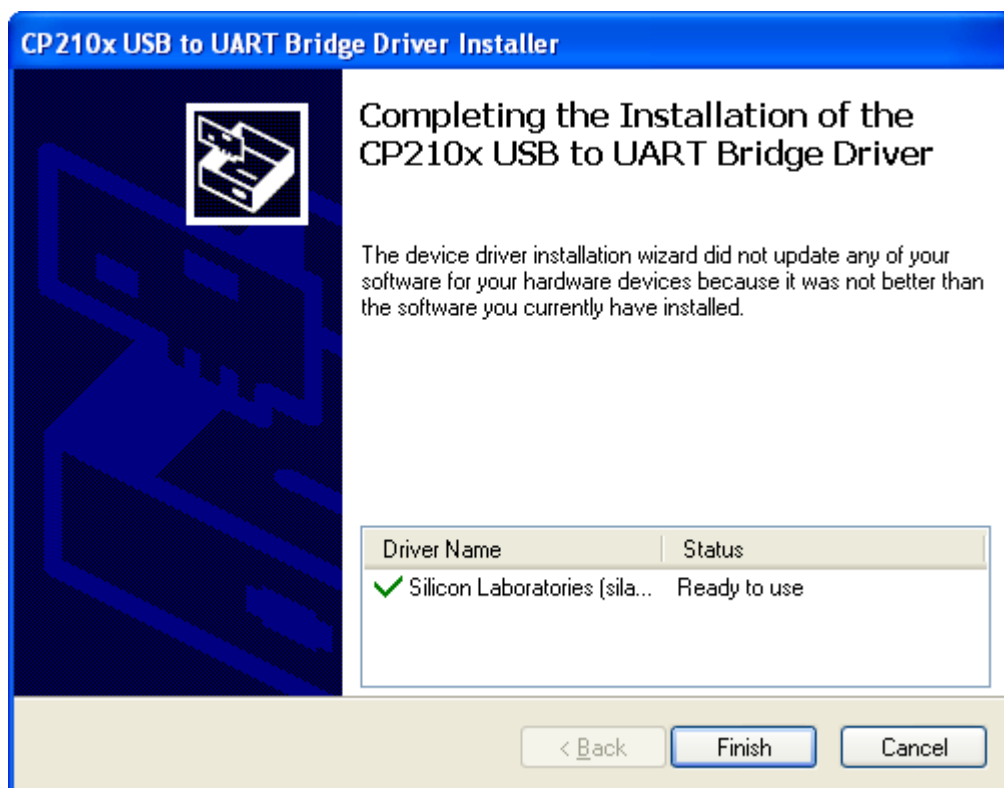
2. Double Click on the "CP210xVCPInstaller\_x86.exe" for 32 bit OR "CP210xVCPInstaller\_x64.exe" for 64 bit operating system from the USB to Serial Cable Driver folder to install USB cable driver.



3. Click on "Next" button



4. Now select the option "I accept this agreement"
5. Click on "Next" button.
6. After successful Installation of driver below window appears.



7. Click Finish to complete the installation procedure.
8. After Successfull installation of drivers, Plug the USB cable into USB port of the PC.

9. As soon as the USB cable is connected to the PC, Windows will detect the USB Cable as a new Hardware.

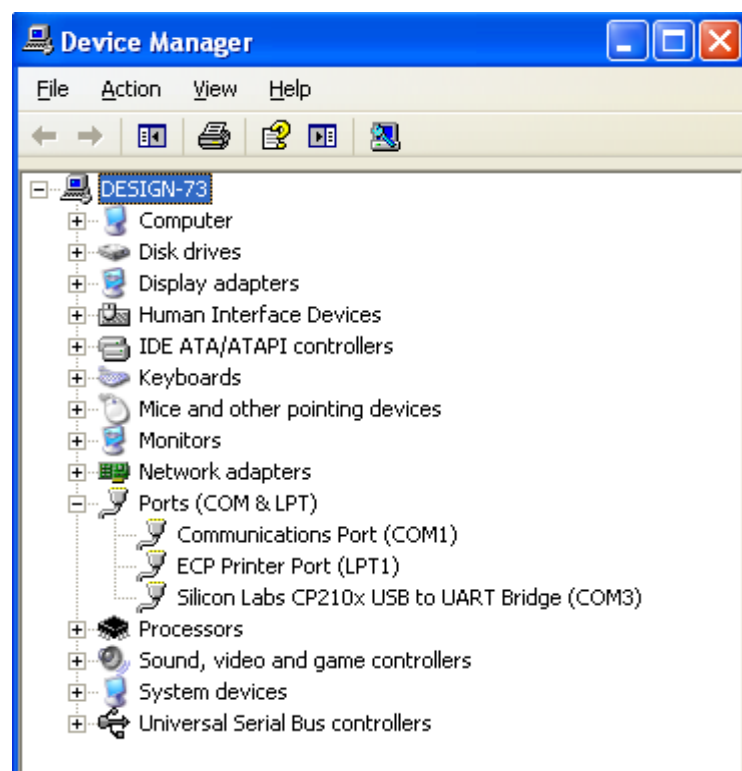


From now on, your USB cable will be automatically recognized by the operating system after being connected to the PC.

10. After driver installation is completed, confirming the driver availability and the port number is recommended.
11. Right Click on the "My Computer", then Select "Properties." System Properties screen appears as below. Click "Hardware tab and then click "Device Manager"

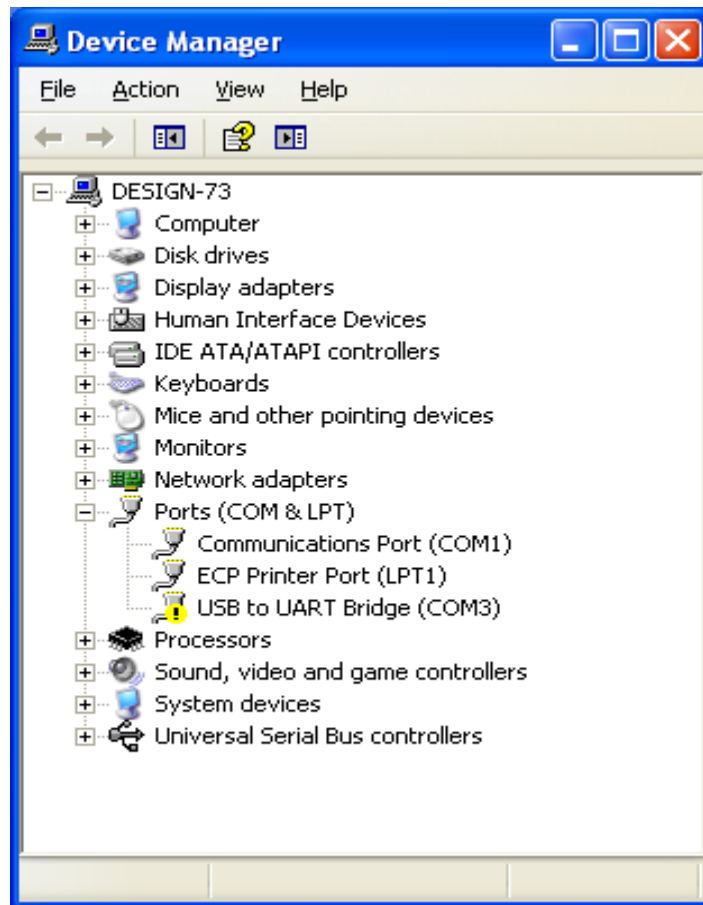


12. Device manager screen appears as shown below. Click on Ports (COM&LPT)



13. Confirm 'Silicon Labs CP210x USB to UART Bridge (COM Number)' is displayed.

14. If “!” or “x” indicator is displayed on the “Device Manger” screen, the driver may not be installed properly. Uninstall the USB driver then reinstall in such cases.



**Note:** The screenshots above were obtained in Windows XP, certain system prompts may differ in other versions of Windows, but the overall procedure will be the same.