

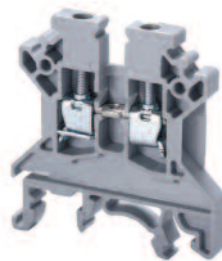
Feed-Through

Altech "U" Series Universal Rail Mounting Standard Screw Clamp Feed through terminals are the most versatile terminals for wire-to-wire connection in control, automation, instrumentation and power distribution applications. A special design feature on the flexible foot enables easy mounting and dismounting from the DIN Rail with the help of a screwdriver.

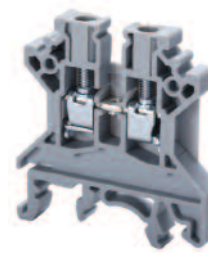
The terminals with AEx eII Ex eII can be used in a potentially explosive atmosphere which may occur in chemical and petrochemical industry. These terminals can be used in Class 1, Zone 0, 1 & 2 hazardous locations. These terminal blocks comply to En 500019.



CTS2.5U-N



CTS4U-N



Terminal Width	5 mm			6 mm		
Height x Length	45 x 43 mm			45 x 43 mm		
Stripping Length	9 mm			9 mm		
Insulation Material	Polyamide 6.6			Polyamide 6.6		
Type of Connection	2 screw clamps & 1 tapped hole for cross connect.			2 screw clamps & 1 tapped hole for cross connect.		
Approvals						
Wire Range	22-12 AWG	0.5-2.5 sq.mm	22-14 AWG	22-10 AWG	0.5-4 sq.mm	22-10 AWG
Voltage Rating	600 V	800 V	600 V	600 V	800 V	600 V
Current Rating	25 A	24 A	20 A	35/40 A*	32 A	35/40A*
Torque	7 lb-in	0.4 Nm	7 lb-in	7 lb-in	0.5 Nm	7 lb-in

Other Approvals

Cat. No.	Std. Pk.	Cat. No.	Std. Pk.
----------	----------	----------	----------

Terminal Block				
End Plate	EP2.5/4UN	50	EP2.5/4UN	50
Isolation Partition	PP2.5/4UN	50	PP2.5/4UN	50
Separator Plate	SP2.5/4UN	100	SP2.5/4UN	100



End Stop for ordering information refer to page 72	CA702	50	CA702	50
	CA802	50	CA802	50

Internal Jumper	2 pole	CA721/2	100	CA722/2	100
	3 pole	CA721/3	50	CA722/3	50
	4 pole	CA721/4	50	CA722/4	50
	10 pole	CA721/10	10	CA722/10	10
	100 pole	CA721/100	10	CA722/100	10

Insulated Internal Jumper	2 pole	CA741/2	100	CA742/2	100
	3 pole	CA741/3	50	CA742/3	50
	4 pole	CA741/4	50	CA742/4	50
	10 pole	CA741/10	10	CA742/10	10
	100 pole	CA741/100	10	CA742/100	10

Current Bars	2 pole	CA703/01	100	CA703/1	100
	3 pole	CA704/01	100	CA704/1	100
	4 pole	CA705/01	100	CA705/1	100
	10 pole	CA731/10	100	CA732/10	100
	10 pole (breakable)	—	—	CA732/10-A	100
	100 pole	CA731/100	10	CA732/100	10

Shorting Sleeve & Screw	CA 707/S/Q/01	100	CA707/S/Q/01	100
-------------------------	---------------	-----	--------------	-----

External Jumper	2 pole	CA717/2	100	CA713/2	100
	3 pole	CA717/3	100	CA713/3	100
	4 pole	CA717/4	100	CA713/4	50
	10 pole	CA717/10	25	CA713/10	25

Marking Tags	MT5	100	MT6	100
	MT6F	100	MT6F	100

COLOR BLOCKS
(other than grey standard)

When ordering please add color suffix to Cat. No.

Example: CTS2.5U-N/R

Color	Ordering Suffix
Red	R
Blue	BU
Black	BL
Orange	O
Green	G
Yellow	Y
White	W
Beige	BG
Dark Brown	DB

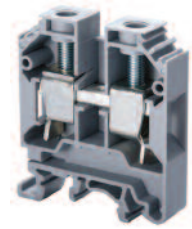
* 35A with one No. 10 AWG and 40A with two No. 12 AWG wires.

CTS6U

CTS10U

CTS16U

CTS25U



8 mm

47 x 43 mm

12 mm

Polyamide 6.6

2 screw clamps & 1 tapped hole for cross connect.

22-8 AWG	1.5-6 sq.mm	22-8 AWG
600 V	750 V	600 V
50 A	41 A	50 A
9 lb-in	0.8 Nm	14 lb-in



Cat. No.	Std. Pk.
CTS6U	50
EP6/10U	50
PP6/10U	50
SP6/10U	100



CA702	50
CA802	50

CA723/2	100
CA723/3	50
CA723/4	50
CA723/10	10

CA743/2	100
CA743/3	50
CA743/4	50
CA743/10	10

CA703/2	100
CA704/2	100
CA705/2	100
CA733/10	100

CA707/S/Q/1	100
CA710/2	100
CA710/3	100
CA710/4	100
CA710/10	25

MT8	100
MT6F	100

10 mm

47 x 43 mm

12 mm

Polyamide 6.6

2 screw clamps & 1 tapped hole for cross connect.

22-6 AWG	1.5-10 sq.mm	16-6 AWG
600 V	750 V	600 V
65 A	57 A	65 A
14 lb-in	1.2 Nm	14 lb-in



Cat. No.	Std. Pk.
CTS10U	50
EP6/10U	50
PP6/10U	50
SP6/10U	100



CA702	50
CA802	50

CA724/2	100
CA724/3	50
CA724/4	50
CA724/10	10

CA744/2	100
CA744/3	50
CA744/4	50
CA744/10	10

CA703/3	100
CA704/3	100
CA705/3	100
CA734/10	100

CA707/S/Q/1	100
CA718/2	100
CA718/3	50
CA718/4	50
CA718/10	25

MT10	100
MT6F	100

12 mm

47 x 43 mm

16 mm

Polyamide 6.6

2 screw clamps & 1 tapped hole for cross connect.

22-6 AWG	2.5-16 sq.mm	20-4 AWG
600 V	800 V	600 V
70 A	76 A	85 A
14 lb-in	1.2 Nm	14 lb-in



Cat. No.	Std. Pk.
CTS16U	50
EP6/10U	50
PP6/10U	50
SP6/10U	100



CA702	50
CA802	50

CA751/2	50
CA751/3	50
CA751/4	50
CA751/10	10

CA761/2	50
CA761/3	50
CA761/4	50
CA761/10	10

CA703/8	100
CA704/8	100
CA705/8	100
CA739/10	100

CA707/S/Q/5	100
-------------	-----

MT12	100
MT6F	100

12 mm

56 x 49 mm

18 mm

Polyamide 6.6

2 screw clamps & 1 tapped hole for cross connect.

12-2 AWG	6-25 sq.mm	14-2 AWG
600 V	800 V	600 V
115 A	101 A	115 A
25 lb-in	2.0 Nm	25 lb-in



Cat. No.	Std. Pk.
CTS25U	50
EP25U	50
PP25UN	50



CA702	50
CA802	50

CA725/2	50
CA725/3	25
CA725/4	25
CA725/10	10

CA745/2	50
CA745/3	25
CA745/4	25
CA745/10	10

CA703/4	100
CA704/4	100
CA705/4	100
CA735/10	100

CA707/S/Q/2	100
-------------	-----

MT12	100
MT6F	100