

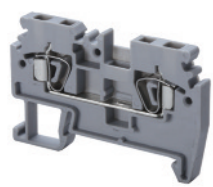
Feed-Through & Multi-Connection Spring Clamp

FEED-THROUGH

These terminal blocks offer a time saving alternative to the popular screw clamp connection. They can be mounted on 35 mm DIN rails. Insulated push-in type jumpers offer a quick and shock proof solution for most cross-connection applications.

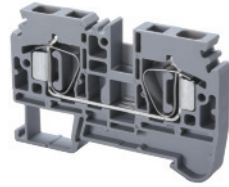


CSC2.5T



CSC4T

CSC6T



Terminal Width	5 mm	6 mm	8 mm
Height x Length	36 x 58 mm	42 x 65 mm	45 x 72 mm
Stripping Length	11 mm	15 mm	15 mm
Insulation Material	Polyamide 6.6	Polyamide 6.6	Polyamide 6.6
Type of Connection	2 spring clamps & 2 slots for interconnection	2 spring clamps & 2 slots for interconnection	2 spring clamps & 2 slots for interconnection

MULTI-CONNECTION

Altech Multiple connection Spring Clamp terminals offer a reliable solution for problems posed by multiple voltage connections. The terminal eliminates conventional method of cross connection / looping, saving additional space.

The terminals provide of further multiplication connections through bridging. The Multiple Connection Terminal Blocks can even be bridged to Standard Feed Through Spring Clamp Terminal Block of respective wire size (CSC2.5T / CSC4T / CSC6T).

Approvals									
Wire Range	22-12 AWG	0.2-2.5 sq.mm	22-12 AWG	22-12AWG	0.2-4 sq.mm	22-12 AWG	22-8AWG	0.2-6sq.mm	22-8AWG
Voltage Rating	600 V	800 V	600 V	600 V	800 V	600 V	600 V	800 V	600 V
Current Rating	25 A	24 A	25 A	25 A	32 A	25 A	50 A	41 A	50 A
Other Approvals									

	Cat. No.	Std. Pk.	Cat. No.	Std. Pk.	Cat. No.	Std. Pk.
Terminal Block	CSC2.5T	100	CSC4T	100	CSC6T	50
End Plate	EPCSC2.5T	50	EPCSC4T	50	EPSC6T	50
Partition Plate	PPCSC2.5T	50	PPCSC4T	50	PPCSC6T	50
DIN Rail for ordering information refer to pages 90-91						
End Stop for ordering information refer to page 92	CA103 CA702 CA802	50 50 50	CA103 CA702 CA802	50 50 50	CA103 CA702 CA802	50 50 50
Jumpers Adjacent Alternate	CA801/1 CA801/1-3	100 100	CA801/2 CA801/2-3	100 100	CA801/3 CA801/3-3	100 100
Push in type wire jumper	CA901/1	100	CA901/2	100	CA901/3	100
Marking Tags	MT5	100	MT6	100	MT8	100

COLOR BLOCKS
(other than standard grey)

When ordering please add color suffix to Cat. No.

Example for color Red: **Cat.No./R**

Color	Ordering Suffix	
Red	R	
Yellow	Y	
Blue	BU	
Green	G	

Consult Altech for availability.

Orange	O	
Beige	BG	
Dark Brown	DB	
Black	BL	
White	W	