

Material:

- Polyamide 66

Technical properties:

- Easy and tight mounting
- Special click-in system
- Grasps from the outside
- Gray available

- Conduit can be rotated within the mounting gland
- Halogen free

Applications:

- All fields using conduit

Mounting instructions:

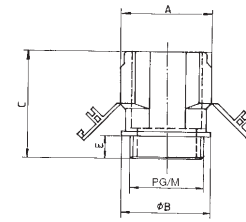
Insert the conduit with a short twist all the way into the end of the SEM conduit gland.

PROTECTION*
IP54 / **IP67** **
 RATING



Temperature Range PA 6
 -25 to 100°C (-13 to 212°F)

Thread	Fits for NW	E mm	SW mm	A mm	B mm	C mm	Cat. No. Black	Std. Pk.
PG								
PG 7	8.5	10	15	20.2	16	39	3800075	50
PG 7	12	10	19	24	21	40.3	3802070	50
PG 9	10	10	18	21.3	20	39.5	3800091	50
PG 9	12	10	19	24	21	40.3	3802091	50
PG 11	12	10	19	24	20.8	40.5	3800113	50
PG 11	13	10	20	24.8	22	40	3800114	50
PG 13.5	10	7	22	26.7	23.6	40	3802132	50
PG 13.5	14	10	22	26.7	23.6	40	3800130	50
PG 16	17	10	26	29.6	28.9	40.6	3800164	50
PG 21	22	11	30	35	34	46	3800211	25
PG 21	23	11	32	37.6	35	47.7	3800210	25
PG 29	29	12	41	45.2	45	53.8	3800296	20
PG 36	37	12	50	54	56.8	57.4	3800369	10
PG 48	50	12	64	65.3	72	57.5	3800482	5
Metric								
M 12 x 1.5	10	10	18	21.9	20	40	3803410	50
M 16 x 1.5	10	15	18	21.8	19.8	45	3803413	50
M 16 x 1.5	13	15	19	24	20.9	40	3803412	50
M 20 x 1.5	17	15	26	30	29	40	3803418	50
M 25 x 1.5	22	15	30	34.7	33.8	50	3803434	25
M 25 x 1.5	23	15	30	38.2	35	52	3803424	25
M 32 x 1.5	29	12	41	45	44.6	54	3803429	20


according to EN 60 423

M 12 x 1.5	M 12	11	16	20.2	16	39	3803120	50
M 16 x 1.5	M 16	10	19	23.9	20.3	41	3803163	50
M 20 x 1.5	M 20	10	24	28	25.5	41	3803201	25
M 25 x 1.5	M 25	11	30	33.3	32.2	48	3803252	50
M 32 x 1.5	M 32	10	41	45.2	45	54	3803325	20

Notes:

* Without sealing ring

** With sealing ring and flat packing, see pages 51 & 47.