

# Cable Gland / Standard Straight-Through - Polyamide

## Material:

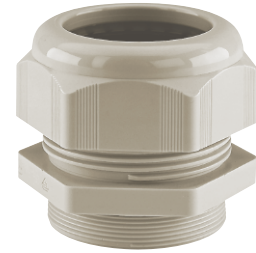
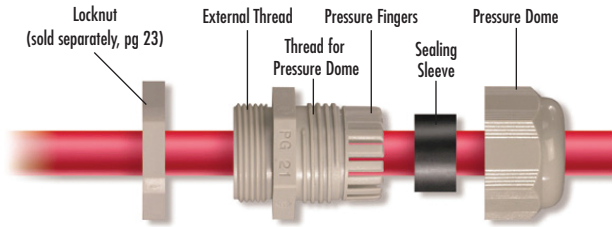
- Body: Polyamide 6
- Seal: Neoprene

## Technical properties:

- Maximum strain relief through clamping range
- IP68 achieved without seal rings (PG and metric only)
- Trapezoidal thread with high torque guarantees tight and permanent fit of the dome nut
- Gas- and watertight

## Applications:

- Machines and devices



Temperature Range	
<b>PA6</b>	<b>Neoprene</b>
-25 to 100°C (-13 to 212°F)	-25 to 100°C (-13 to 212°F)



Metric Only



E184471

## PG Thread

Outer thread	Clamping range mm	Cat. No. Light Grey	Cat. No. Black	Std. Pk.
PG 7	1.5-5	5309107	5309207	100
PG 7	2.5-6.5	5308707	5308507	100
PG 9	1.5-6	5309109	5309209	50
PG 9	2.5-8	5308709	5308509	50
PG 11	2-7	5309111	5309211	50
PG 11	3.5-10	5308711	5308511	50
PG 13.5	3-9	5309113	5309213	50
PG 13.5	5-12	5308713	5308513	50
PG 16	5-12	5309116	5309216	50
PG 16	7-14	5308716	5308516	50
PG 21	7-16	5309121	5309221	25
PG 21	9-18	5308721	5308521	25
PG 29	11-21	5309129	5309229	20
PG 29	14-25	5308729	5308529	20
PG 36	13-26	5309136	5309236	10
PG 36	18-32	5308736	5308536	10
PG 42	17-31	5309142	5309242	5
PG 42	24-38.5	5308737	5308537	5
PG 48	26-39	5309148	5309248	5
PG 48	35-48	5308738	5308538	5

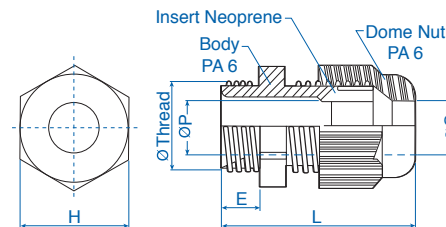
## NPT Thread

NPT	Clamping range mm	Cat. No. Light Grey	Cat. No. Black	Std. Pk.
NPT 3/8"	1.5-6	5308904	5308924	50
NPT 3/8"	2.5-8	5308900	5308920	50
NPT 1/2"	3-9	5308905	5308925	50
NPT 1/2"	5-12	5308901	5308921	50
NPT 3/4"	7-16	5308906	5308926	20
NPT 3/4"	9-18	5308902	5308922	20
NPT 1"	11-21	5308907	5308927	20
NPT 1"	14-25	5308903	5308923	20

## Metric Thread\*

Metric	Clamping range mm	Cat. No. Light Grey	Cat. No. Black	Std. Pk.
M 12 x 1.5	1.5-5	5309612	5309712	100
M 12 x 1.5	2.5-6.5	5308950	5308940	100
M 16 x 1.5/9	1.5-6	5309615	5309715	50
M 16 x 1.5/11	2-7	5309616	5309716	50
M 16 x 1.5/9	2.5-8	5308958	5308948	50
M 16 x 1.5/11	3.5-10	5308951	5308941	50
M 20 x 1.5/13	3-9	5309619	5309719	50
M 20 x 1.5/16	5-12	5309620	5309720	50
M 20 x 1.5/13	5-12	5308959	5308949	50
M 20 x 1.5/16	7-14	5308952	5308942	50
M 25 x 1.5/16	5-12	5309624	5309724	50
M 25 x 1.5/21	7-16	5309625	5309725	25
M 25 x 1.5/16	7-14	5308960	5308962	50
M 25 x 1.5/21	9-18	5308953	5308943	25
M 32 x 1.5	11-21	5309632	5309732	20
M 32 x 1.5	14-25	5308954	5308944	20
M 40 x 1.5	13-26	5309640	5309740	10
M 40 x 1.5	18-32	5308955	5308945	10
M 50 x 1.5	17-31	5309650	5309750	5
M 50 x 1.5	24-38.5	5308956	5308946	5
M 63 x 1.5	26-39	5309663	5309763	5
M 63 x 1.5	35-48	5308957	5308947	5

Thread Size	H mm	E mm	Dimensions			ØP mm	ØThread mm
			L mm	ØC mm	ØP mm		
PG7	15	8	32	6.7	6.8	12.5	
PG9	19	8	35	8.5	8.7	15.2	
PG11	22	8	37	10.5	10.5	18.6	
PG13.5	24	9	39	12.5	12.5	20.4	
PG16	27	10	43	14.5	14.5	22.5	
PG21	33	11	50	18.5	18.5	28.3	
PG29	42	11	53	25.5	25.5	37.0	
PG36	53	13	65	32.5	32.5	47.0	
PG42	60	13	68	39.0	39.0	54.0	
PG48	70	14	70	48.5	48.5	59.3	
NPT 3/8	19	11	38	8.5	8.7	17.1	
NPT 1/2	24	14	44	12.5	12.5	21.2	
NPT 3/4	33	15	54	18.5	18.5	26.7	
NPT 1	42	18	60	25.5	25.5	33.3	
M12x1.5	15	8	32	6.7	6.8	12.0	
M16x1.5/9	19	10	37	8.5	8.5	16.0	
M16x1.5/11	22	10	39	10.5	10.5	16.0	
M20x1.5/13	24	10	40	12.5	12.5	20.0	
M20x1.5/16	27	10	43	14.5	14.5	20.0	
M25x1.5/16	27	10	45	14.5	14.5	25.0	
M25x1.5/21	33	10	49	18.5	18.5	25.0	
M32x1.5	42	10	52	25.5	25.5	32.0	
M40x1.5	53	10	62	32.5	32.5	40.0	
M50x1.5	60	12	67	39.0	39.0	50.0	
M63x1.5	70	12	68	48.5	48.5	63.0	



\* Extended thread available consult Altech