



Interface Relays I1-T Triac Output (1.2A 1/NO)

Relays with triac output 1,2 A / 400 V AC
35 mm DIN rail mounting, EN 50022; screw terminals 0.2 - 4 mm²
Interconnection strips type I1C-20 available

Triac - output

Max. switching voltage	AC	400 V
Min. switching voltage	AC	20 V
Rated load	AC 1	1,2 A / 400 V AC
Min. switching current		8 mA
Non-rep. surge current		30 A t=20 ms
Rated current		1,2 A
I ² t for fusing		5,1 A ² s t=1-10 ms
dI/dt		50 A/μs
dV/dt		40 V/μs
R _{th} junction to ambient		70 °C/W

Input specifications

Rated voltage	DC	5...32 V
	AC/DC	24-230 V
Turn-off voltage		AC: ≥ 0.2 U _n DC: ≥ 0.1 U _n
Rated power consumption		0,3 W 5...32 V DC at 24 V
		0,3 W/V A 24 V AC/DC
		1,6 W/V A 230 V AC/DC

Insulation

Insulation category	C250
Insulation rated voltage	600 V AC
Rated insulation voltage I/O	4 000 V AC

General data

Operating time	10 ms max. - zero turn-on
Release time	10 ms max.
Dimensions (L x W x H)	80 x 6,2 x 93,8 mm
Weight	40 g
Ambient temperature:	
Ä storing	-40...+70 °C
Ä operating	-40...+55 °C
Protection category	IP 20

Interface Relays I1-T Triac Output (1.2A 1/NO)

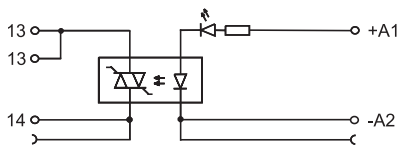
Coil data

Table 2

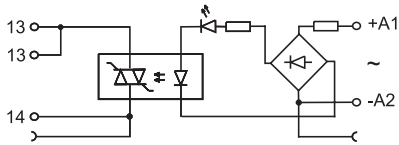
Part No.□	Rated Voltage (U _n)	
I1-T-D032R□	1.2A/400VAC□	5...32VDC Coil
I1-T-U024R□	1.2A/400VAC□	24VAC/DC Coil
I1-T-U230R□	1.2A/400VAC□	230VAC/DC Coil

Connection diagrams

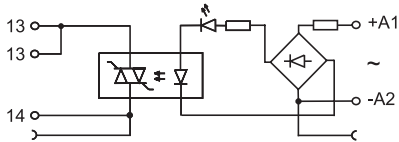
I1-T-D032R



I1-T-U024R



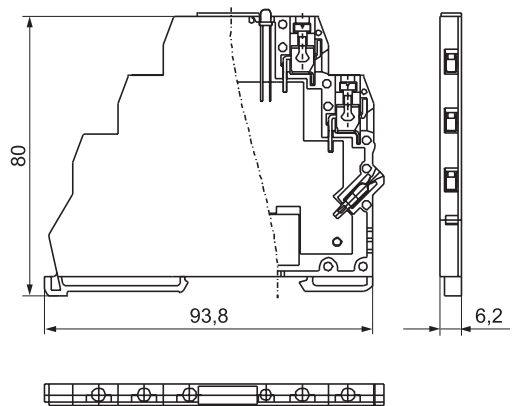
I1-T-U230R



Ordering codes

See Input data - Table 2

Dimensions



Mounting

Relays I1-T are designed for mounting on 35 mm DIN rail mount, EN 50022.

Interconnection strip type I1C-20 for bridging of common outputs and inputs available in the following colors: red I1C-20RD, black I1C-20BK and blue I1C-20BL.

