

Altech Corp.®

Quality System
Quality Endorsed Company

*Serving the Automation
& Control Industry
since 1984.*



Plug/ Cable

Receptacle/ Panel

Receptacle/ Wall

Connector/ Cable

Inlet/ Panel

Inlet/ Wall



P i n & S l e e v e D e v i c e s

PIN & SLEEVE DEVICES

Altech's line of industrial plugs and sockets are manufactured by ABL Sursum, a company well known in Europe for its quality electrical products. This major manufacturer combines the elements of good design, high quality, safety, ease of installation and competitive cost. The pin and sleeve devices are manufactured to EN 60309 Part 1 and 2: IEC 60309. Their rugged construction in polyamide 6 material provides good anti-tracking properties and high resistance to aggressive industrial use.

In accordance with the Standard's requirements, these devices are color coded to provide positive voltage and frequency matching and external key-ways ensure correct alignment of contact pins. The position of the ground pin relative to the socket's key-way are designated as a clock hour position.

The ground terminal also has a larger diameter than the contacts, making it impossible to install it in an IEC 60309 device with a different voltage rating.

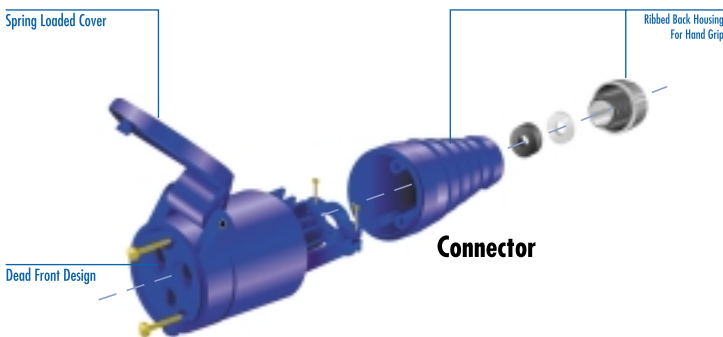
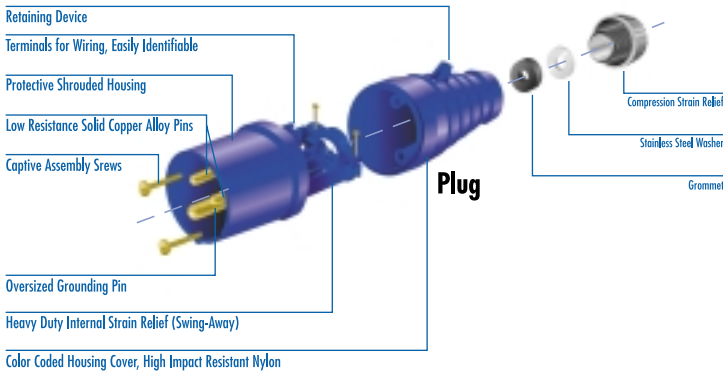
The shrouded housing made of high impact nylon material protects the contacts from physical abuse and safeguards against touching live parts when partially engaged.

All terminals are clearly marked in both IEC 309 and North American Standards.

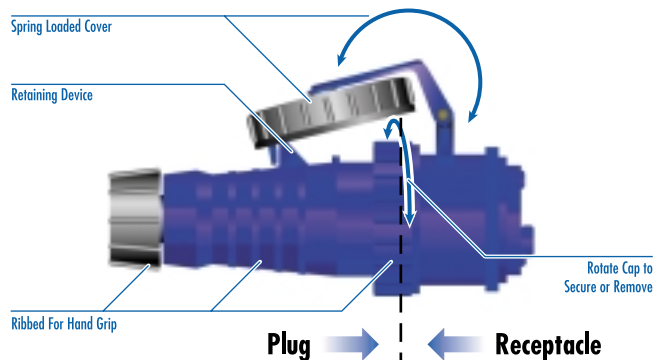
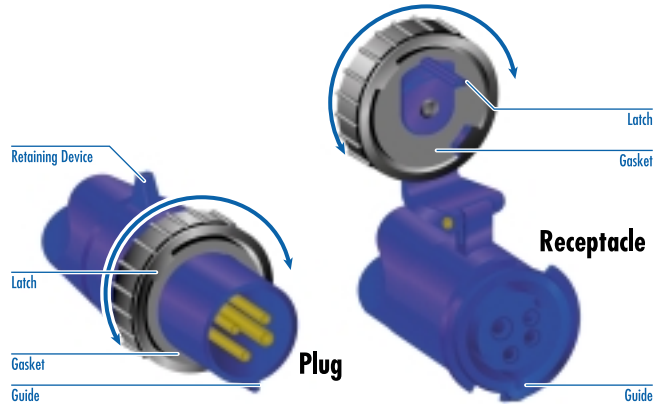
ABL 17 features include:

- High Impact and Abrasion Resistance
- Resistant to oil, petrol, most acids and alkalines
- Temperature Range -30°C to 140°C
- Electrical Rating up to 125A/500V
- Excellent Anti-Tracking
- Bichromate Coated Screws
- All screws captive
- Grooved body improves hand grip
- Insulated Cable Clamp device
- Maximum wiring space
- Hinged Cable Clamp for easy wiring
- Terminals clearly marked
- All screws are accessible from one side
- Back housing is ribbed to enhance hand grip.
- Retaining catch is used to hold engaged devices together.
- Cable gland assembly seals cable entry and provides extra strain relief reducing stress on internal components.

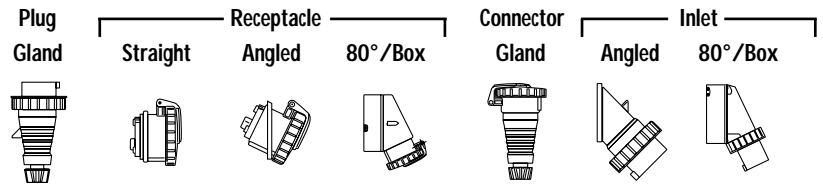
IP44



IP67



Pin and Sleeve Devices Ordering Information - Watertight IP 67

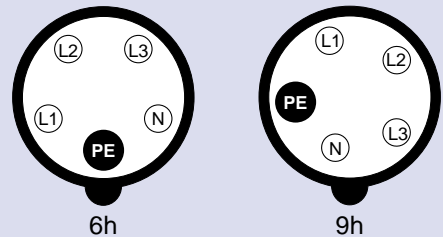


Ground Pin	IP67 Poles	Amps	Voltage	Color	Plug Gland	Receptacle			Connector Gland	Inlet	
						Straight	Angled	80°/Box		Angled	80°/Box
4h	2P/3W	20	125	YELLOW	S31.15A	F31.18A	F31.15A	D 31.17	K31.15A	---	---
6h	2P/3W	20	250	BLUE	S31.25A	F31.28A	F31.25A	D 31.27	K31.25A	---	---
7h	2P/3W	20	480	RED	S31.55A	F31.58A	F31.55A	---	K31.55A	---	---
12h	3P/4W	20	125/250	ORANGE	S41.65A	F41.68A	F41.65A	D 41.67	K41.65A	---	---
9h	3P/4W	20	250	BLUE	S41.25A	F41.28A	---	D 41.27	K41.25A	---	---
7h	3P/4W	20	480	RED	S41.55A	F41.58A	---	D 41.57 A	K41.55A	---	---
7h	3P/4W	20	500	BLACK	S 41.55	F 41.58	---	D 41.57	K 41.55	---	---
9h	4P/5W	20	120/208	BLUE	S51.25A	F51.28A	F51.26A	D 51.27	K51.25A	A51.25A	---
7h	4P/5W	20	277/480	RED	S51.55A	F51.58A	F51.56A	---	K51.55A	A51.55A	---
7h	4P/5W	20	500	BLACK	S 51.55	F 51.58	F 51.56	---	K 51.55	A 51.55	---
4h	2P/3W	30	125	YELLOW	S32.15A	F32.18A	---	D 32.17	K32.15A	---	---
6h	2P/3W	30	250	BLUE	S32.25A	F32.28A	---	D 32.27	K32.25A	---	---
7h	2P/3W	30	480	RED	S32.55A	F32.58A	---	---	K32.55A	---	---
12h	3P/4W	30	125/250	ORANGE	S42.65A	F32.68A	---	---	K32.65A	---	---
9h	3P/4W	30	250	BLUE	S42.25A	F42.28A	---	D 42.27	K42.25A	---	---
7h	3P/4W	30	480	RED	S42.55A	F42.58A	---	D 42.57A	K42.55A	---	---
7h	3P/4W	30	500	BLACK	S 42.55	F 42.58	---	D42.57	K42.55	---	---
9h	4P/5W	30	120/208	BLUE	S52.25A	F52.28A	F52.26A	D52.27	K52.25A	A52.25A	---
7h	4P/5W	30	277/480	RED	S52.55A	F52.58A	F52.56A	---	K52.55A	A52.55A	---
7h	4P/5W	30	500	BLACK	S52.55	F 52.58	F 52.56	---	K 52.55	A 52.55	---
9h	3P/4W	60	250	BLUE	S43.25A	---	F43.26A	D 43.27	K43.25A	---	G 43.25
7h	3P/4W	60	480	RED	S43.55A	---	F43.56A	D 43.57A	K43.55A	---	G 43.55A
7h	3P/4W	60	500	BLACK	S 43.55	---	F 43.56	D 43.57	K 43.55	---	G 43.55
9h	4P/5W	60	120/208	BLUE	S53.25A	F 53.28A	F53.26A	D 53.27	K53.25A	A53.25A	G 53.25
7h	4P/5W	60	277/480	RED	S53.55A	F 53.58A	F53.56A	---	K53.55A	A53.55A	---
7h	4P/5W	60	500	BLACK	S 53.55	---	F 53.56	---	K 53.55	A 53.55	---
12h	3P/4W	100	125/250	ORANGE	S44.65A	---	F44.67A	---	K44.65A	---	---
9h	3P/4W	100	250	BLUE	S44.25A	---	F44.27A	D 44.27	K44.25A	---	---
7h	3P/4W	100	480	RED	S44.55A	---	F44.57A	D 44.57A	K44.55A	---	---
7h	3P/4W	100	500	BLACK	S 44.55	---	F 44.57	D 44.57	K 44.55	---	---
9h	4P/5W	100	120/208	BLUE	S54.25A	---	F54.27A	D 54.27	K54.25A	---	G 54.25
7h	4P/5W	100	277/480	RED	S54.55A	---	F54.57A	---	K54.55A	---	---
7h	4P/5W	100	500	BLACK	S 54.55	---	F 54.57	---	K 54.55	---	---

COLOR CODING AND GROUND PIN POSITIONS

Pin and Sleeve devices are color coded to provide positive voltage and frequency matching and external key-ways ensure correct alignment of contact pins. The position of the ground pin relative to the socket's key-way are designated as a clock hour position.

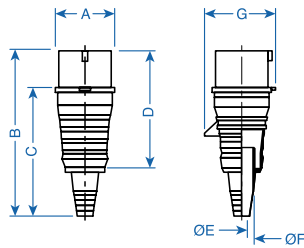
The ground terminal also has a larger diameter than the contacts, making it impossible to install in an IEC 60309 device with a different voltage rating.



Front view of receptacle/connector to contact barrier

Note: Light typeface signifies 30 piece initial minimal order, however consult Altech for current status on this requirement.

Plug, Vinyl Sleeve, IP44 (S_ _ _ 0A)

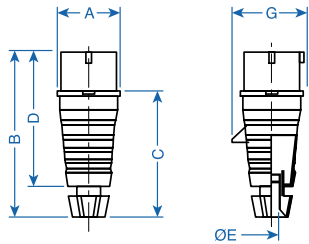


Dimensions

Wires Amp. (A)	A	B	C	D	ØE	ØF	G	
5	20	62	181	144.5	128	7	17	73.5
5	30	70	202	156.5	143.5	10	24	86.5
4	20	56.5	172.5	136	119.5	7	17	68.5
4	30	65	202	156.5	143.5	10	24	78.5
3	20	48.5	161.5	125	112.5	6	15	58
3	30	65	202	156.5	143.5	10	24	78.5

Note: All dimensions are shown in millimeters. To convert to inches, divide by 25.4.

Plug, Cable Gland, IP44 (S_ _ _ 1A)

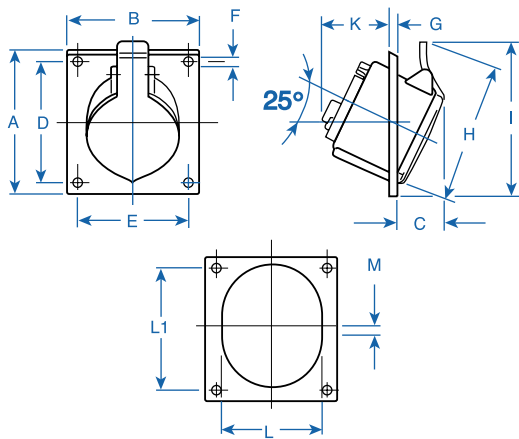


Dimensions

Wires Amp. (A)	A	B	C	D	ØE	G	
5	20	62	156	119.5	128	17	73.5
5	30	70	175.5	130	143.5	21.5	86.5
5	60	102	271	204.5	235	38	99.5
4	20	56.5	147.5	111	119.5	17	68.5
4	30	65	175.5	124	143.5	21.5	78.5
4	60	102	271	204.5	235	38	99.5
3	20	48.5	135	98.5	112.5	15	58
3	30	65	175.5	124	143.5	21.5	78.5

Note: All dimensions are shown in millimeters. To convert to inches, divide by 25.4.

Receptacle, Panel Mount, Angled, IP44, (F_ _ _ 0A)

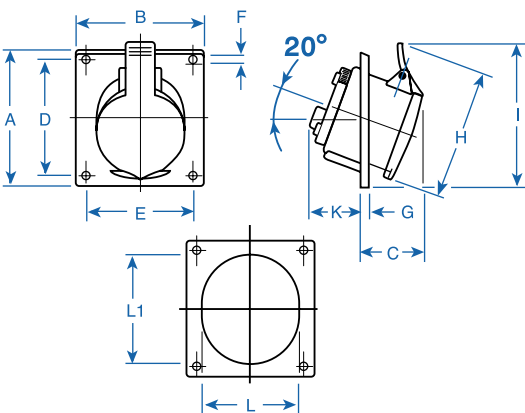


Dimensions

Wires Amp. (A)	A	B	C	D	E	F	G	H	I	K	L	L1	M	
5	20	100	92	32	85	77	5.1	6	89.5	98	47	70	85	5
5	30	102.5	92	44	85	77	5.1	6	100	100	47	80	95	-
4	20	100	92	29	85	77	5.1	6	82.5	97	47	60	75	2.5
4	30	102.5	92	39	85	77	5.1	6	94.5	97	53	65	85	-
3	20	74	64	40	60	52	5.1	5	74	71.5	35	55	65	-
3	30	102.5	92	39	85	77	5.1	6	94.5	97	53	65	85	-

Note: All dimensions are shown in millimeters. To convert to inches, divide by 25.4.

Receptacle, Panel Mount, Angled, IP44, (F_ _ _ 1A)

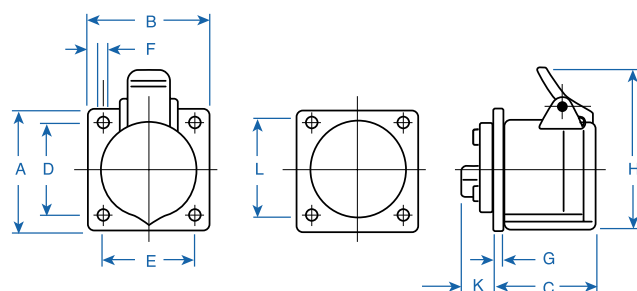


Dimensions

Wires Amp. (A)	A	B	C	D	E	F	G	H	I	K	L	L1	
5	60	100	92	70	85	77	5.5	6	103.5	123	77	80	93
4	60	100	92	70	85	77	5.5	6	103.5	123	77	80	93

Note: All dimensions are shown in millimeters. To convert to inches, divide by 25.4.

Receptacle, Panel Mount, Straight, IP44, (F_ _ _ 3A)

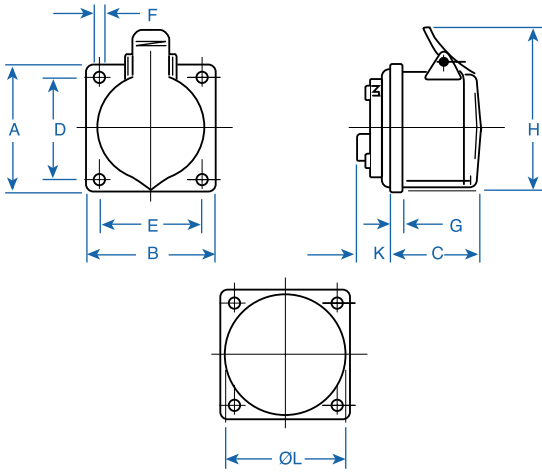


Dimensions

Wires Amp. (A)	A	B	C	D	E	F	G	H	K	L	
5	20	72	65	52	52	52	5.5	6.5	89.5	21	50
5	30	86	76	66.5	60	60	5.5	6.5	100.5	16.5	67
5	60	107	107	93.5	85	77	5.5	13.5	117	38	80
4	20	75	75	56	60	60	5.5	6.5	87.5	16.5	56
4	30	75	75	66.5	60	60	5.5	6.5	92.5	19	65
4	60	107	107	93.5	85	77	5.5	13.5	117	38	80
3	20	62	62	47.5	47	47	5.5	4.5	76.5	22	45
3	30	75	75	66.5	60	60	5.5	6.5	92.5	19	65

Note: All dimensions are shown in millimeters. To convert to inches, divide by 25.4.

Receptacle, Panel Mount, Straight, IP44, (F_ _ _ 4A)

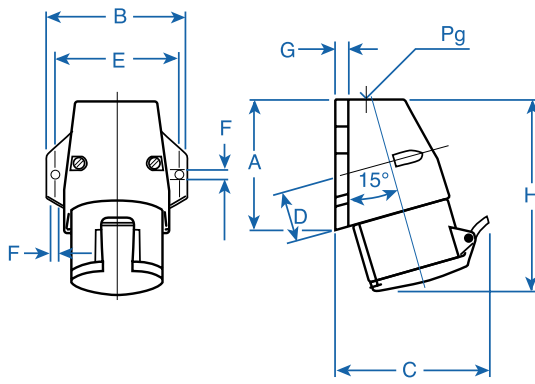


Dimensions

Wires Amp. (A)	A	B	C	D	E	F	G	H	K	ØL	
5	30	75	75	65.5	60	60	5.5	6.5	102	17	58

Note: All dimensions are shown in millimeters. To convert to inches, divide by 25.4.

Receptacle, Wall Mount, Angled/Box, IP44, (D_ _ _ 0)

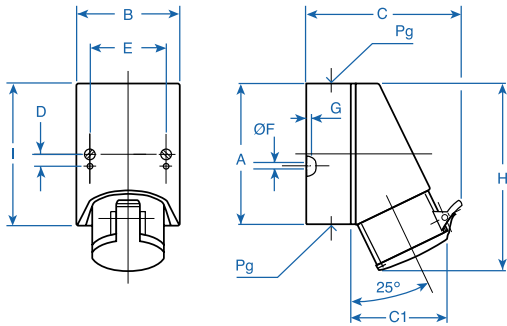


Dimensions

Wires Amp. (A)	A	B	C	D	E	F	G	H	Pg	
5	16	90	96	107	35	85	5	9	133	1xM20
5	32	92.5	106	116.5	35	93	5	9	147	1xM25
4	16	82.5	86	100.5	35	75	5	9	125	1xM20
4	32	92.5	106	115	35	93	5	9	141	1xM25
3	16	82.5	86	97	35	75	5	9	123	1xM20
3	32	92.5	106	105	35	93	5	9	141	1xM25

Note: All dimensions are shown in millimeters. To convert to inches, divide by 25.4.

Receptacle, Wall Mount, Angled/Box, IP44, (D_ _ _ 2)

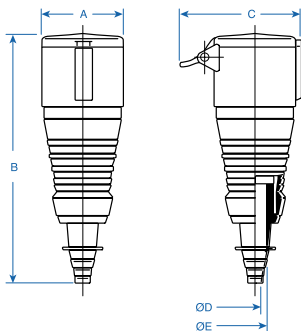


Dimensions

Wires Amp.	A	B	C	C1	D	E	F	G	H	I	Pg
5	63	170	118	170	102	6	6	212	130	3xM32	
4	63	170	118	170	102	6	6	212	130	3xM32	

Note: All dimensions are shown in millimeters. To convert to inches, divide by 25.4.

Connector, Vinyl Sleeve, IP44, (K_ _ _ 0A)

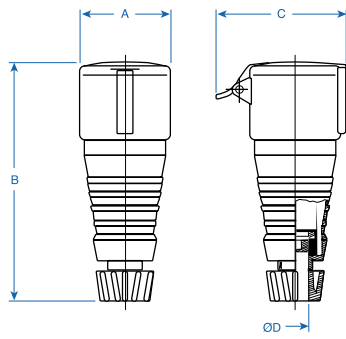


Dimensions

Wires Amp. (A)	A	B	C	ØD	ØE	
5	20	64	193	89.5	7	17
5	30	72	215.5	100	10	24
4	20	56.5	184.5	82.5	7	17
4	30	66	215.5	94.5	10	24
3	20	49.5	170.5	74	6	15
3	30	66	215.5	94.5	10	24

Note: All dimensions are shown in millimeters. To convert to inches, divide by 25.4.

Connector, Cable Gland, IP44, (K_._. 1A)

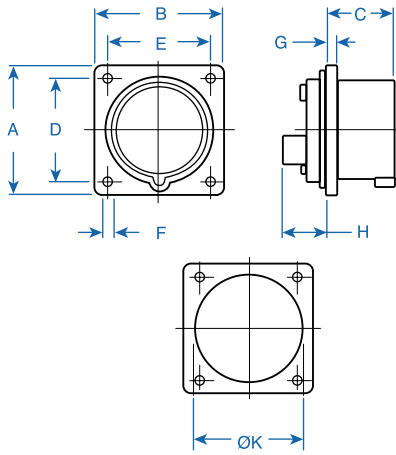


Dimensions

Wires Amp. (A)	A	B	C	ØD
5	20	64	168	89.5
5	30	72	189	100
5	60	80	283.5	103.5
4	20	56.5	159.5	82.5
4	30	66	189	94.5
4	60	80	283.5	103.5
3	20	49.5	144	74
3	30	66	189	94.5

Note: All dimensions are shown in millimeters. To convert to inches, divide by 25.4.

Inlet, Panel Mount, Straight, IP44, (A_._. 4A)

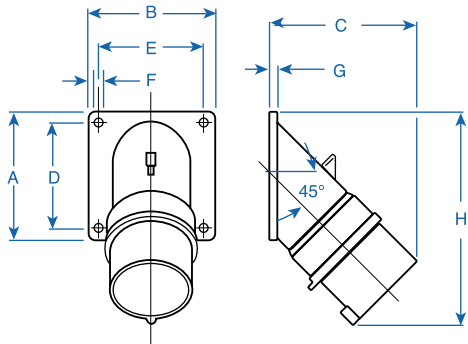


Dimensions

Wires Amp. (A)	A	B	C	D	E	F	G	H	ØK
5	20	75	75	44	60	60	5.5	6.5	21.5
5	30	85	75	53	60	60	5.5	6.5	23.5
5	60	107	107	81.5	85	77	5.5	13.5	38
4	20	75	75	44	60	60	5.5	6.5	24.5
4	30	75	75	53	60	60	5.5	6.5	27.5
4	60	107	107	81.5	85	77	5.5	13.5	38
3	20	62	62	44	47	47	5.5	4.5	21.5
3	30	75	75	53	60	60	5.5	6.5	27.5

Note: All dimensions are shown in millimeters. To convert to inches, divide by 25.4.

Inlet, Panel Mount, Angled, IP44, (A_._. 0A)

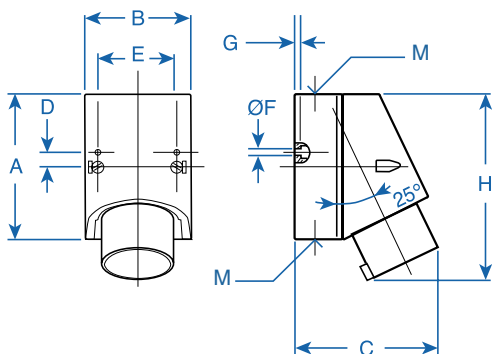


Dimensions

Wires Amp. (A)	A	B	C	D	E	F	G	H
5	20	85	85	100	70	70	6.2	6
5	32	85	85	115	70	70	6	158

Note: All dimensions are shown in millimeters. To convert to inches, divide by 25.4.

Inlet, Wall Mount, 80°/Box, IP44, (G_._. 0A)

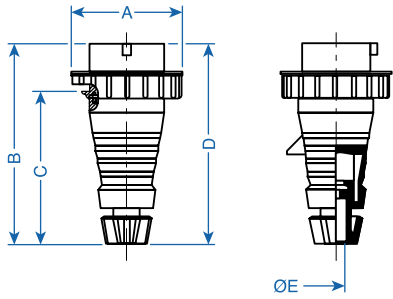


Dimensions

Wires Amp. (A)	A	B	C	D	E	F	G	H	Pg
5	16	112	80	110	10.5	60	5	4	145
5	32	125	90	131	10	68	5.3	4	165
4	16	112	80	104	10.5	60	5	4	143
4	32	125	90	124	10	68	5.3	4	164
3	16	90	68	96	10.5	48	4.5	4	122
3	32	125	90	124	10	68	5.3	4	164

Note: All dimensions are shown in millimeters. To convert to inches, divide by 25.4.

Plug, Cable Gland, IP67 (S_... 5A)

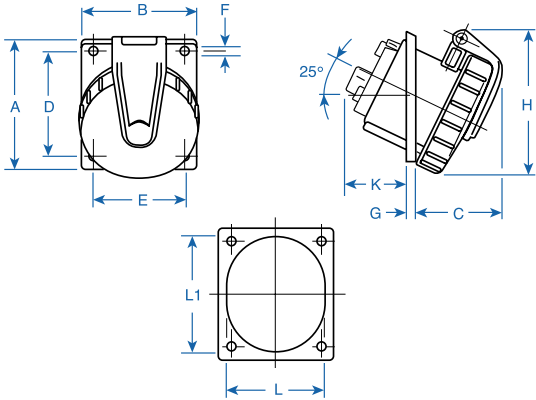


Dimensions

Wires Amp. (A)	A	B	C	D	E	
5	20	85	156	119.5	128	17
5	30	98	175.5	130	143.5	21.5
5	60	113.5	271	204.5	235	38
5	100	131	311	236	268.5	44
4	20	77	147.5	111	119.5	17
4	30	91	175.5	124	143.5	21.5
4	60	113.5	271	204.5	235	38
4	100	131	311	236	268.5	44
3	20	69	135	98.5	112.5	15
3	30	91	175.5	124	143.5	21.5

Note: All dimensions are shown in millimeters. To convert to inches, divide by 25.4.

Receptacle, Panel Mount, Angled, IP67, (F_... 5A)

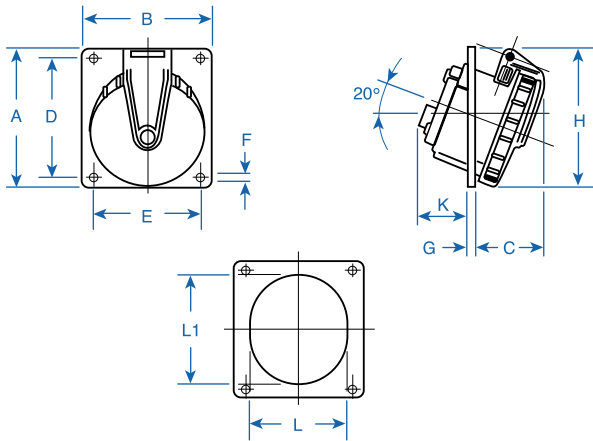


Dimensions

Wires Amp. (A)	A	B	C	D	E	F	G	H	K	L	L1	
3	20	74	64	49	60	52	5.1	5	82	39	55	65
4	20	?	?	?	?	?	?	?	?	?	?	?

Note: All dimensions are shown in millimeters. To convert to inches, divide by 25.4.

Receptacle, Panel Mount, Angled, IP67, (F_... 6A)

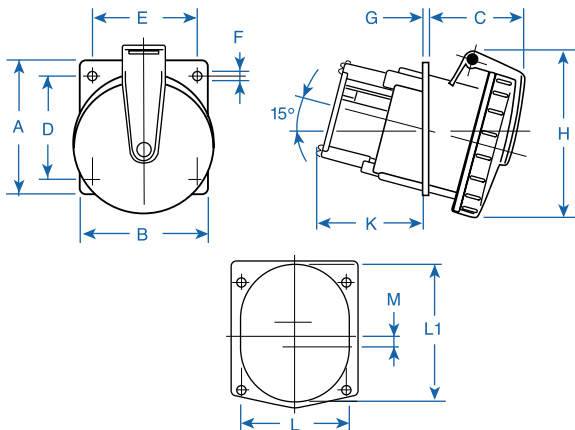


Dimensions

Wires Amp. (A)	A	B	C	D	E	F	G	H	K	L	L1	
5	20	100	92	50	85	77	5.1	6	100	38	70	80
5	30	102.5	92	60	85	77	5.1	6	115	39	80	95
5	60	100	92	70	85	77	5.5	6	123	77	80	93
4	60	100	92	70	85	77	5.5	6	123	77	80	93

Note: All dimensions are shown in millimeters. To convert to inches, divide by 25.4.

Receptacle, Panel Mount, Angled, IP67, (F_... 7A)

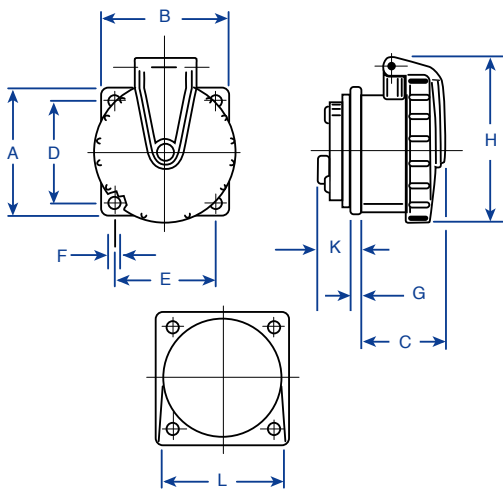


Dimensions

Wires Amp. (A)	A	B	C	D	E	F	G	H	I	K	L	L1	M	
5	100	114	110	82	90	90	6.3	5	141	91	92	92	115	9
4	100	114	110	82	90	90	6.3	5	141	91	92	92	115	9

Note: All dimensions are shown in millimeters. To convert to inches, divide by 25.4.

Receptacle, Panel Mount, Straight, IP67, (D_..._ 8A)

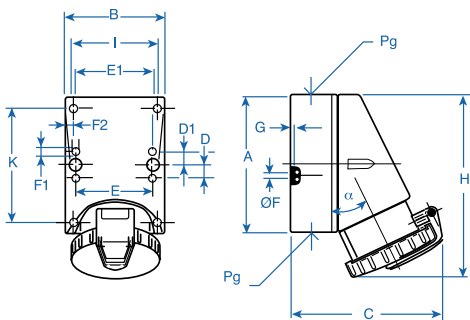


Dimensions

Wires Amp. (A)	A	B	C	D	E	F	G	H	K	L	
5	20	72	65	52	52	5.5	6.5	89.5	21	50	
5	30	86	76	66.5	60	60	5.5	6.5	100.5	16.5	67
5	60	107	107	93.5	85	77	5.5	13.5	117	38	80
4	20	75	75	56	60	60	5.5	6.5	87.5	16.5	56
4	30	75	75	66.5	60	60	5.5	6.5	92.5	19	65
4	60	107	107	93.5	85	77	5.5	13.5	117	38	80
3	20	62	62	47.5	47	47	5.5	4.5	76.5	22	45
3	30	75	75	66.5	60	60	5.5	6.5	92.5	19	65

Note: All dimensions are shown in millimeters. To convert to inches, divide by 25.4.

Receptacle, Wall Mount, 80°/Box, IP67, (D_..._ 7A)

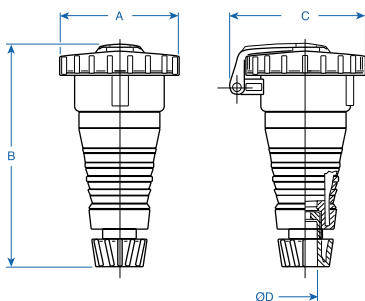


Dimensions

Wires Amp. (A)	A	B	C	D	D1	E	E1	ØF	F1	F2	G	H	I	K	α	Pg	
5	16	125	90	139	10	-	68	-	5.3	-	4	167	-	-	25°	3xM25	
5	32	125	90	156	10	-	68	-	5.3	-	4	178	-	-	25°	3xM25	
5	63	170	118	177	-	-	-	6	-	-	6	213	102	130	25°	3xM32	
5	125	260	165	213	-	-	-	8.1	-	-	9	296	141	210	20°	2xM40	
4	16	125	90	132	10	-	68	-	5.3	-	4	169	-	-	25°	3xM25	
4	32	125	90	150	10	-	68	-	5.3	-	4	176	-	-	25°	3xM25	
4	63	170	118	177	-	-	-	6	-	-	6	213	102	130	25°	3xM25	
4	125	260	165	213	-	-	-	8.1	-	-	9	296	141	210	20°	2xM40	
3	16	90	68	115	-	10.5	-	48	-	6	4.5	4	135	-	-	25°	2xM20
3	32	125	90	150	10	-	68	-	5.3	-	4	176	-	-	25°	3xM25	

Note: All dimensions are shown in millimeters. To convert to inches, divide by 25.4.

Connector, Cable Gland, IP67, (K_..._ 5A)

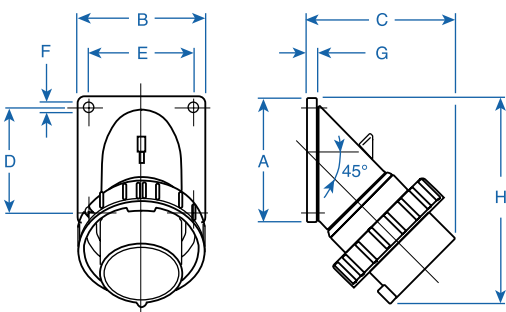


Dimensions

Wires Amp. (A)	A	B	C	ØD	
5	20	85	172	97	17
5	30	98	193.5	112	21.5
5	60	103	289	115	38
5	100	121	333.5	136	44
4	20	77	163	89	17
4	30	91	192.5	105	21.5
4	60	103	289	115	38
4	100	121	333.5	136	44
3	20	69	151.5	81	15
3	30	91	192.5	105	21.5

Note: All dimensions are shown in millimeters. To convert to inches, divide by 25.4.

Inlet, Panel Mount, Angled, IP67, (A_..._ 5A)

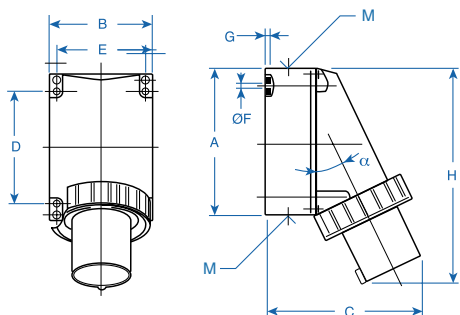


Dimensions

Wires Amp. (A)	A	B	C	D	E	F	G	H	
5	20	85	85	100	70	70	6.2	6	141
5	30	85	85	115	70	70	6	6	158
5	60	114	114	158	90	90	6.5	6	213

Note: All dimensions are shown in millimeters. To convert to inches, divide by 25.4.

Inlet, Wall Mount, 80°/Box, IP67, (G_..._ 5)



Dimensions

Wires Amp. (A)	A	B	C	D	E	F	G	H	α	Pg	
5	63	170	118	177	130	102	6	6	251	25°	3xM32
5	125	260	165	207	210	141	8.1	9	350	20°	2xM40
4	63	170	118	177	130	102	6	6	251	25°	3xM32

Note: All dimensions are shown in millimeters. To convert to inches, divide by 25.4.

TECHNICAL DATA & ACCESSORIES

Electrical

Insulation Voltage, Max. (Volts)	16/20 Amp. (A) = 750V 32/30 Amp. (A) = 750V All 2P/3W devices: 16/20Amp(A) and 32/30Amp(A) = 500V	63/60 Amp. (A) = 750V 125/100 Amp. (A) = 750V
Dielectric Withstanding Voltage	16/20 Amp. (A) = 2,500V 32/30 Amp. (A) = 2,500V Per IEC 60309-1	63/60 Amp. (A) = 2,500 V 125/100 Amp. (A) = 2,500V
Current Interrupting	Certified for current interrupting at 100% (UL)/110% (IEC) of the rated operating voltage and 125% (IEC)/150% (UL) of the rated current at a power factor of 0.6 (16/20 Amp. (A), 32/30 Amp. (A), 63/60 Amp. (A)) and 0.7 (125/100 Amp. (A))	
Temperature Rise	Maximum 30°C temperature rise at full rated current	
Endurance, Connect and disconnect cycles at full rated current and voltage	16/20 Amp. (A) = 5,000 @ a p.f. of 0.6 32/30 Amp. (A) = 5,000 @ a p.f. of 0.6	63/60 Amp. (A) = 1,000 @ a p.f. of 0.6 125/100 Amp. (A) = 1,000 @ a p.f. of 0.7

Mechanical

Cord Accommodation, Min.	Round portable service cords of diameters commensurate with the device as defined in UL Standard 62, CSA C22.2 No. 49 and the harmonized <HAR> European Standards. Per IEC 60309-1, Table X
Impact Resistance	Per IEC 60309-1, Clause 24; CSA C22.2
Cord Grip Cable Retention, Min.	Per IEC 60309-1 Table XI
Terminal Identification	Per IEC 60309-1, Sub-clause 7.5 and UL 1682, 1686

Environmental

Temperature Range, Operating	-25°C to + 80°C (-13°F to + 176°F)
Moisture Resistance	Splashproof IP 44; Watertight IP 67; Per IEC 60309-1, Clause 18 and IEC 60529
Flammability	Self-extinguishing Per IEC 60309-1, Clause 27 Flame Class Rating UL 94V-2

Material

Housing (Front and Back)	Type 6 Nylon (UL 94V-2)
Cover	Type 6 Nylon (UL 94V-2)
Cover Rivet	Brass
Cover Spring	Stainless Steel (A2)
Contact Carrier	Type 6 Nylon (UL 94V-2)
Contacts	Brass
Terminal Screws	Steel, Nickel Plated, bichromated
Internal Strain Relief	Type 6 Nylon (UL 94V-2)
External Strain Relief	Type 6 Nylon (UL 94V-2)
Grommet	Concentric Laminated Rubber
Retaining Ring	Steel, Electro Zinc Plated
Assembly Screws	Steel, Nickel Plated, chromated

Recommended wire size

IEC	
Amp Rating	Minimum Wire Size per IEC
16	1.5mm ²
32	4mm ²
63	10mm ²
125	35mm ²

Recommended wire size

UL/CSA	
Amp Rating	AWG for 100% of Rating*
20	14 AWG
30	8 AWG
60	4 AWG
100	2 AWG



Twist Nipple IP 54

Material	Type	cable diameter
High pressure polyethylene	M20	6 - 14mm
	M25	7 - 17mm
	M32	9 - 24mm

Recommended screw torque for terminal set screws

Wire Size	Nm.	ft. / lb	in. / lb
1.5mm ² / 14 AWG	0.8	0.6	7.1
4mm ² / 8 AWG	1.2	0.9	10.6
10mm ² / 4 AWG	2.0	1.5	17.7
35mm ² / 2 AWG	10.0	7.4	88.5



PA - Cable Gland IP 67

Material	Type	cable diameter
glass fibre reinforced	M20	7 - 14mm
	M25	9 - 18mm
polyamide	M32	14 - 25mm
grey RAL 7035	M40	18 - 32mm

* Please refer to National Electric Code, to determine wire size for different Amp Ratings.

Altech Corp.[®]

Serving the Automation & Control Industry Since 1984

ISO9001 Certified



Circuit Breakers



Disconnect Switches



Enclosures



Foot Switches



European Fuses



Interface Modules



Liquid Tight Strain Reliefs



Pin & Sleeve Devices



PCB Terminal Blocks



Push Buttons



Safety Relays



Sensors



Terminal Blocks



Wire Ducts



Eurostrips



Ferrules & Tools

News

Online Catalogs

Part No. Search

Dealer Locator

Contact

Private

SPECIALS

ORDER ONLINE

35 Royal Road • Flemington • NJ • 908.806.9400 (t) • 908.806.9490 (f) • info@altechcorp.com

Click here for inquiries outside North America.

PRODUCT LINES

- Miniature Circuit Breakers
- DIN Enclosures
- Electronic Enclosures
- European Fuses
- Foot Switches
- Inductive Proximity Sensors
- Industrial Enclosures
- Interface Modules
- Liquid Tight Strain Reliefs
- Metal Detection Systems
- Motor Disconnect Switches
- Pin and Sleeve Devices
- Push Buttons
- Safety Relays
- Terminal Blocks

Altech Corporation
35 Royal Road
Flemington, NJ 08822-6000
Phone (908) 806-9400
Fax (908) 806-9490
www.altechcorp.com

Altech Corp.® 252-092003-5M