

BD SERIES TUNNEL SENSORS

Altech BD Series Tunnel Sensors are used where highest detection capacities, sensitivity and reliability are needed. The user can choose between different control units depending on the complexity of his application. Applications include conveyors in the Plastic and Recycling Industry. The stainless steel housing also allows installation in the food industry. The unit is maintenance and calibration free.

Features

- Highest Sensitivity
- Custom Size (Height and Width)
- Stainless Steel Housing
- Different Control Units
- IP65

TECHNICAL SPECIFICATIONS

Sensor Opening - Height	50mm..750mm (25mm steps)
Sensor Opening - Width	100mm..1400mm (50mm steps)
Housing Material	Stainless Steel
Sensor Material Inside	Epoxy
Mounting	4 x threaded pin M12 x 45
Control Unit	Digital Plus or M-Pulse (Mounted directly to the Tunnel or up to 3m away)
Electrical Connection	Supply via Control Unit



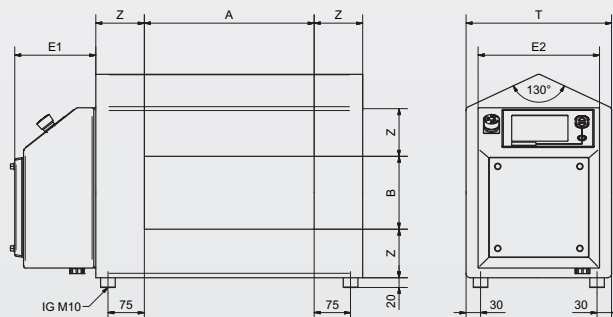
Environmental Data

Operating Temperature	0°C..+50°C
Storage Temperature	-10°C..+50°C
Protection Class	IP65

POSSIBLE CONFIGURATIONS (EXAMPLES)

Part No.	Detection Height	Detection Width	Sensitivity		Dimension T	Dimension Z	Control Unit
			FE-Ball	Stainless Steel-Ball			
AMD-BD20075-DPLUS	75mm	200mm	0.7mm	1.4mm	280mm	100mm	Digital Plus
AMD-BD350100-DPLUS	100mm	350mm	0.8mm	1.8mm	280mm	100mm	Digital Plus
AMD-BD350100-MPULSE	100mm	350mm	0.8mm	1.8mm	280mm	100mm	M-Pulse
AMD-BD350150-DPLUS	150mm	350mm	1.0mm	2.0mm	280mm	100mm	Digital Plus
AMD-BD400200-DPLUS	200mm	400mm	1.2mm	2.2mm	330mm	120mm	Digital Plus
AMD-BD400200-MPULSE	200mm	400mm	1.2mm	2.2mm	330mm	120mm	M-Pulse
AMD-BD450250-DPLUS	250mm	450mm	1.5mm	2.5mm	330mm	120mm	Digital Plus
AMD-BD450250-MPULSE	250mm	450mm	1.5mm	2.5mm	330mm	120mm	M-Pulse
AMD-BD450300-DPLUS	300mm	450mm	1.6mm	2.8mm	380mm	140mm	Digital Plus
AMD-BD600350-DPLUS	350mm	600mm	2.0mm	2.8mm	380mm	160mm	Digital Plus
AMD-BD600350-MPULSE	350mm	600mm	2.0mm	2.8mm	380mm	160mm	M-Pulse
AMD-BD750400-DPLUS	400mm	750mm	3.0mm	4.0mm	430mm	180mm	Digital Plus

Dimensions



TU SERIES TUNNEL SENSORS

Altech TU Series Tunnel Sensors are used where highest detection capacities, sensitivity and reliability are needed. The user can choose between different control units depending on the complexity of his application. Applications include conveyors in the Plastic and Recycling Industry. The stainless steel housing also allows installation in the food industry. The unit is maintenance and calibration free.

The difference to the BD series is it is possible to be disassembled. It can be used on existing conveyors and machines which can't be disassembled. The Tunnel sensor can be divided into several modules and reassembled around existing machinery.

Features

- Possible to Disassemble
- Highest Sensitivity
- Custom Size (Height and Width)
- Stainless Steel Housing
- Different Control Units
- IP65



TECHNICAL SPECIFICATIONS

Active Sensor Opening - Height	100mm..800.. (50mm steps)
Active Sensor Opening - Width	300mm..2500mm (100mm steps)
Housing Material	Stainless Steel
Sensor Material Inside	Epoxy
Mounting	4 x Drill holes
Control Unit	Digital Plus or M-Pulse (Mounted directly to the Tunnel or up to 3m away)
Electrical Connection	Supply via Control Unit

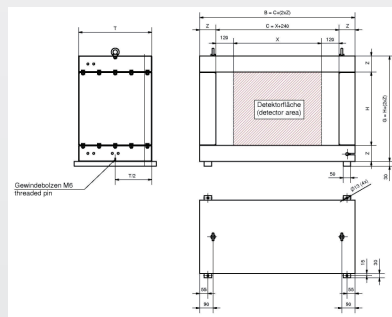
Environmental Data

Operating Temperature	0°C..+50°C
Storage Temperature	-10°C..+50°C
Protection Class	IP54

POSSIBLE CONFIGURATIONS (EXAMPLES)

Part No.	Detection Height	Detection Width	Sensitivity		Dimension T	Dimension Z	Control Unit
			FE-Ball	Stainless Steel-Ball			
AMD-TU200200-DPLUS	200mm	200mm	2.5mm	4.0mm	500mm	110mm	Digital Plus
AMD-TU200200-MPULSE	200mm	200mm	2.5mm	4.0mm	500mm	110mm	M-Pulse
AMD-TU300300-DPLUS	300mm	300mm	3.0mm	5.0mm	500mm	110mm	Digital Plus
AMD-TU300300-MPULSE	300mm	300mm	3.0mm	5.0mm	500mm	110mm	M-Pulse
AMD-TU600400-DPLUS	400mm	600mm	3.5mm	6.0mm	500mm	110mm	Digital Plus
AMD-TU600400-MPULSE	400mm	600mm	3.5mm	6.0mm	500mm	110mm	M-Pulse
AMD-TU1000500-DPLUS	500mm	1000mm	7.0mm	9.0mm	500mm	110mm	Digital Plus
AMD-TU1000500-MPULSE	500mm	1000mm	7.0mm	9.0mm	500mm	110mm	M-Pulse
AMD-TU10001000-DPLUS	1000mm	1000mm	M16 Nut	M16 Nut	500mm	110mm	Digital Plus
AMD-TU10001000-	1000mm	1000mm	M16 Nut	M16 Nut	500mm	110mm	M-Pulse

Dimensions



CONTROL UNIT ULTRA HIGH SENSITIVITY RING SENSORS

The Control Unit automatically controls and adjusts the connected sensor. This allows a maintenance-free operation. A32-Bit Processor System analyses the sensor data in realtime and filters out product effects and interferences. The device can be monitored via several In- and Outputs.

Features

- Stainless Steel Housing (IP65)
- Easy Handling and Operation
- High Sensitivity Application
- Fade-Out product Effect
- Maintenance Free operation

Technical Specifications

Part No.	included with AMD-RG Series
Supply Voltage	85-265 VAC, 50/60Hz
Power Consumption	max. 40W
Switching State	LED
Electrical Connection	3m connection cable (L1, N, Ground)
Digital I/O	
Digital Inputs	4
Digital Input Types	Optical isolated; VL= -5..1.5V, VH= 6..50V; (Multifunction-Key, Ejector Guard)
Digital Outputs	6
Digital Output Types	PNP; max. 200mA (Transducer, Ejector, Device State)
Sensor - Transmitter	50 Ohm; Overload/ Short Circuit Proof (50..650kHz)
Sensor - Receiver	HDC-IQ - Receiver with Sensor-Readjustment
Serial Interfaces	2
Relay Output	2 SPDT; 250V, 1A
Voltage Output	24 VDC, Overload/ Short Circuit Proof; max. 2.5W for internal Components

Environmental Data

Operating Temperature	-10°C..+60°C
Storage Temperature	0°C..+50°C
Protection Class	IP65
Housing Material	Stainless Steel
Dimensions	200x300x80mm (7.9"x11.8"x3.2")
Weight	3000g (6.6lb)



Operation and Handling

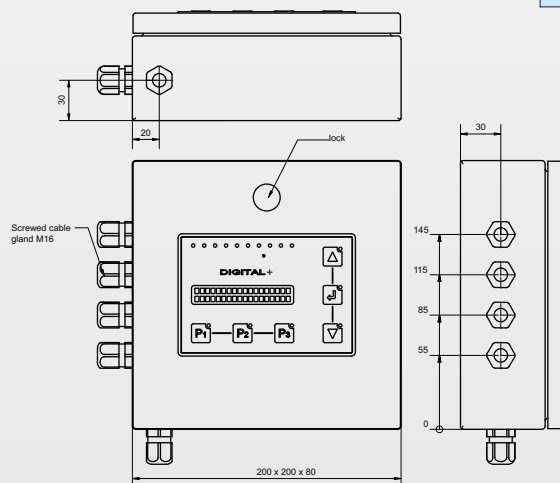
Operation of the Control Unit is easy. The user can adjust the sensitivity and sets the parameters for various targets and their product effect. The parameters are set via the display and saved by pressing a button. Each saved product can be recalled by a single button. 3 LEDs signalize if there is a product loaded and which product it is.

The device is entirely maintenance-free. An integrated self-diagnosis tool immediately signalizes errors. All connections are pluggable.

Display

Keyboard	6 Keys (2 Selection Arrows, Enter, 3 x Keys for product)
Display	2 x 20 Characters, Backlit

Dimensions



M-PULSE CONTROL UNIT

The Control Unit automatically controls and adjusts the connected sensor. This allows a maintenance-free operation. A32-Bit Processor System analyses the sensor data in realtime and filters out product effects and interferences. The device can be monitored via several In- and Outputs. Many additional Interfaces allow integration into other systems and machines.

Features

- Stainless Steel Housing (IP65)
- Easy Handling and Operation
- High Sensitivity Application
- Fade-Out product Effect
- Touchscreen Display
- HTTP Server for Remote Control and Updates
- Maintenance Free operation



Technical Specifications

Part No.	included with TU or BD Series Tunnel Sensors
Supply Voltage	85-265 VAC, 50/60Hz
Power Consumption	max. 40W
Switching State	LED
Electrical Connection	3m connection cable (L1, N, Ground)
Digital I/O	
Digital Inputs	4
Digital Input Types	Optical isolated; VL= -5..1.5V, VH= 6..50V; (Multifunction-Key, Ejector Guard)
Digital Outputs	6
Digital Output Types	PNP; max. 200mA (Transducer, Ejector, Device State)
Sensor - Transmitter	50 Ohm; Overload/ Short Circuit Proof (50..650kHz)
Sensor - Receiver	HDC-IQ - Receiver with Sensor-Readjustment
Serial Interfaces	2 x RS232
LAN	RJ45, Ethernet, 10/100 Mbit
Relay Output	2 SPDT; 250V, 1A
Voltage Output	24 VDC, Overload/ Short Circuit Proof; max. 2.5W for internal Components

Environmental Data

Operating Temperature	-10°C..+60°C
Storage Temperature	0°C..+50°C
Protection Class	IP65
Housing Material	Stainless Steel
Dimensions	250x330x160mm (9.8"x13.0"x6.3")
Weight	4600g (10.1lb)

Operation and Handling

The Touchscreen makes operation of the Control Unit very easy. The user can adjust the sensitivity and teaches in parameters for various targets and their product effect. The Effect can be taught in via the display and saved by pressing a button. The QuickLearn function allows also to save a product effect in one step. Each saved product can be recalled by a single button.

The device is entirely maintenance-free. An integrated self-diagnosis tool immediately signalizes errors. All connections are plug-gable.

Display

Display	320x240 TFT (65536 colors) Touchscreen
---------	--