

Cable Gland / ATEX - Polyamide

Material:

- Body: Polyamide 6
- Seal: Neoprene
- Color: Blue

Technical Properties:

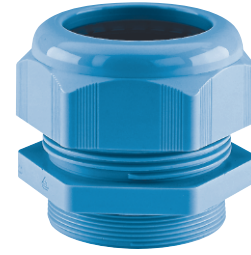
- Maximum strain relief through clamping range
- Gland must be mounted with flat seal and metal locknut
- Trapezoidal thread with high torque guarantees tight and permanent fit of the dome nut
- Gas- and watertight

Applications:

- Explosion endangered areas
- Machines and devices
- Measuring and control engineering
- Plant installations

Temperature Range

-20 to 60°C
(-4 to 140°F)



L.C.I.E. ATEX

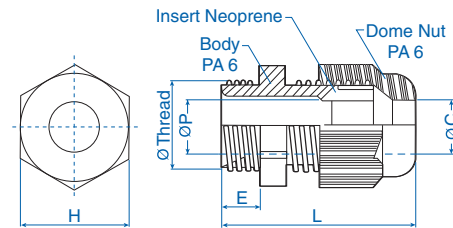
NPT Thread

Outer thread	Clamping range mm	Cat. No. Blue	Std. Pk.
NPT 3/8"	2.5-8	5507760	50
NPT 1/2"	5-12	5507761	50
NPT 3/4"	9-18	5507762	20
NPT 1"	14-25	5507763	20

Metric Thread*

Outer thread	Clamping range mm	Cat. No. Blue	Std. Pk.
M 12 x 1.5	2.5-6.5	5507560	50
M 16 x 1.5/9	2.5-8	5507561	50
M 16 x 1.5/11	3.5-10	5507562	50
M 20 x 1.5/13	5-12	5507563	50
M 20 x 1.5/16	7-14	5507564	50
M 25 x 1.5/16	7-14	5507565	20
M 25 x 1.5/21	9-18	5507566	20
M 32 x 1.5	14-25	5507567	20
M 40 x 1.5	18-32	5507568	20
M 50 x 1.5	24-38.5	5507569	10
M 63 x 1.5	35-48	5507570	5

Thread Size	Dimensions					
	H mm	E mm	L mm	ØC mm	ØP mm	ØThread mm
NPT 3/8	19	11	38	8.5	8.7	17.1
NPT 1/2	24	14	44	12.5	12.5	21.2
NPT 3/4	33	15	54	18.5	18.5	26.7
NPT 1	42	18	60	25.5	25.5	33.3
M12x1.5	15	8	32	6.7	6.8	12.0
M16x1.5/9	19	10	37	8.5	8.5	16.0
M16x1.5/11	22	10	39	10.5	10.5	16.0
M20x1.5/13	24	10	40	12.5	12.5	20.0
M20x1.5/16	27	10	43	14.5	14.5	20.0
M25x1.5/16	27	10	45	14.5	14.5	25.0
M25x1.5/21	33	10	49	18.5	18.5	25.0
M32x1.5	42	10	52	25.5	25.5	32.0
M40x1.5	53	10	62	32.5	32.5	40.0
M50x1.5	60	12	67	39.0	39.0	50.0
M63x1.5	70	12	68	48.5	48.5	63.0



* Extended thread available consult Altech

Material:

- Body: Polyamide PA 6
25 % Glass fiber Reinforced
- Seal: Neoprene
- ECA clamping ring: Polycarbonate

Characteristics:

- PG/Metric thread
- Extended thread available
- Strain relief through clamping ring

Applications:

- For explosion endangered areas according to EN 50014 and EN 50019
- Machines and devices
- Measuring and control engineering
- Plant installations



Temperature Range PA 6 -20 to 55°C (-4 to 131 °F)

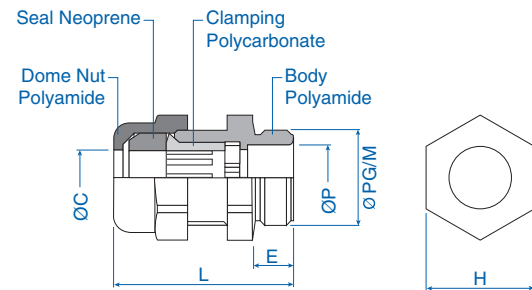
Gland must be mounted with flat seal and lockout.



ECA Clamping Ring
(Punchout Seal)

Outer thread	Clamping range mm	Cat. No. Dark Grey	Cat. No. Black	Std. Pk.
PG				
PG 9	3.5 - 8.5	5507009	5507050	50
PG 11	4.0 - 10.5	5507011	5507051	50
PG 13.5	5.0 - 12.5	5507013	5507052	50
PG 16	6.5 - 14.0	5507016	5507053	50
PG 21	8.0 - 18.5	5507021	5507054	20
PG 29	10.0 - 25.0	5507029	5507055	20
Metric				
M 16 x 1.5	3.5 - 8.5	5507216	5507250	50
M 20 x 1.5/13	5.0 - 12.5	5507220	5507251	50
M 20 x 1.5/16	6.5 - 14.0	5507221	5507252	50
M 25 x 1.5	8.0 - 18.5	5507225	5507253	20
M 32 x 1.5	10.0 - 25.0	5507232	5507254	20

Thread Size	Dimensions					
	H mm	E mm	L mm	ØC mm	ØP mm	ØPG/M mm
PG9	19	8	32	8.5	9.0	15.2
PG11	22	8	35	11.5	11.0	18.6
PG13.5	24	9	36	12.5	13.5	20.4
PG16	27	10	40	14.5	15.0	22.5
PG21	33	11	44	18.5	19.0	28.3
PG29	42	12	55	25.0	25.0	37.0
M 16x1.5	19	8	32	8.5	9.0	16.0
M 20x1.5/13	24	9	36	12.5	13.5	20.0
M 20x1.5/16	27	9	39	14.5	15.0	20.0
M 25x1.5	33	11	44	18.5	19.0	25.0
M 32x1.5	42	12	55	25.0	25.0	32.0



Short Seal

Outer thread	Clamping range mm	Cat. No. Dark Grey	Cat. No. Black	Std. Pk.
PG				
PG 9	4.5 - 8.0	5508009	5508050	50
PG 11	5.5 - 10.5	5508011	5508051	50
PG 13.5	7.0 - 12.0	5508013	5508052	50
PG 16	9.0 - 14.0	5508016	5508053	50
PG 21	11.5 - 18.0	5508021	5508054	20
PG 29	16.0 - 24.5	5508029	5508055	20
Metric				
M 16 x 1.5	4.5 - 8.0	5808216	5808250	50
M 20 x 1.5/13	7.0 - 12.0	5808220	5808251	50
M 20 x 1.5/16	9.0 - 14.0	5808221	5808252	50
M 25 x 1.5	11.5 - 18.0	5808225	5808253	20
M 32 x 1.5	16.0 - 24.5	5808232	5808254	20

