

## TABLE OF CONTENTS



### MINIATURE

Mini fuses in five sizes to 20 Amps.

- Slow Blow
- Medium Blow
- Fast Blow
- Super Fast Blow

Fuses **4-5**



### DIAZED

"Bottle" fuses in five sizes to 200 Amps.

- gL/gG - Slow Blow
- - Fast Blow
- gR - Semiconductor Protection

Fuses **6-7**  
Accessories **10-11**



### NEOZED

Compact fuses in three sizes to 100 Amps.

- gL/gG - Slow Blow
- gR - Semiconductor Protection

Fuses **8-9**  
Accessories **10-11**



### CYLINDER

Standard cylinder fuses are available in four sizes to 125 Amps, with or without blown fuse Indicator Pins.

- gL/gF - Line Protection
- aM - Motor Protection
- gR - Semiconductor Protection

Cylinder Bolt fuses are available in two diameters with multiple fixing centers.

- gR - Semiconductor Protection

Fuses - Standard **12-13**  
Fuses - Bolt **14**  
Accessories **15**



### NH

Knife Blade or Stud Mount designs in six sizes with current ratings of 2 to 1600 Amps.

- gL/gG - Line Protection
- aM - Motor Protection
- gR/aR - Semiconductor Protection

Fuses **16-21**  
Accessories **19**



### ITALIAN

Cylinder style fuses available in four sizes with current ratings from 2 to 100 Amps.

- gL - Line Protection

Fuses **22**



### BRITISH

British Line Protection fuses are available with four mounting plate designs with current ratings from 2 to 63 Amps.

• gG - Line Protection  
British Semiconductor fuses are available in single and double body units with multiple diameters and fixing centers.

- aR - Semiconductor Protection

Fuses - Line **23**  
Fuses - Semi. **24-25**



### SQUARE BODY

Square body fuses for semiconductor devices to 1000 Amps.

- aR - Semiconductor Protection

Fuses **26-31**  
Accessories **19**



### HIGH VOLTAGE

Fuses for distribution circuits in four sizes to 36KV.

Fuses **32-33**



### ACCESSORIES

- Screw Caps
- Adapter Screws and Rings
- Fuse Base Covers
- Fuse Bases
- Tools
- End Plates
- Microswitches
- Terminal Covers
- Fuse Handles

**10-11, 15, 19**

Siemens Cross Reference **34-35**

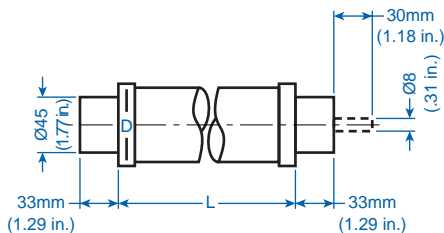
## HIGH VOLTAGE

High Voltage Fuses are typically used in distribution circuits and can be used for indoor or outdoor applications. They are available in four lengths and four different voltage ranges. Fuses supplied standardly with Striker Pins.

*Example:* 3 / 7.2KV High Voltage Fuses can be used on systems that operate on 3KV Voltage to 7.2KV Voltage. (3KV is the lower rated voltage and 7.2KV is the higher rated voltage.)

The High Voltage Fuses offered comply with IEC, DIN and VDE. Please consult Altech for 3 / 3.6KV, 17.5KV Fuses and also for High Voltage fuses which comply with BS 2692 and FSI 12-8 standards.

(IEC 282-1 / VDE 0670)



Approximate Dimensions for High Voltage Fuses mm (in.)\*

Fuse Dim.	Diameter (D)	Fuse Dim.	Diameter (D)
A	53 (2.09)	F	85 (3.35)
B	67 (2.64)	G	85 (3.35)
C	85 (3.35)	H	53 (2.09)
D	53 (2.09)	I	67 (2.64)
E	67 (2.64)	J	85 (3.35)
		K	53 (2.09)

<sup>1</sup> Also available with a 85mm (3.35 in.) diameter.  
\* Dimension to DIN 43625



3 / 7.2KV

### Ordering Information

#### 192mm (7.56 in.) Length (L) Fuse

Rated Current	Cat No.	Dim.	Std. Pk.
6A	6HH7.2-192	D	1
10A	10HH7.2-192	D	1
16A	16HH7.2-192	D	1
20A	20HH7.2-192	D	1
25A	25HH7.2-192	D	1
30A	30HH7.2-192	D	1
40A	40HH7.2-192	D	1
50A	50HH7.2-192	D	1
63A	63HH7.2-192	E	1
80A	80HH7.2-192	E	1
100A	100HH7.2-192	E <sup>1</sup>	1
125A	125HH7.2-192	F	1
160A	160HH7.2-192	F	1
200A	200HH7.2-192	F	1
250A	250HH7.2-192	F	1

#### 292mm (11.50 in.) Length (L) Fuse

6A	6HH7.2-292	A	1
10A	10HH7.2-292	A	1
16A	16HH7.2-292	A	1
20A	20HH7.2-292	A	1
25A	25HH7.2-292	A	1
30A	30HH7.2-292	A	1
40A	40HH7.2-292	A	1
50A	50HH7.2-292	A	1
63A	63HH7.2-292	B	1
80A	80HH7.2-292	B	1
100A	100HH7.2-292	B	1
125A	125HH7.2-292	C	1
160A	160HH7.2-292	C	1
200A	200HH7.2-292	C	1
250A	250HH7.2-292	C	1
315A	315HH7.2-292	C	1
355A	355HH7.2-292	C	1

#### 442mm (17.40 in.) Length (L) Fuse

100A	100HH7.2-442	G	1
125A	125HH7.2-442	G	1
160A	160HH7.2-442	G	1
200A	200HH7.2-442	G	1
250A	250HH7.2-442	G	1
315A	315HH7.2-442	G	1
355A	355HH7.2-442	G	1
400A	400HH7.2-442	G	1
500A	500HH7.2-442	G	1

#### 537mm (21.14 in.) Length (L) Fuse



**6 / 12KV**

Rated Current	Cat No.	Dim.	Std. Pk.
---------------	---------	------	----------

6A	<b>6HH12-292</b>	A	1
10A	<b>10HH12-292</b>	A	1
16A	<b>16HH12-292</b>	A	1
20A	<b>20HH12-292</b>	A	1
25A	<b>25HH12-292</b>	A	1
30A	<b>30HH12-292</b>	A	1
40A	<b>40HH12-292</b>	A	1
50A	<b>50HH12-292</b>	A	1
63A	<b>63HH12-292</b>	B	1
80A	<b>80HH12-292</b>	B	1
100A	<b>100HH12-292</b>	B	1
125A	<b>125HH12-292</b>	C	1
160A	<b>160HH12-292</b>	C	1
200A	<b>200HH12-292</b>	C	1

6A	<b>6HH12-442</b>	H	1
10A	<b>10HH12-442</b>	H	1
16A	<b>16HH12-442</b>	H	1
20A	<b>20HH12-442</b>	H	1
25A	<b>25HH12-442</b>	H	1
30A	<b>30HH12-442</b>	H	1
40A	<b>40HH12-442</b>	H	1
50A	<b>50HH12-442</b>	H	1
63A	<b>63HH12-442</b>	I	1
80A	<b>80HH12-442</b>	I	1
100A	<b>100HH12-442</b>	I	1
125A	<b>125HH12-442</b>	G	1
160A	<b>160HH12-442</b>	G	1
200A	<b>200HH12-442</b>	G	1
250A	<b>250HH12-442</b>	G	1

100A	<b>100HH12-537</b>	J	1
125A	<b>125HH12-537</b>	J	1
160A	<b>160HH12-537</b>	J	1
200A	<b>200HH12-537</b>	J	1
250A	<b>250HH12-537</b>	J	1
315A	<b>315HH12-537</b>	J	1



**10 / 24KV**

Rated Current	Cat No.	Dim.	Std. Pk.
---------------	---------	------	----------

6A	<b>6HH24-442</b>	H	1
10A	<b>10HH24-442</b>	H	1
16A	<b>16HH24-442</b>	H	1
20A	<b>20HH24-442</b>	H	1
25A	<b>25HH24-442</b>	H	1
30A	<b>30HH24-442</b>	H	1
40A	<b>40HH24-442</b>	H	1
50A	<b>50HH24-442</b>	I	1
63A	<b>63HH24-442</b>	I	1
80A	<b>80HH24-442</b>	I	1
100A	<b>100HH24-442</b>	G	1
125A	<b>125HH24-442</b>	G	1

6A	<b>6HH24-537</b>	K	1
10A	<b>10HH24-537</b>	K	1
16A	<b>16HH24-537</b>	K	1
20A	<b>20HH24-537</b>	K	1
25A	<b>25HH24-537</b>	K	1
30A	<b>30HH24-537</b>	K	1
40A	<b>40HH24-537</b>	K	1
50A	<b>50HH24-537</b>	L	1
63A	<b>63HH24-537</b>	L	1
80A	<b>80HH24-537</b>	L	1
100A	<b>100HH24-537</b>	J	1
125A	<b>125HH24-537</b>	J	1
160A	<b>160HH24-537</b>	J	1
200A	<b>200HH24-537</b>	J	1



**20 / 36KV**

Rated Current	Cat No.	Dim.	Std. Pk.
---------------	---------	------	----------

6A	<b>6HH36-537</b>	K	1
10A	<b>10HH36-537</b>	K	1
16A	<b>16HH36-537</b>	K	1
20A	<b>20HH36-537</b>	K	1
25A	<b>25HH36-537</b>	K	1
30A	<b>30HH36-537</b>	L	1
40A	<b>40HH36-537</b>	L	1
50A	<b>50HH36-537</b>	J	1
63A	<b>63HH36-537</b>	J	1