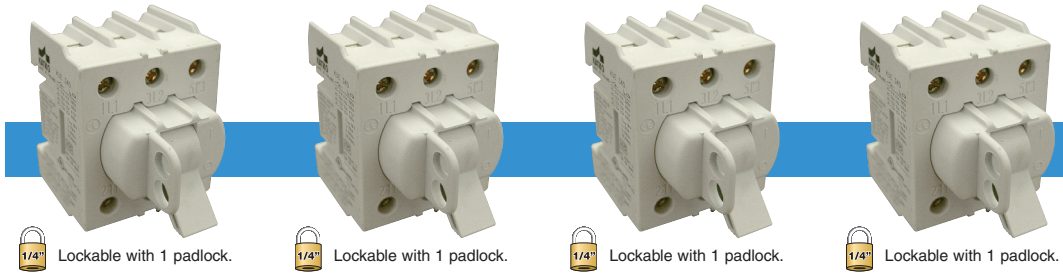


Toggle Handle Motor Disconnect Switch

The KUE series only requires an additional cover plate (see below) which makes the switch IP20 touch proof.



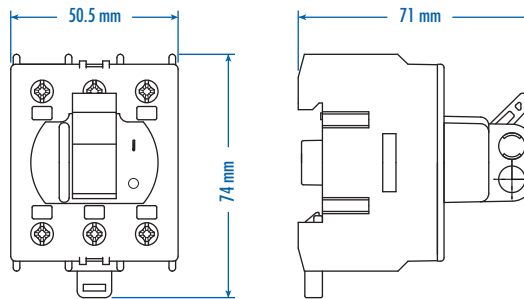
Catalog Number	KUE316	KUE325	KUE340	KUE363
No. of Poles	3	3	3	3
General Purpose Current	16A	25A	40A	60A
Maximum Voltage	600V AC	600V AC	600V AC	600V AC
Motor FLA @ 480V AC	14A	17.5A	28A	34A
Motor FLA @ 600V AC	9A	11A	18A	27A

Horsepower Rating /HP	1 Phase		3 Phase		1 Phase		3 Phase		1 Phase		3 Phase	
	110-120V AC	3/4	1	1 1/2	2	3	2	3	3	5	3	5
200V AC	2	2	3	2	3	3	7.5	5	10	5	10	
208V AC	2	2	3	2	3	3	7.5	5	10	5	10	
220-240V AC	2	3	3	3	7.5	5	10	5	10	5	10	
265V AC	2	2	3	3	7.5	5	10	5	10	5	10	
277V AC	2	2	3	3	7.5	5	10	7.5	10	5	10	
380-415V AC	3	3	7.5	5	10	7.5	15	10	20	10	20	
440-480V AC	5	5	10	7.5	15	10	20	15	25	15	25	
550-600V AC	3	3	7.5	5	10	7.5	15	15	25	15	25	

Short Circuit Withstand Rating at 600 V with Max. Fuse Size/Class:	10kA	10kA	10kA	10kA
K5	50A	50A	50A	60A
RK5	50A	50A	50A	60A (80A @ 480V AC)
RK1	80A	80A	80A	100A
J	80A	80A	80A	100A

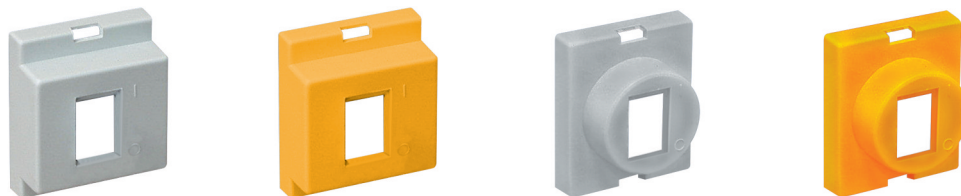
Terminal Size Acceptability (Cu Conductors only, 75°C)	14-8AWG	14-8AWG	14-8AWG	12-4AWG
Terminal Torque	16 lb. in.	16 lb. in.	16 lb. in.	16 lb. in.

Dimensions
(to convert to inches multiply by 0.03937)



Weight	0.19Kg (0.419lb.)	0.172Kg (0.379lb.)	0.172Kg (0.379lb.)	0.200Kg (0.441lb.)
--------	-------------------	--------------------	--------------------	--------------------

Suitable Accessories Cover Plate

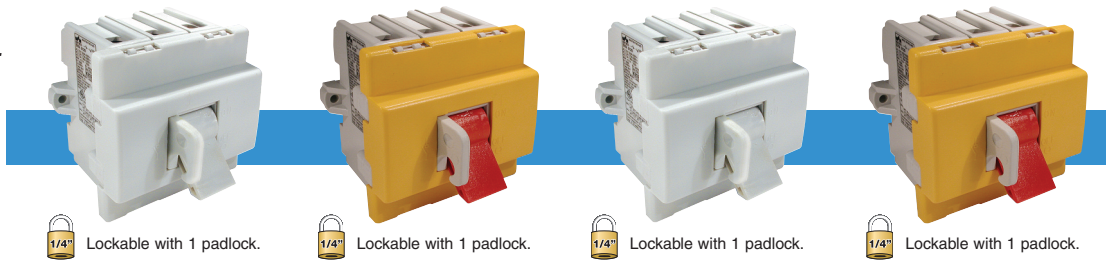


Cat. No.	K/KUE	K/KUEY	R/KUE	R/KUEY
Color	Grey	Yellow	Grey	Yellow
Shape	Rectangular	Rectangular	Circular	Circular

Dimensions (to convert to inches multiply by 0.03937)

Toggle Handle Motor Disconnect Switch

The EVA series includes a cover plate.



Catalog Number

White Cover/ White Handle
Yellow Cover/ Red Handle

EVA380 + K/EVA
EVA380 + K/EVA Y/R

EVA3100 + K/EVA
EVA3100 + K/EVA Y/R

EVA3125 + K/EVA
EVA3125 + K/EVA Y/R

EVA3160 + K/EVA
EVA3160 + K/EVA Y/R

No. of Poles	3	3	3	3
General Purpose Current	80A	100A	125A	150A
Maximum Voltage	600V AC	600V AC	600V AC	600V AC
Motor FLA @ 480V AC	—	—	—	—
Motor FLA @ 600V AC	47A	54A	68A	83A

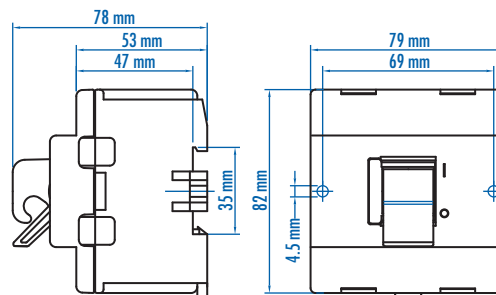
Horsepower Rating /HP	1 Phase		3 Phase		1 Phase		3 Phase		1 Phase		3 Phase	
	110-120V AC	3	7.5	3	7.5	5	10	5	10	7.5	10	7.5
200V AC	7.5	10	7.5	15	10	20	10	20	10	25	10	25
208V AC	7.5	15	7.5	15	10	20	10	20	10	25	10	25
220-240V AC	7.5	15	10	20	15	25	15	25	15	30	15	30
265V AC	10	20	10	20	15	25	15	25	20	30	20	30
277V AC	10	20	10	20	15	30	15	30	20	30	20	30
380-415V AC	15	25	15	30	20	40	20	40	25	50	25	50
440-480V AC	20	30	20	40	25	50	25	50	30	60	30	60
550-600V AC	25	40	30	50	30	60	30	60	40	75	40	75

Short Circuit Withstand Rating at 600 V with Max. Fuse Size/Class:	10kA		10kA		10kA		10kA	
K5	150A	150A	150A	150A	150A	150A	150A	150A
RK5	150A	150A	150A	150A	150A	150A	150A	150A
RK1	—	—	—	—	—	—	—	—
J	200A	200A	200A	200A	200A	200A	200A	200A

Terminal Size Acceptability (Cu Conductors only, 75°C)	4-1/0AWG	4-1/0AWG	4-1/0AWG	4-1/0AWG
Terminal Torque	50 lb. in.	50 lb. in.	50 lb. in.	50 lb. in.

Dimensions

(to convert to inches multiply by 0.03937)



Weight	0.480Kg (1.058lb.) (3 pole)	0.480Kg (1.058lb.) (3 pole)	0.480Kg (1.058lb.) (3 pole)	0.480Kg (1.058lb.) (3 pole)
--------	-----------------------------	-----------------------------	-----------------------------	-----------------------------



Special Black Toggle Handle Motor Disconnect Switch
EVA3100 + K/EVAB

Dimensions (to convert to inches multiply by 0.03937)