

COMPACT RELAY MODULE

CSR1S



CSR Series Relay Modules offer an extremely compact solution for interfacing relays. At 6 mm thickness, they are the most compact & versatile relay module system.

The system comprises of a Slim Relay socket and standard SPDT electro mechanical relays. Standard JX Series jumpers can be used for bussing at input and output of the relay sockets. A clear green LED indicates relay coil actuation. The compact relay modules are identified using standard K series marking tags.

GENERAL DATA

Dimension (Thickness x Length x Height)	6 x 94.5 x 96 mm
Insulating Material / Comparative Tracking Index	PA6,6 / 1
Mounting Possibility	DIN 35-15 ,DIN 35-7.5 Rail
Supply Voltage Indication	3 mm Green LED
Operating Voltage Range	5 V DC, 24 V DC, 12 V UC, 24 V UC, 48-60 V UC, 120 V UC, 230 V UC, 230 V AC

Connection Data

Type of Connection	Screw Connection		Spring Connection	
	IEC	UL-CSA	IEC	UL-CSA
Connection Possibility as per	With 1 Conductor per Clamp			
	Stranded / Flexible		Solid	
	with Ferrule / Lug			
With 2 same size Conductor per Clamp		with TWIN Ferrule / Lug		
0.2 - 2.5 mm ²		22 - 12 AWG		0.2 - 2.5 mm ² 24 - 12 AWG
0.2 - 4.0 mm ²		22 - 10 AWG		0.2 - 4.0 mm ² 24 - 10 AWG
0.2 - 2.5 mm ²		22 - 12 AWG		0.2 - 2.5 mm ² 24 - 12 AWG
0.2 - 1.5 mm ²		22 - 16 AWG		0.2 - 1.0 mm ² 24 - 18 AWG

Torque	0.5 Nm	7 lb-in
Wire Stripping Length	10 mm	

Relay General Specifications

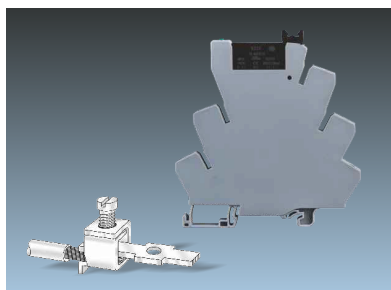
Relay Type	Electromechanical Relay
Insulation Test Voltage	4 KV AC (50 Hz, 1min)
Insulation Resistance	1000 MΩ at 500 V DC
Contact Material	AgNi
Contact Rating	6 A 250 V AC/ 30 V DC
Contact Type	SPDT (1CO)

ORDERING INFORMATION

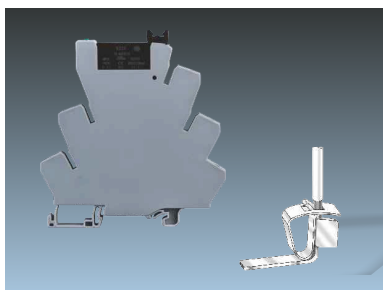
Input Voltages	Cat. No.	Std. Pk.	Cat. No.	Std. Pk.
	Screw Connection		Spring Connection	
5 V DC	CSR1S-5DYA	10	CSR1S-5DXA	10
24 V DC	CSR1S-24DYA	10	CSR1S-24DXA	10
12 V AC/DC	CSR1S-12UYA	10	CSR1S-12UXA	10
24 V AC/DC	CSR1S-24UYA	10	CSR1S-24UXA	10
48 - 60 V AC/DC	CSR1S-48-60UYA	10	CSR1S-48-60UXA	10
120 V AC/DC	CSR1S-120UYA	10	CSR1S-120UXA	10
230 V AC/DC	CSR1S-230UYA	10	CSR1S-230UXA	10
230 V AC	CSR1S-230AYA	10	CSR1S-230AXA	10

ACCESSORIES

Shorting Link		Cat. No.	Std. Pk.
		JX4/2	100
JX4/3	50		
JX4/4	50		
JX4/8	50		
JX4/10	10		
JX4/16	10		
Marking Tag		MT6	



Versatile Connection : Universal wiring possibility with the Screw Clamp Connection ensure safe termination of wire.



Versatile Connection : Universal wiring possibility with the Spring Clamp Connection ensure safe termination of wire.



Clear Marking: Distinct and legible marking with white marker, increases readability of wiring diagram.

COMPACT SSR MODULE

CSER1



CSER Series Relay Modules offer an extremely compact solution for interfacing relays with solid state technology. At 6 mm thickness they are the most compact & versatile relay module system.

The system comprises of a Slim Relay socket and standard solid state relays. Standard JX Series jumpers can be used for busing at input and output of the relay sockets. A clear green LED indicates input actuation. The compact relay modules are identified using standard K series marking tags.

CSER series comes with Zero Cross Turn on & Bipolar Transistor / MOSFET Output, This Series is compatible with TTL and CMOS Output.

GENERAL DATA

Dimension (Thickness x Length x Height)	6 x 94.5 x 96 mm				
Insulating Material / Comparative Tracking Index	PA6,6 / 1				
Mounting Possibility	DIN 35-15 ,DIN 35-7.5 Rail				
Supply Voltage Indication	3 mm Green LED				
Operating Voltage Range	24 V DC, 24 V UC, 48-60 V UC, 120 V UC, 230 V AC				
Connection Data					
Type of Connection	Screw Connection		Spring Connection		
Connection Possibility as per	IEC	UL-CSA	IEC	UL-CSA	
	With 1 Conductor per Clamp	Stranded / Flexible Solid with Ferrule / Lug	0.2 - 2.5 mm ² 0.2 - 4.0 mm ² 0.2 - 2.5 mm ²	22 - 12 AWG 22 - 10 AWG 22 - 12 AWG	0.2 - 2.5 mm ² 0.2 - 4.0 mm ² 0.2 - 2.5 mm ²
	With 2 same size Conductor per Clamp	with TWIN ferrule / Lug	0.2 - 1.5 mm ²	22 - 16 AWG	0.2 - 1.0 mm ² 24 - 18 AWG
Torque	0.5 Nm		7 lb-in		
Wire Stripping Length	10 mm				
Relay General Specifications					
Relay Type	Solid State Relay				
Breakdown Voltage (Input to output)	2.5 KV AC (50 Hz, 1min)				
Insulation Resistance	1000 MΩ at 500 V DC				
Contact Rating	48 V DC/4 A , 48 V DC/100 mA , 380 V AC/2A				
Contact Type	SPST (1NO)				

ORDERING INFORMATION

Input Voltages	Output Voltage / Current	Cat. No.		Std. Pk.	
		Screw Connection	Spring Connection	Screw Connection	Spring Connection
24 V DC	48 V DC / 4 A	CSER1-24D48D4YC	10	CSER1-24D48D4XC	10
	48 V DC / 100 mA	CSER1-24D48D100YC	10	CSER1-24D48D100XC	10
	380 V AC / 2 A	CSER1-24D380A2YC	10	CSER1-24D380A2XC	10
24 V AC/DC	48 V DC / 4 A	CSER1-24U48D4YC	10	CSER1-24U48D4XC	10
	48 V DC / 100 mA	CSER1-24U48D100YC	10	CSER1-24U48D100XC	10
	380 V AC / 2 A	CSER1-24U380A2YC	10	CSER1-24U380A2XC	10
	48 - 60 V AC/DC	48 V DC / 4 A	CSER1-4860U48D4YC	10	CSER1-4860U48D4XC
48 - 60 V AC/DC	48 V DC / 100 mA	CSER14860U48D100YC	10	CSER14860U48D100XC	10
	380 V AC / 2 A	CSER1-4860U380A2YC	10	CSER1-4860U380A2XC	10
	120 V AC/DC	48 V DC / 4 A	CSER1-120U48D4YC	10	CSER1-120U48D4XC
120 V AC/DC	48 V DC / 100 mA	CSER1-120U48D100YC	10	CSER1-120U48D100XC	10
	380 V AC / 2 A	CSER1-120U380A2YC	10	CSER1-120U380A2XC	10
	230 V AC	48 V DC / 4 A	CSER1-230A48D4YC	10	CSER1-230A48D4XC
230 V AC	48 V DC / 100 mA	CSER1-230A48D100YC	10	CSER1-230A48D100XC	10
	380 V AC / 2 A	CSER1-230A380A2YC	10	CSER1-230A380A2XC	10

ACCESSORIES

	Cat. No.	Std. Pk.
Shorting Link	JX4/2	100
	JX4/3	50
	JX4/4	50
	JX4/8	50
	JX4/10	10
	JX4/16	10
Marking Tag	MT6	



Easy Cross Connectivity : Cross connection possibility in five connection levels with Multi pole shorting links.



Easy exchange : Universal socket suitable for simple exchange of Solid state relay and Electromechanical Relay.



Clearly visible Green LED to indicate relay coil actuation.