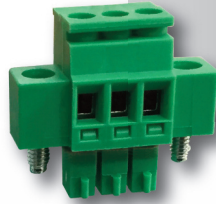


# PCB Plug-In Connectors

## 3.50 mm Pin Spacing

- Vertical Plug
- 11A Current Rating
- Screw Flange
- Wire Entry on Coding Side



# SVFxx-3,50-K

### Electrical Ratings

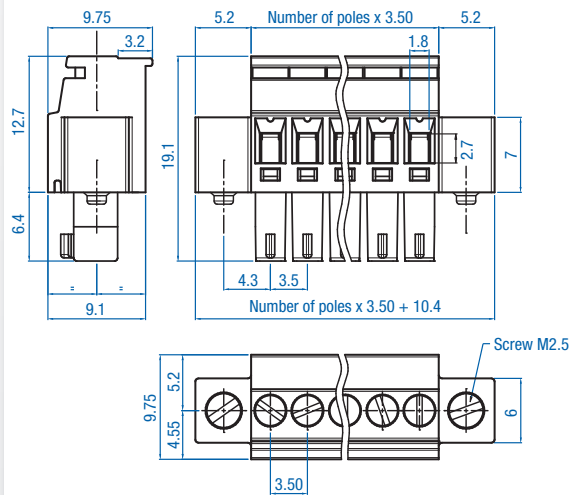
Usergroup	B	C	D	-
Rated Voltage	300V	-	300V	160V
Rated Current	11A	-	11A	8A
Wire Size	<i>solid</i> 30-14AWG <i>stranded</i> 30-14AWG	-	30-14AWG	0.25mm <sup>2</sup> -1.5mm <sup>2</sup> 0.25mm <sup>2</sup> -1.5mm <sup>2</sup>



### Ordering Information (3.50 mm Spacing)

No. Poles	Order #	Length (mm)	Std. Pack
2	SVF02-3,50-K	17.4	100
3	SVF03-3,50-K	20.9	100
4	SVF04-3,50-K	24.4	50
5	SVF05-3,50-K	27.9	50
6	SVF06-3,50-K	31.4	50
7	SVF07-3,50-K	34.9	50
8	SVF08-3,50-K	38.4	50
9	SVF09-3,50-K	41.9	50
10	SVF10-3,50-K	45.4	50
11	SVF11-3,50-K	48.9	50
12	SVF12-3,50-K	52.4	50
13	SVF13-3,50-K	55.9	20
14	SVF14-3,50-K	59.4	20
15	SVF15-3,50-K	62.9	20
16	SVF16-3,50-K	66.4	20
17	SVF17-3,50-K	69.9	20
18	SVF18-3,50-K	73.4	20
19	SVF19-3,50-K	76.9	20
20	SVF20-3,50-K	80.4	20
21	SVF21-3,50-K	83.9	20
22	SVF22-3,50-K	87.4	20
23	SVF23-3,50-K	91.9	20
24	SVF24-3,50-K	94.4	20

### Dimensions (mm)



### Material Specifications

Screws	Galvanized Steel
Clamp	Nickel Copper Alloy
Contact Spring	Nickel Copper Alloy
Insulating Material	Polyamide
Flammability Class	V0 UL94
Operating Temperature	-30°C - +105°C

### Installation Data

Screw Size	M2 (terminal), M2.5 (flange)
Torque	0.25Nm (2.3 lb.in.)
Stripping Length	max. 7mm
Clamp Opening	1.8 x 2.7 mm

### Mating Headers

#### Single Row

PVxx-3,50-K      PHxx-3,50-K

#### Double Row

PDVxx-3,50-V-K      PDVxx-3,50-H-K