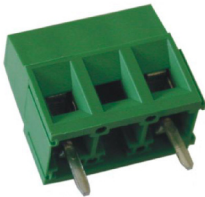


PCB Terminal Block

- 10.16 mm Pin Spacing
- Board Mount PCB
- 17.5A Current Rating
- Height 13.2mm
- Modular / Stackable, no dovetail version



MVS15xx-10,16-V

Front Wire Entry



Electrical Ratings

		<div> <div> <div>C</div> <div>UL</div> <div>US</div> </div> <div>E178356</div> </div>		<div> <div>IEC</div> <div>N.40019705</div> </div>
Usergroup	B	C	D	-
Rated Voltage	600V	-	600V	750V
Rated Current	17.5A	-	17.5A	17.5A
Wire Size	<i>solid</i> 30-16 AWG	-	30-16 AWG	0.25mm <sup>2</sup> - 2.5mm <sup>2</sup>
	<i>stranded</i> 30-16 AWG	-	30-16 AWG	0.25mm <sup>2</sup> - 1.5mm <sup>2</sup>

Ordering Information

No. Poles	Length (mm)	Std. Pack	Order # - Modular	Order # - No Dovetails
2	15.24	100	MVS152-10,16-V	MVS152-10,16-V-L
3	25.40	100	MVS153-10,16-V	MVS153-10,16-V-L
4	35.56	100	MVS154-10,16-V	MVS154-10,16-V-L
5	45.72	100	MVS155-10,16-V	MVS155-10,16-V-L
6	55.88	100	MVS156-10,16-V	MVS156-10,16-V-L
7	66.04	100	MVS157-10,16-V	MVS157-10,16-V-L
8	76.20	100	MVS158-10,16-V	MVS158-10,16-V-L
9	86.36	100	MVS159-10,16-V	MVS159-10,16-V-L
10	96.52	100	MVS1510-10,16-V	MVS1510-10,16-V-L
11	106.68	100	MVS1511-10,16-V	MVS1511-10,16-V-L
12	116.84	100	MVS1512-10,16-V	MVS1512-10,16-V-L

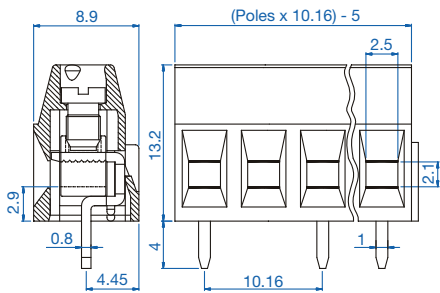
Material Specifications

Clamp	Nickel Copper
Solder tab	Tin-Plated Copper
Screw	Galvanized Steel
Insulating Material	Polyamide
Flammability Class	V0 UL94
Operating Temperature	-30°C - +105°C

Installation Data

Screw Size	M3
Torque	0.5Nm (4.5 lb.in.)
Stripping Length	max. 7mm
Clamp Opening	2.5 x 2.1mm
PCB Hole Size	1.5mm

Dimensions (mm)



Drilling Diagram

