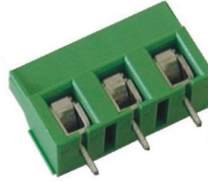


PCB Terminal Block

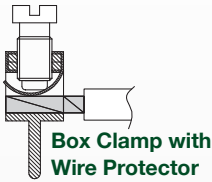
7.50 mm Pin Spacing

- Board Mount PCB
- 17.5A Current Rating
- Height 13.5mm
- Modular



MVE17xx-7,5-V

Front Wire Entry



Electrical Ratings

	C ^{UL} US E178356		IEC VDE N.40019705	
	B	C	D	-
Usergroup	B	C	D	-
Rated Voltage	300V	150V	300V	750V
Rated Current	20A	-	20A	24A
Wire Size	<i>solid</i> 30-14 AWG <i>stranded</i> 30-14 AWG	-	30-14 AWG	0.25mm ² - 2.5mm ²

Ordering Information

No. Poles	Length (mm)	Std. Pack	Order #
2	15.0	100	MVE172-7,5-V
3	22.5	100	MVE173-7,5-V
4	30.0	100	MVE174-7,5-V
5	37.5	100	MVE175-7,5-V
6	45.0	100	MVE176-7,5-V
7	52.5	100	MVE177-7,5-V
8	60.0	100	MVE178-7,5-V
9	67.5	100	MVE179-7,5-V
10	75.0	100	MVE1710-7,5-V
11	82.5	100	MVE1711-7,5-V
12	90.0	100	MVE1712-7,5-V

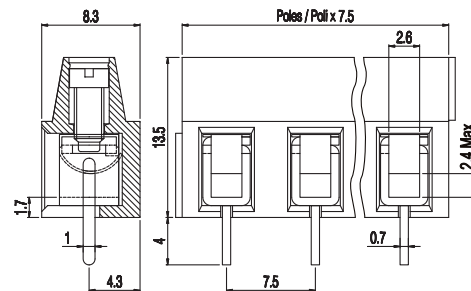
Material Specifications

Clamp	Tin-Plated Copper
Solder tab	Tin-Plated Copper
Screw	Galvanized Steel
Insulating Material	Polyamide
Flammability Class	V0 UL94
Operating Temperature	-30°C - +105°C

Installation Data

Screw Size	M2.5
Torque	0.4 Nm (3.6 lb.in.)
Stripping Length	max. 7mm
Clamp Opening	2.6 x 2.4mm
PCB Hole Size	1.5mm

Dimensions (mm)



Drilling Diagram

