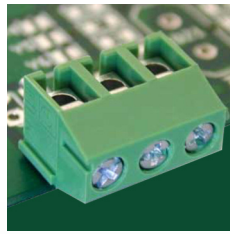


# PCB Terminal Block

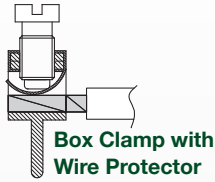
3.81 mm Pin Spacing

- Board Mount PCB
- 6A Current Rating
- Height 6.8mm
- Modular



# MLK13xx-3,81-H

Top Wire Entry



### Electrical Ratings

	B	C	D	
Usergroup	B	C	D	-
Rated Voltage	300V	-	300V	130V
Rated Current	6A	-	6A	10A
Wire Size	<i>solid</i> 24-16 AWG	-	24-16 AWG	0.25mm <sup>2</sup> - 1.5mm <sup>2</sup>
	<i>stranded</i> 24-16 AWG	-	24-16 AWG	0.25mm <sup>2</sup> - 1.0mm <sup>2</sup>



### Ordering Information

No. Poles	Length (mm)	Std. Pack	Order # - Modular
2	7.62	500	MLK132-3,81-H
3	11.43	500	MLK133-3,81-H
4	15.24	500	MLK134-3,81-H
5	19.05	500	MLK135-3,81-H
6	22.86	200	MLK136-3,81-H
7	26.67	200	MLK137-3,81-H
8	30.48	200	MLK138-3,81-H
9	34.29	200	MLK139-3,81-H
10	38.10	200	MLK1310-3,81-H
11	41.91	100	MLK1311-3,81-H
12	45.72	100	MLK1312-3,81-H
13	49.53	100	MLK1313-3,81-H
14	53.34	100	MLK1314-3,81-H

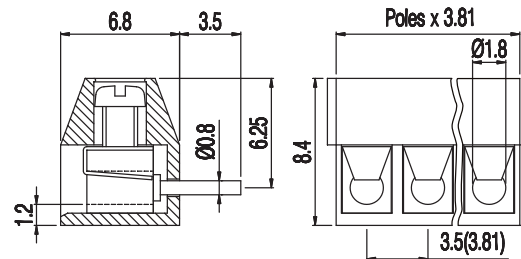
### Material Specifications

Clamp	Nickel-Copper
Solder tab	Tin-Plated Copper
Screw	Galvanized Steel
Insulating Material	Polyamide
Flammability Class	V0 UL94
Operating Temperature	-30°C - +105°C

### Installation Data

Screw Size	M2
Torque	0.2Nm (1.8 lb.in.)
Stripping Length	max. 6mm
Clamp Opening	1.8 x 1.8mm
PCB Hole Size	1.3mm

### Dimensions (mm)



### Drilling Diagram

