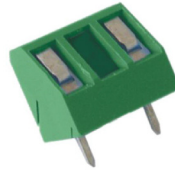


PCB Terminal Block

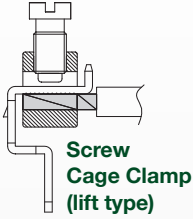
10.16 mm Pin Spacing

- Board Mount PCB
- 24A Current Rating
- Height 12.5mm
- Modular



MIP25xx-10,16-IQ

45° Angled Wire Entry



Electrical Ratings		UL US E178356		IEC	VDE N.40019705
Usergroup	B	C	D	-	
Rated Voltage	300V	-	300V	750V	
Rated Current	24A	-	24A	24A	
Wire Size	<i>solid</i> 30-12 AWG	-	30-12 AWG	0.25mm ² - 4.0mm ²	
	<i>stranded</i> 30-12 AWG	-	30-12 AWG	0.25mm ² - 2.5mm ²	

Ordering Information

No. Poles	Length (mm)	Std. Pack	Order #
2	15.24	100	MIP252-10,16-IQ
3	25.40	100	MIP253-10,16-IQ
4	35.56	100	MIP254-10,16-IQ
5	45.72	100	MIP255-10,16-IQ
6	55.88	100	MIP256-10,16-IQ
7	66.04	100	MIP257-10,16-IQ
8	76.20	100	MIP258-10,16-IQ
9	86.36	100	MIP259-10,16-IQ
10	96.52	100	MIP2510-10,16-IQ
11	106.68	100	MIP2511-10,16-IQ
12	116.84	100	MIP2512-10,16-IQ

Material Specifications

Clamp	Nickel-Copper
Solder tab	Tin-Plated Copper
Screw	Galvanized Steel
Insulating Material	Polyamide
Flammability Class	V0 UL94
Operating Temperature	-30°C - +105°C

Installation Data

Screw Size	M3
Torque	0.5Nm (4.5 lb.in.)
Stripping Length	max. 8mm
Clamp Opening	2.8 x 2.8mm
PCB Hole Size	1.5mm

