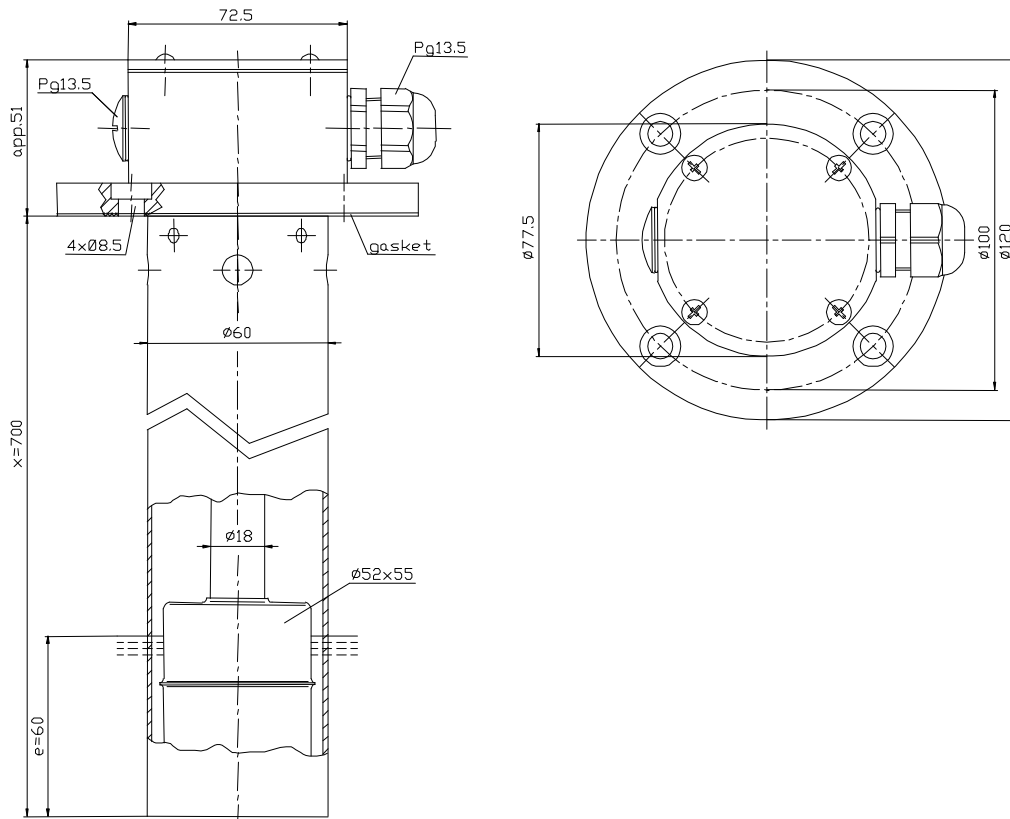


### Adjustable float switches

Description

**MAP-VST-FLS120/700**

Article number **6880226019**



#### Electrical data

Reed contact	mechanical life	$10^7$ to $10^9$ switches depending on the load
Switching function		adjustable switching points on a 10mm scale
Matching switching modules		<b>ATTENTION! Devices without switching modules.</b> Art.-Nr.: 491.0007.069 N.O. / N.C. contact Art.-Nr.: 491.6007.075 switch-over contact
Standard		There are separate data sheets for the technical data of the switching moduls. Please request. acc. to DIN VDE 0660 T200 IEC 947-5-1, EN 60947-5-1

#### Mechanical data

Terminal box material	GK-AISI12 (3.2581.02)
Screw connection material	PA
Switching tube material	CuZn37 (2.0321)
Protective conduite material	aluminium
Float material	X6CrNiMoTi17-12-2 (1.4571)
-density	about 0,6 g/cm <sup>3</sup> ±10%
-depth of immersion	33 mm ±2 mm ( to a fluid-density of 1 g/cm <sup>3</sup> )
Gasket material	NBR
Ambient air temperature	-5°C to +100°C
Liquid temperature	-5°C to +100°C
Protection type	IP 65 acc to DIN VDE 0470 T1 IEC 529, EN 60529
Max. pressure	5 bar

#### General details

Repeatability of switching points is  $\pm 0,05$ mm based on the same geometrical conditions as of a switch device.  
The measures of the switching points refer to a fluid-density of 1 g/cm<sup>3</sup>.  
The tolerance of the switching points is  $\pm 2$ mm  
Pay attention to the contact protection, when switching inductive loads. Maximum data must not be exceeded!

Subject to change without notice.

Date of issue : 22.03.2007 / Page 1 of 1  
Document : 6880226019\_en.doc / Last update : 1