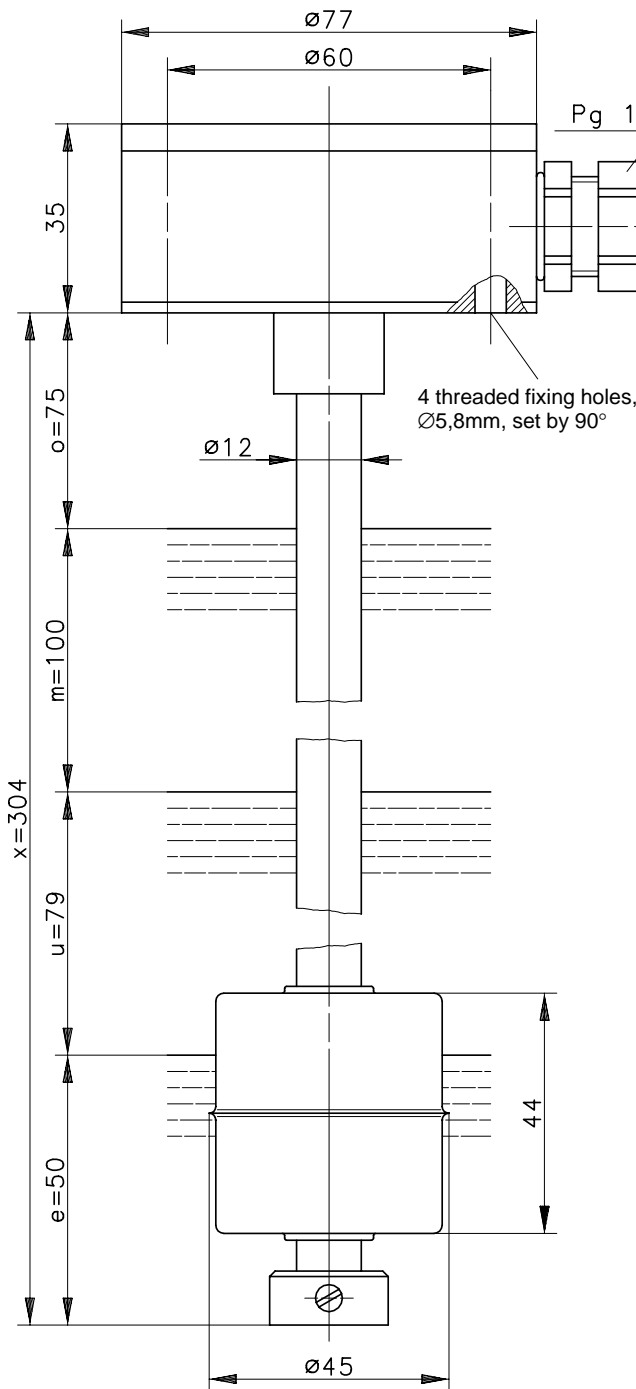




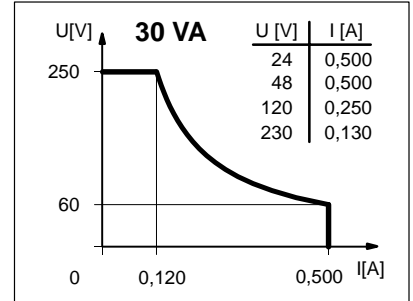
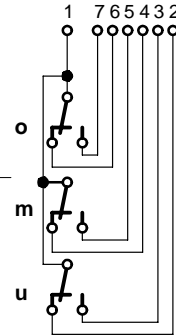
Type: **MAN-733 KSS 0304**

Art.-No.: **683.5125.094**

Date: **0978/06.08.1998**



#### Switching diagramme



#### Technical Data:

- Max. Voltage : 250 V
- Max. Switch Current : 0.5 A
- Max. Switching : 30 VA
- Direction Category : AC-22A and DC-22A acc. DIN VDE 0660 T107 IEC 947-3-1, EN 60947-3-1
- Pay attention to the contact protection, when switching inductive loads.
- Protection class : IP 65 acc. to DIN VDE 0470 T1 IEC 529, EN 60529
- Output function : 3 change over contacts, falling level
- Temperature range :  $-5^\circ\text{C} \dots +100^\circ\text{C}$
- mech. Lifetime :  $10^7-10^9$  switchings depends the load
- Repeat Accuracy :  $\pm 0.05\text{mm}$  (only under same geometrical conditions)

#### Mechanical Data:

- Terminal box : Aluminium
- Switching tube : Stainless steel 1.4571
- Float : Stainless steel 1.4571
- Adjusting ring : Stainless steel 1.4571
- Standard : acc. DIN VDE 0660 T200 IEC 947-5-1, EN 60947-5-1