

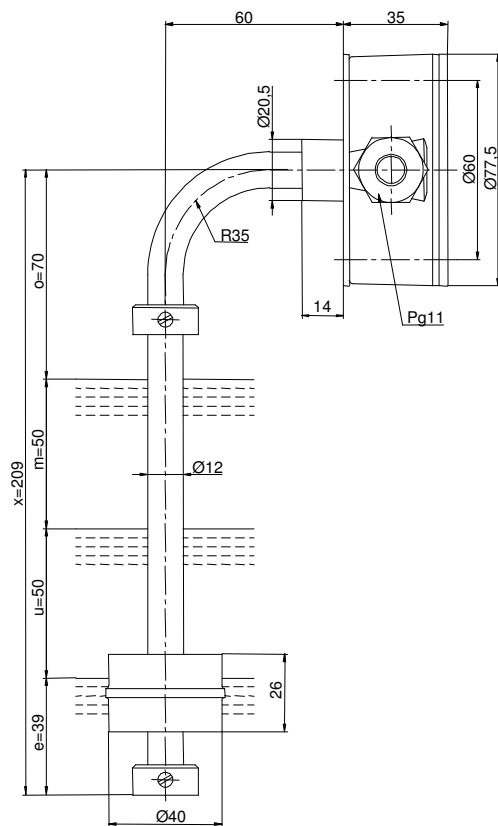
# Technical Data

## Float Switch

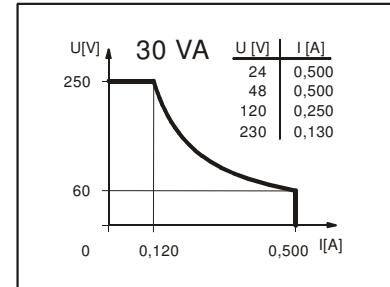
### Standard float switch

Description **MAA-733 KBS 0209**

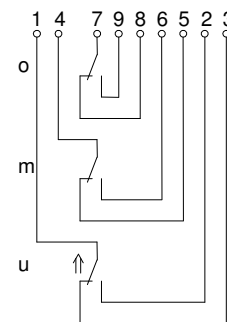
Article number **6835115020**



**Performance diagram**  
(maximum data)



**Wiring diagram**  
(matching to the drawing)



### Electrical data

Reed contact	max. switching voltage	250V
	max. switching current	0,5A
	max. switching capacity	30VA
	mechanical life	10 <sup>7</sup> to 10 <sup>9</sup> switches depending on the load
Switching element		3 change-over contact, falling level
Direction category		AC-21A and DC-21A acc to DIN VDE 0660 T107
Standard		acc to DIN VDE 0660 T200

### Mechanical data

Terminal box material	GK-AlSi12 (3.2581.02)
Switching tube material	X 6 CrNiMoTi 17 12 2 (1.4571)
Float material	POM
-density	about 0,7 g/cm <sup>3</sup> ±10%
-depth of immersion	18 mm ±2 mm ( to a fluid-density of 1 g/cm <sup>3</sup> )
Adjusting ring material	X 6 CrNiMoTi 17 12 2 (1.4571)
Gasket material	NBR
Ambiente air temperature	-5 °C bis +100 °C
Medium temperature	-5 °C bis +100 °C
Connection	connecting block inside the terminal box
Protection type	IP 65 acc to DIN VDE 0470 T1
Max. pressure	10 bar

### General details

Reproducibility of switching points is ±0,05mm based on the same geometrical conditions as of a switch device.  
The measures of the switching points refer to a fluid-tight of 1 g/cm<sup>3</sup>.  
The tolerance of the switching points is ±2mm  
Pay attention to the contact protection, when switching inductive loads. Maximum data must not be exceeded!

Subject to change without notice.