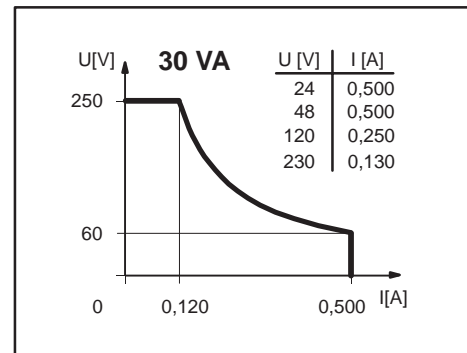


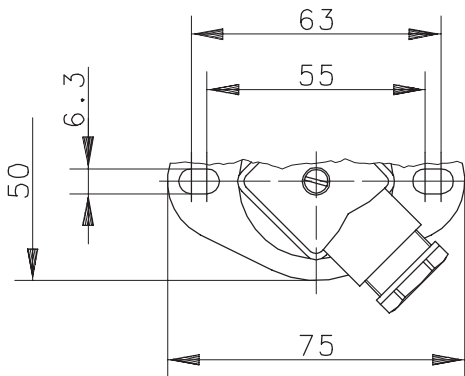
Performance diagram
(maximum data)



Electrical Data (maximum data) :

- contact
 - max. voltage : 250 V
 - max. switching current : 0.5 A
 - max. switching capacity : 30 VA
- switching function : o = normally open, falling level
u = normally open, falling level
- direction category : AC-21A and DC-21A
acc. to DIN VDE 0660 T107
(IEC 947-3-1 / EN 60947-3-1)
- standard : acc. to DIN VDE 0660 T200
(IEC 947-5-1 / EN 60947-5-1)

Pay attention to the contact protection, when switching inductive loads. Maximum data must not be exceeded !



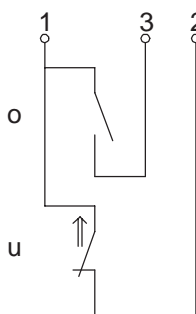
Technical Data :

- mode of connection : connector acc. to DIN 43650
- protection type : IP 65 acc. to DIN VDE 0470 T1
(IEC 529 / EN 60529)
only with female socket
- temperature range : form -5°C to +60°C
- fluidtemperature : form -5°C to +60°C
- max. pressure : 5 bar
- mech. lifetime : 10⁷ to 10⁹ switches depending on the load

Reproducibility is ±0.05mm under same geometrical conditions according to one switch device.

Wiring diagram

(matching to the drawing)



ATTENTION :

The measures of the switching points are related to a fluid-tight of 1 g/cm³
The tolerance of the switching points are ±2 mm

Mechanical Data :

- flangematerial : PA 66
- switching tube material : CuZn37 (2.0321)
- float material : NBR
- tightness : about 0.45 g/cm³ ±10%
- depth of immersion : 19.5 mm ±2 mm (to a fluid-tight of 1 g/cm³)
- guard ring material : CuSn8 (2.1030)
- gasket material : NBR

created 26.10.01 Schömbier
checked 26.10.01 Häßler

This copy will not be amended or withdraw when technical changes are necessary.