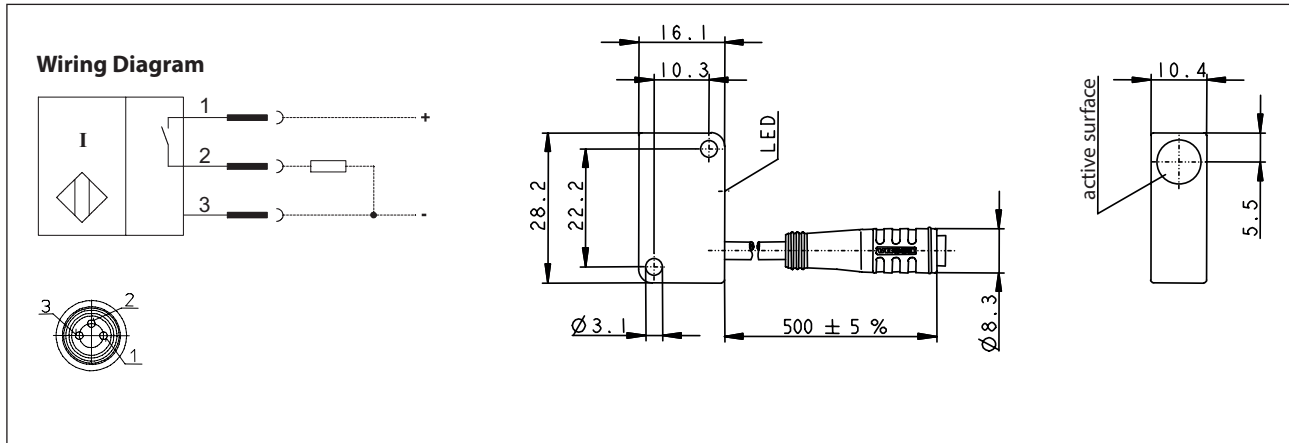


Inductive Proximity Switch Series E28

Description **KIN-E28PS/003-KL0,5R06**

Article number **6602973241**



Identifying characteristics in accordance with EN 60947-5-2

Electrical data		
Rated operating distance	S_n	3 mm
Standard target		12 mm x 12 mm, t = 1 mm, material: FE360
Real sensing distance	S_r	2,7 ... 3,3 mm
Assured operating distance	S_a	0 ... 2,4 mm
Switching element function		DC, N.O.
Repeat accuracy	R	≈ 5 %
Differential travel (hysteresis)	H	≈ 10 %
Operational voltage range	U_B	10 - 30 V DC
Rated insulation voltage	U_i	75 V DC
Rated impulse withstand voltage	U_{imp}	500 V
Voltage drop	U_d	≤ 1,6 V (add. 0,06V per m cable and 200mA Load at 20°C)
Utilization category		DC 13
Rated operational current	I_e	200 mA
Minimum operating current	I_m	≤ 1 mA
Off-state current	I_r	< 0,1 mA
No-load supply current	I_o	≤ 11 mA
Switching element		Permanent overload and s.c.p.
Short-circuit protection		pulsed
Frequency of operating cycles	f	400 Hz
Mounting		non flush
False polarity protection		yes
Time delay before availability	t_v	< 50 ms

Electromagnetic compatibility (EMC)	
Electromagnetic field test	IEC 61000-4-3
Electrostatic discharge test	IEC 61000-4-2
Electrical fast transient immunity test	IEC 61000-4-4
Radiated disturbance field strength	EN 55011

Mechanical Data	
Enclosure	PA 6.6, black
Ambient air temperature	-25 °C ... +70 °C
Type of protection	IP67 (only in fully locked position with it's plugs)
Degree of pollution	3 (pollution of the active region, there can may be a deterioration of the operating distance)
Indication	LED, yellow
Termination type	Cable 3 x 0,14 mm ² with Plug connection – female; PUR, black

EU Conformity	
acc. to directive 2014/30/EU	