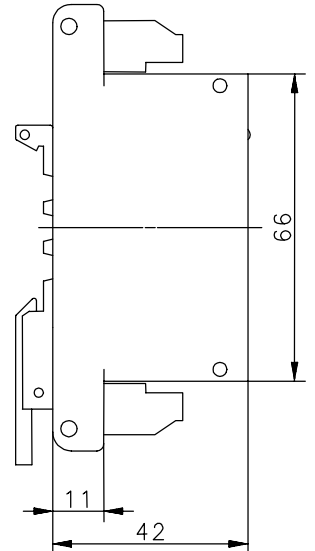
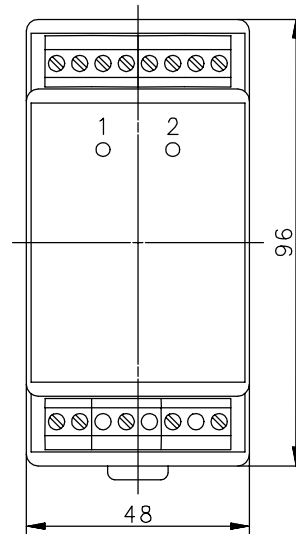
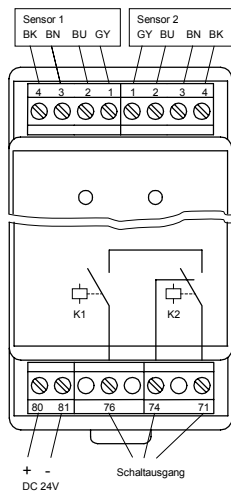


Series MÜZ-202

Type designation **MÜZ-202/D24-UM**

Item number **6392702301**

Connection



Operating data

Rated operational voltage 80-81	U_e	DC 24V
Operational voltage range	U_B	DC 21 ... 27V
Rated operational current	I_e	< 0,1A
Rated insulation voltage	U_i	250V

Output data / Relay output

Max. switching voltage	AC 250V
Max. switched current	8A
Max. switching capacity	1700VA
Utilization category	AC 15: 230V / 3A DC 13: 24V / 2A
Output function	N.O.
Material of contacts	Series connection of two Relays with direct opening action NC contact for signaling

Operating and environmental conditions

Temperature range:	Ambient operating temperature	0°C ... +55°C
	Transport and storage temperature	-25°C ... +70°C
Type of protection		IP 20 according to IEC 529, EN 60529 to the installation in switchgear cabinet with IP54
Pollution degree		3 nach EN 60947-1
Enclosure		Material PA 6.6 Quick snap for mounting rails according to DIN 50022 Screw terminals for wires (litz wire) from 0,25mm ² to 2,5mm ²
Indication	LED red	Indication of a none properly locked protective device (not actuated)
Sensor Unit		Magnetic Proximity Switch Type MAx-xx36 (2 Sensor Units; in use of 1 Sensor Unit: Pin 3 and 4 of the unused sensor terminals have to be bridged)

This document will not become the contractual basis; the details included herein do not constitute any descriptions of expected conditions, so that warranties/claims for defects on account of possible variations of the actual from the here described condition are excluded. Subject to modifications and amendments.

Date of issue: 16.06.2005 / Page 1 of 1
Document: 6392702301_en / Last update: 1 / 0445-05