

Technical Data

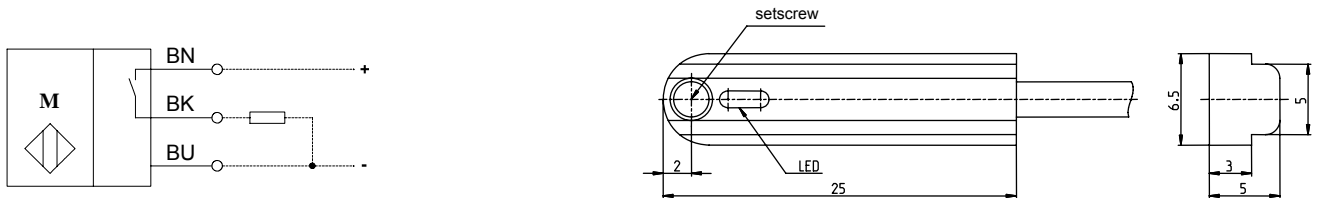
Magnetic sensors

Series E30

Type designation **MEA-E30PS/HP1-KL2**

Item number **6372299158**

Wiring Diagram



Identifying characteristics in accordance with EN 60947-5-2

Electrical data

Magnetic sensitivity		Factory setting 3 mT (south activated) adjustable 0,8 mT ... 27 mT (north / south activated)
Switching element function		DC, N.O., open collector
Repeat accuracy	R	≤ 0,1 mT (constant U_B and ambient air temperature)
Differential travel (hysteresis)	H	factory setting 0,8 mT; ≥ 0,3 mT adjustable
Operational voltage range	U_B	10 - 30 VDC
Rated insulation voltage	U_i	75 VDC
Voltage drop	U_d	< 2 V @ 50 mA
Utilization category		DC-12
Rated operational current	I_e	≤ 50 mA
Leakage current		< 25 μ A
No-load supply current	I_o	< 10 mA (not actuated)
Switching element		Hall
Short-circuit protection		pulsed
Mounting		from side into a T-Groove
False polarity protection		yes

Electromagnetic compatibility (EMC)

Electromagnetic field test	IEC 61000-4-3
Electrostatic discharge test	IEC 61000-4-2
Electrical fast transient immunity test (Burst)	IEC 61000-4-4
Conducted disturbances, inducted by high frequency electromagnetic fields	IEC 61000-4-6
Radiated disturbance field strength	EN 55011

Mechanical data

Enclosure	AlMgSi0,5 (Aluminium)
Ambient air temperature	-20°C ... +80°C (cable fixed mounted)
Type of protection	IP 67 acc. to IEC 529, EN 60529
Function indication	LED, yellow; output activated
Termination type	Cable 3 x 0,05 mm ² x 2 m ± 5 %, PUR-Outer jacket
Attachment	1 x setscrew M3x6-A2-70 1 x magnetic programming tool

EU Conformity

acc. to Directive 2004 / 108 / EC

This document will not become the contractual basis; the details included herein do not constitute any descriptions of expected conditions, so that warranties/claims for defects on account of possible variations of the actual from the here described condition are excluded. Subject to modifications and amendments.

Date of issue: 26.10.2011 / Page 1 of 1
Document: 6372299158_en.doc / Last update: 1 / 0022-11