

# Technical Data

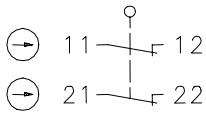
## Plastic bodied limit switch

### Series I88

Description **I88-A2Z W IP67**

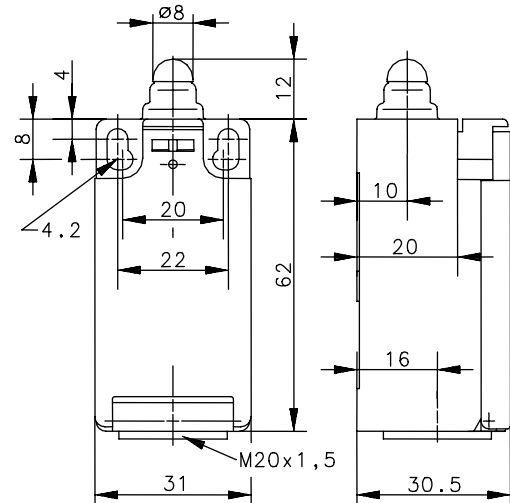
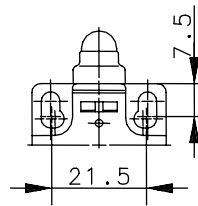
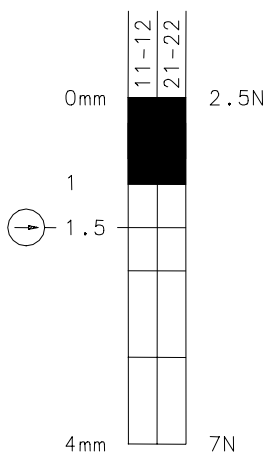
Article number **6186803678**



#### Operating symbol



Fixed positioning for  
safety applications  
Mounting screw  
according to DIN 912 M5

#### Operating diagram




  Tolerance:  
 Operating point  $\pm 0,25\text{mm}$ ;  
 Operating force  $\pm 10\%$

#### Breaking capacity DC

Rated operational voltage	$U_e$	110 V DC
Rated operational current	$I_e$	0,7 A
Switching frequency		$\leq 60/\text{min}$
Mechanical life		$1 \times 10^6$ switching cycles
Load		ohmsch

#### Electrical data

Rated insulation voltage	$U_i$	250 V AC
Conv. thermal current	$I_{the}$	5 A AC
Rated operational voltage	$U_e$	240 V AC
Utilization category		AC-15, $U_e/I_e$ 240 V / 1,5 A DC-13, $U_e/I_e$ 24 V / 1 A
Positive opening NC contact		acc. to IEC/EN 60947-5-1, Annex K
Short-circuit protective device		Fuse 6 A gG
Protection class		II, totally insulated

This document will not become the contractual basis; the details included herein do not constitute any descriptions of expected conditions, so that warranties/claims for defects on account of possible variations of the actual qualities from the qualities described herein are explicitly excluded. All rights reserved. Specifications subject to change without notice!

Date of issue: 17.01.2012 / Page 1 of 2  
Document : 6186803678\_en / Last update : 2 / 2018-12

# Technical Data

## Plastic bodied limit switch



Mechanical data	
Enclosure	Thermoplastic, glass fibre reinforced (UL 94-V0)
Cover	Thermoplastic, glass fibre reinforced (UL 94-V0)
Actuator	Plunger (thermoplastic)
Ambient air temperature	-30 °C ... +80 °C
Contact type	2 NC (Zb)
Mechanical life	1 x 10 <sup>6</sup> switching cycles
Switching frequency	≤ 100/min
Assembly	2 x M4
Connection	4 screw connections (M3)
Conductor cross-sections	Solid: 0.5 ... 1.5 mm <sup>2</sup> Litz wire with ferrules: 0.5 ... 1.5 mm <sup>2</sup>
Cable entrance	1 x M20 x 1,5
Weight	≈ 0.06 kg
Installation position	Operator definable
Protection type	IP67 acc. to IEC/EN 60529

### Actuation

The push bolt actuator is mainly intended to be actuated along it's axis.  
Side actuation will considerably reduce switch life.

<b>Standards</b>	VDE 0660 T100, DIN EN 60947-1, IEC 60947-1 VDE 0660 T200, DIN EN 60947-5-1, IEC 60947-5-1
------------------	--

<b>EU Conformity</b>	acc. to directive 2006/95/EG
----------------------	------------------------------

<b>Approvals</b>	cCSA <sub>US</sub> B300 (same polarity)
------------------	---

### Notes

The degree of protection specified (IP code) applies only to a properly closed cover and the use of an equivalent cable gland with adequate cable.

This document will not become the contractual basis; the details included herein do not constitute any descriptions of expected conditions, so that warranties/claims for defects on account of possible variations of the actual qualities from the qualities described herein are explicitly excluded. All rights reserved. Specifications subject to change without notice!

Date of issue: 17.01.2012 / Page 2 of 2  
Document : 6186803678\_en / Last update : 2 / 2018-12