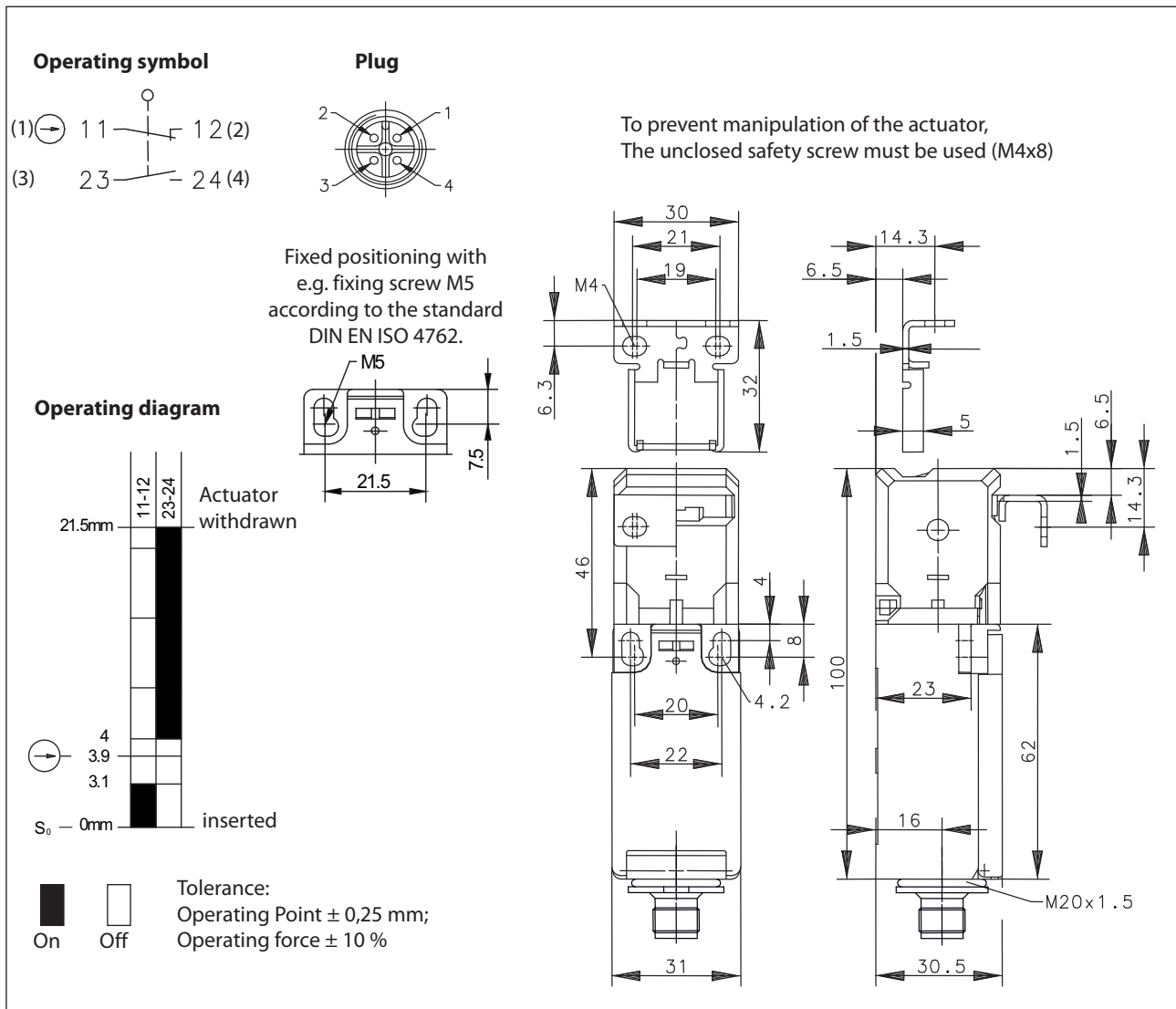


## Safety switch Series SKI – with separate actuator

Description **SKI-U1Z FI50 M3 X**

Article number **6116819260**

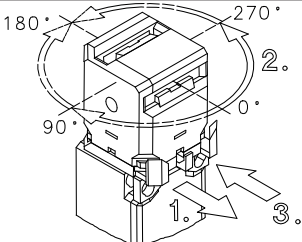


Electrical Data		
Rated insulation voltage	$U_i$	250 V AC
Conv. thermal current	$I_{the}$	3 A
Utilization category		AC-15, $U_e/I_e$ 240 V / 3 A
Direct opening action		acc. to IEC/EN 60947-5-1, annex K
Short-circuit protective device		Fuse 2 A gG
Protection class		II, totally insulated

Mechanical data	
Enclosure	Thermoplastic, glass fibre reinforced (UL 94-V0)
Cover	Thermoplastic, glass fibre reinforced (UL 94-V0)
Actuator	Separate actuator (metal)
Extraction force	50 N
Ambient air temperature	-30° C ... +80° C
Contact type	1 NC, 1 NO (Zb)
Mechanical life	1 x 10 <sup>6</sup> operating cycles
Increased operating force	1 x 10 <sup>5</sup> operating cycles
Switching frequency	≤ 30 / min.
Assembly	Safety switch
	Actuator
Connection	Plug M12 x 1, A-Code
Cable entrance	1 x M20 x 1,5
Weight	≈ 0,2 kg
Installation position	operator definable
Protection type	IP65 acc. to IEC/EN 60529

ID for safety engineering	
B10d	2 x 10 <sup>6</sup> cycles

Actuation	
To achieve the 8 different actuator points please follow the next instructions	
(1)	pull fixing clamp
(2)	turn actuator
(3)	push fixing clamp



Standards	
	VDE 0660 T100, DIN EN 60947-1, IEC 60947-1
	VDE 0660 T200, DIN EN 60947-5-1, IEC 60947-5-1
	DIN EN ISO 13849-1

EU Conformity	
	acc. to directive 2006/42/EC (Safety-of-Machinery-Directive)

Approvals	
	CCC
	cCSA <sub>US</sub> A300 (same polarity)

**Notes**

The degree of protection specified (IP code) applies only to a properly closed cover and the use of an equivalent connector.

The switch may not be used as a mechanical stop.

Radial actuation may reduce the mechanical life.

The min. radius refers to a pivot at the top of the cap (S0).

Tapped holes not in use must be closed with blind plugs.

For use with the described ambient temperature, the plug and cable (fixed or flexible installation) must be suitable for at least the same temperature range.

The plug must not be connected and disconnected under voltage.

The mechanical life of the cable box are 500 cycle of operation.

To comply with the approvals need to use proper plugs and cables.

