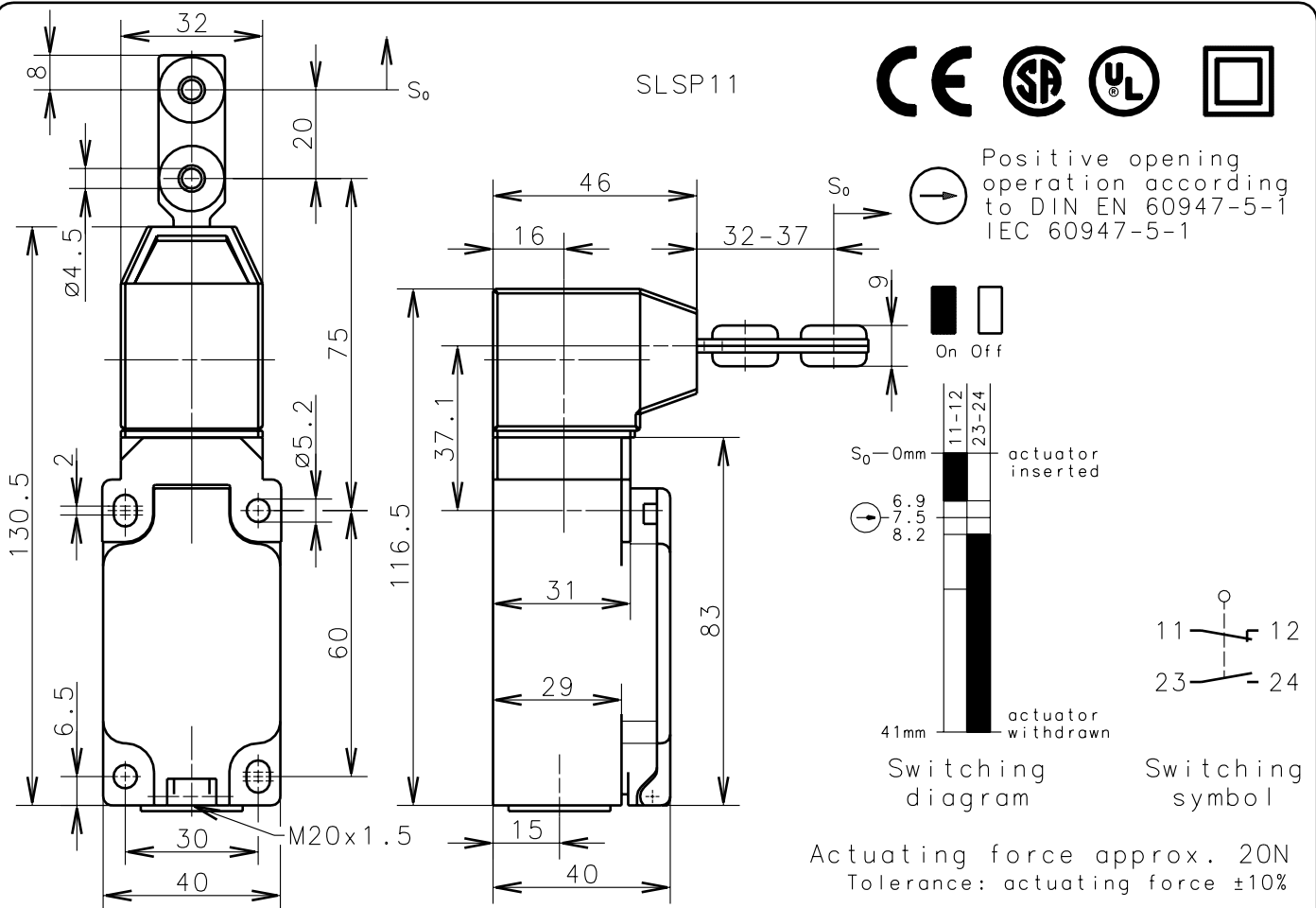


**Bernstein**Bernstein AG
Postfach 1164
D-32437 Porta Westfalica**Technical data sheet****ENK-U1Z VTU****611.6619.136**Schutzvermerk nach DIN 34 beachten
Copyright reserved**Mechanical features**

Enclosure:	Thermoplast, glass fibre reinforced
Cover:	Thermoplast, glass fibre reinforced
Actuator:	Separate actuator (St/PA), actuating head (PA6 GV/Zn-GD)
Ambient air temperature:	-30°C up to +80°C
Contact type:	1 NC-contact, 1 NO-contact (Zb)
Mechanical life:	1x10 ⁶ switch operations
Switch frequency:	max. 30/min
Mounting:	4 x M5
Connection type:	4 screw connections (M3.5)
Conductor cross-section:	single core 1x0.5-1.5mm ² / litz wire with connector sleeve 0.5-1.5mm ²
Cable entry size:	1 x M20x1.5
Weight:	approx. 0,23 kg

Electrical features

Rated insulation voltage:	U _i = 400 V AC
Conventional thermal current:	I _{the} = 10 A
Max. inrush current:	according to IEC 60947-5-1; AC 15, A300
Utilization categorie:	AC 15, A300, U _e /I _e 240V/3A
Standards:	according to EN 60947-1; EN 60947-5-1
Protection class (IP-Code):	IP65 according to EN 60529, DIN VDE 0470 T1
CSA:	10A 300V AC, A300 (same polarity)
Short-circuit protection:	Fuse 10A gL/gG, IEC/EN 60947-5-1, appendix K

Remarks

Minimum actuating radius R_{min} = 400mm; velocity for actuating V_{max} = 0.5m/s.
Do not use this safety switch as a mechanical end stop.
Eight different actuating directions achievable by rotating the actuating head in steps 45°.
Changing between horizontal and vertical actuating direction by setting the actuating head in the requested direction.
The rated protection class (IP-Code) is valid only at closed cover and when using an at least equivalent cable gland.

18.03.2003